

N. EDGE OF BIKE PATH

Location	Station	Offset	Theoretical Grade Elevations
End of W. Appr. Pav't.	134+73.103	-50.25	896.642
A	134+83.103	-50.25	896.703
B	134+93.103	-50.25	896.758
Bk. W. Abut.	135+03.103	-50.25	896.808

N. EDGE OF INSIDE LANE

Location	Station	Offset	Theoretical Grade Elevations
End of W. Appr. Pav't.	134+94.032	-14.00	897.488
A	135+04.032	-14.00	897.537
B	135+14.032	-14.00	897.579
Bk. W. Abut.	135+24.032	-14.00	897.616

☉ RDWAY & P.G.L.

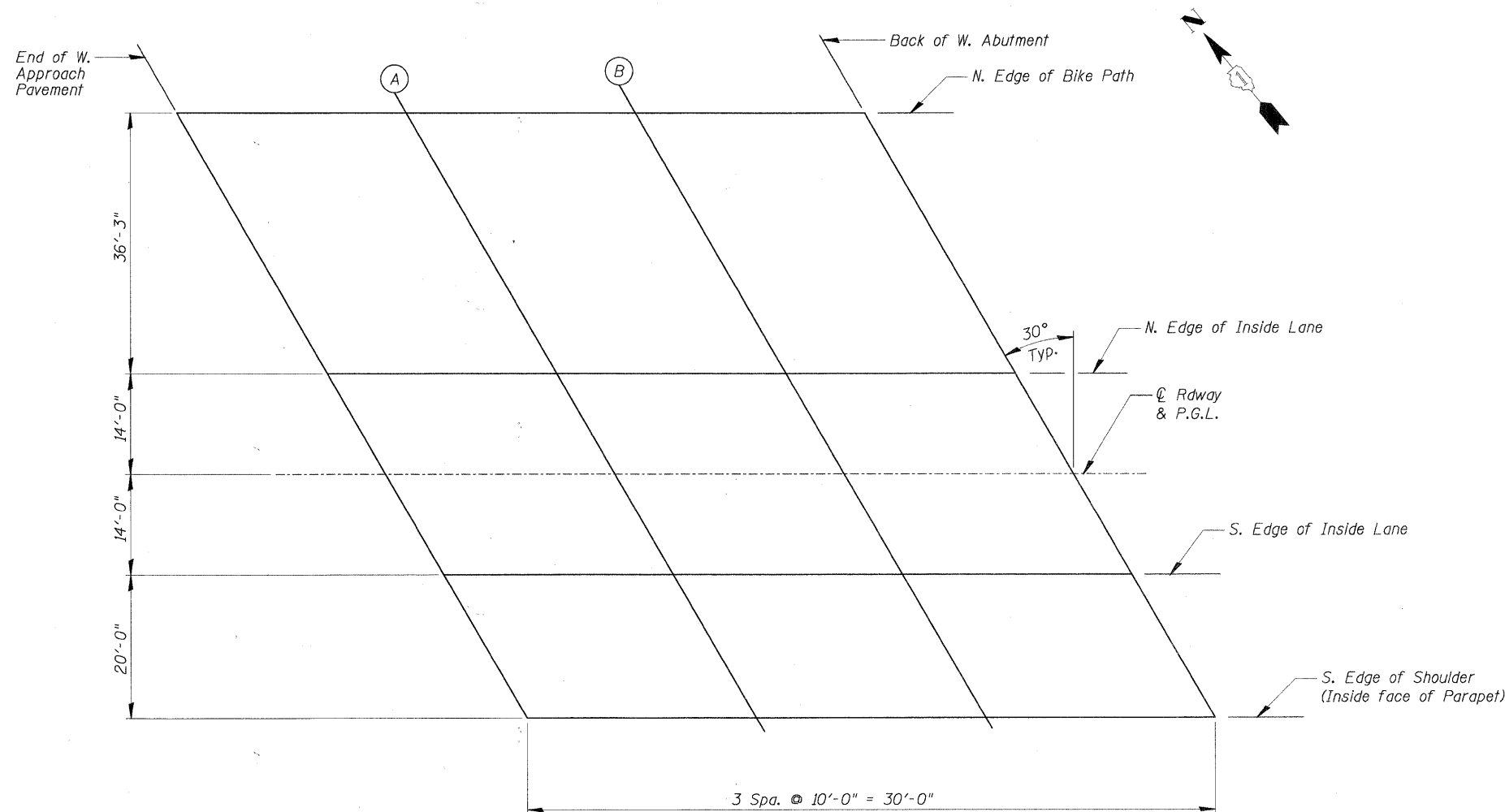
Location	Station	Offset	Theoretical Grade Elevations
End of W. Appr. Pav't.	135+02.115	0.00	897.738
A	135+12.115	0.00	897.782
B	135+22.115	0.00	897.819
Bk. W. Abut.	135+32.115	0.00	897.851

S. EDGE OF INSIDE LANE

Location	Station	Offset	Theoretical Grade Elevations
End of W. Appr. Pav't.	135+10.198	14.00	897.564
A	135+20.198	14.00	897.603
B	135+30.198	14.00	897.636
Bk. W. Abut.	135+40.198	14.00	897.662

S. EDGE OF SHOULDER (INSIDE FACE OF PARAPET)

Location	Station	Offset	Theoretical Grade Elevations
End of W. Appr. Pav't.	135+21.745	34.00	897.208
A	135+31.745	34.00	897.240
B	135+41.745	34.00	897.266
Bk. W. Abut.	135+51.745	34.00	897.286



PLAN

CHRISTOPHER B. BURKE ENGINEERING, LTD.
8575 W. Higgins Road, Suite 800
Rosemont, Illinois 60018
(847) 823-0500



F.A.S. 0130 - BIG TIMBER ROAD
OVER TYLER AND PINGREE CREEK
SECTION 01-00266-00-BR
KANE COUNTY, ILLINOIS
STA. 135+80.00
STRUCTURE NO. 045-3323

FILE NAME =	USER NAME = BLUKE	DESIGNED - MM	REVISED -
N:\kanecounty\04198\STRUCT_2\04198-56.SHT		DRAWN - PDR	REVISED -
	PLOT SCALE = 1"	CHECKED - MM	REVISED -
	PLOT DATE = 2/7/2011	DATE -	REVISED -

**STATE OF ILLINOIS
DEPARTMENT OF TRANSPORTATION**

TOP OF WEST APPROACH SLAB ELEVATIONS

SHEET NO. S-6 OF S-21

F.A.S. RTE.	SECTION	COUNTY	TOTAL SHEETS	SHEET NO.
0130	01-00266-00-BR	KANE	70	43
FED. ROAD DIST. NO. 1 [ILLINOIS] FED. AID PROJECT BRM-800310431			CONTRACT NO. 63196	