

**N. EDGE OF BIKE PATH**

Location	Station	Offset	Theoretical Grade Elevations
Bk. E. Abut.	135+98.870	-50.25	896.974
A	136+08.870	-50.25	896.960
B	136+18.870	-50.25	896.940
End of E. Appr. Pav't.	136+28.870	-50.25	896.913

**N. EDGE OF INSIDE LANE**

Location	Station	Offset	Theoretical Grade Elevations
Bk. E. Abut.	136+19.799	-14.00	897.662
A	136+29.799	-14.00	897.636
B	136+39.799	-14.00	897.603
End of E. Appr. Pav't.	136+49.799	-14.00	897.564

**☉ RDWAY & P.G.L.**

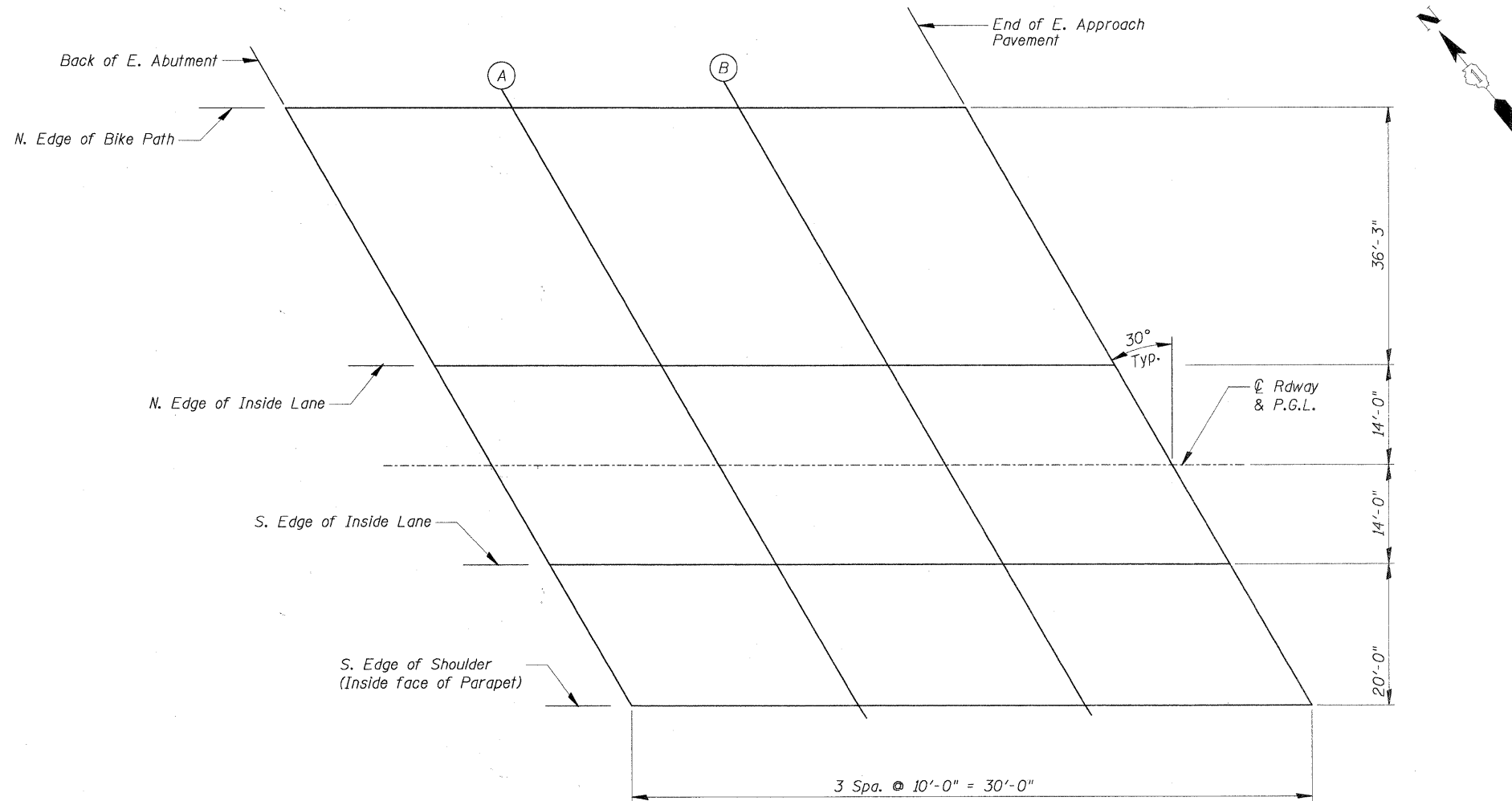
Location	Station	Offset	Theoretical Grade Elevations
Bk. E. Abut.	136+27.882	0.00	897.851
A	136+37.882	0.00	897.819
B	136+47.882	0.00	897.782
End of E. Appr. Pav't.	136+57.882	0.00	897.738

**S. EDGE OF INSIDE LANE**

Location	Station	Offset	Theoretical Grade Elevations
Bk. E. Abut.	136+35.965	14.00	897.616
A	136+45.965	14.00	897.579
B	136+55.965	14.00	897.537
End of E. Appr. Pav't.	136+65.965	14.00	897.488

**S. EDGE OF SHOULDER (INSIDE FACE OF PARAPET)**

Location	Station	Offset	Theoretical Grade Elevations
Bk. E. Abut.	136+47.512	34.00	897.173
A	136+57.512	34.00	897.130
B	136+67.512	34.00	897.080
End of E. Appr. Pav't.	136+77.512	34.00	897.025



**PLAN**

CHRISTOPHER B. BURKE ENGINEERING, LTD.  
9575 W. Higgins Road, Suite 800  
Rosemont, Illinois 60018  
(847) 823-0500



F.A.S. 0130 -BIG TIMBER ROAD  
OVER TYLER AND PINGREE CREEK  
SECTION 01-00266-00-BR  
KANE COUNTY, ILLINOIS  
STA. 135+80.00  
STRUCTURE NO. 045-3323

FILE NAME =	USER NAME = BLUKE	DESIGNED - MM	REVISED -	<b>STATE OF ILLINOIS DEPARTMENT OF TRANSPORTATION</b>	<b>TOP OF EAST APPROACH SLAB ELEVATIONS</b>	F.A.S. RTE.	SECTION	COUNTY	TOTAL SHEETS	SHEET NO.
N:\kanecounty\24198\STRUCT_2\04198-S7.SHT		DRAWN - PDR	REVISED -			0130	01-00266-00-BR	KANE	70	44
PLOT SCALE = 1"		CHECKED - MM	REVISED -			CONTRACT NO. 63196				
PLOT DATE = 2/7/2011		DATE -	REVISED -			FED. ROAD DIST. NO. 1   ILLINOIS FED. AID PROJECT BRM-8003043				
SHEET NO. S-7 OF S-21										