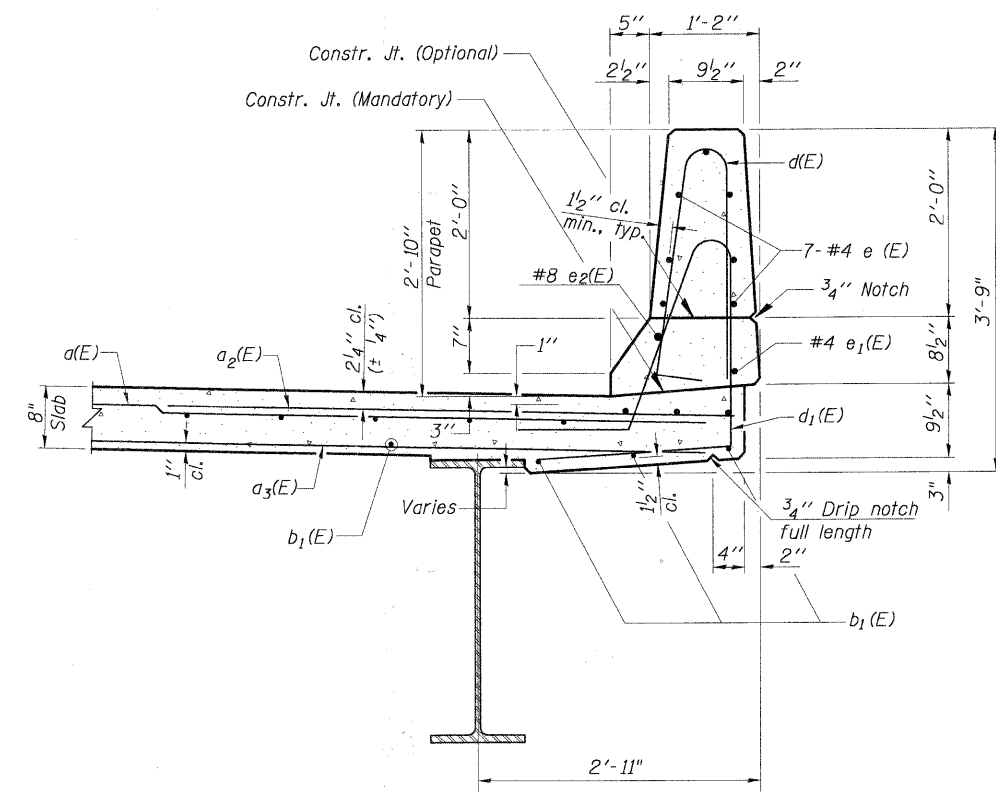


Reinforcement bars designated (E) shall be epoxy coated.  
Reinforcement bars shall not pass thru aluminum sheets and cork joint filler.

Core and set #5 d<sub>2</sub>(E) bar according to Article 509.06 of the Standard Specifications. Cored holes shall be roughened or scored per manufacturer's recommendations. Maximum depth of hole shall not exceed 6". Cost of coring and setting of bars included in Cost of Reinforcement Bars, Epoxy Coated

SECTION NORTH PARAPET AND SIDEWALK



SECTION THRU PARAPET

CHRISTOPHER B. BURKE ENGINEERING, LTD.  
9575 W. Higgins Road, Suite 600  
Rosemont, Illinois 60018  
(847) 823-0500

F.A.S. 0130 -BIG TIMBER ROAD  
OVER TYLER AND PINGREE CREEK  
SECTION 01-00266-00-BR  
KANE COUNTY, ILLINOIS  
STA. 135+80.00  
STRUCTURE NO. 045-3323

FILE NAME =	USER NAME = BLUKE	DESIGNED - MM	REVISED -	<b>STATE OF ILLINOIS DEPARTMENT OF TRANSPORTATION</b>	<b>PARAPET DETAILS</b>	F.A.S. RTE.	SECTION	COUNTY	TOTAL SHEETS	SHEET NO.
N:\kanecounty\04198\STRUCT.2\04198-S9.SHT		DRAWN - PDR	REVISED -			0130	01-00266-00-BR	KANE	70	46
PLOT SCALE = 1"		CHECKED - MM	REVISED -			CONTRACT NO. 63196				
PLOT DATE = 2/7/2011		DATE -	REVISED -			FED. ROAD DIST. NO. 1   ILLINOIS FED. AID PROJECT BRM-8003043				
SHEET NO. S-9 OF S-21										