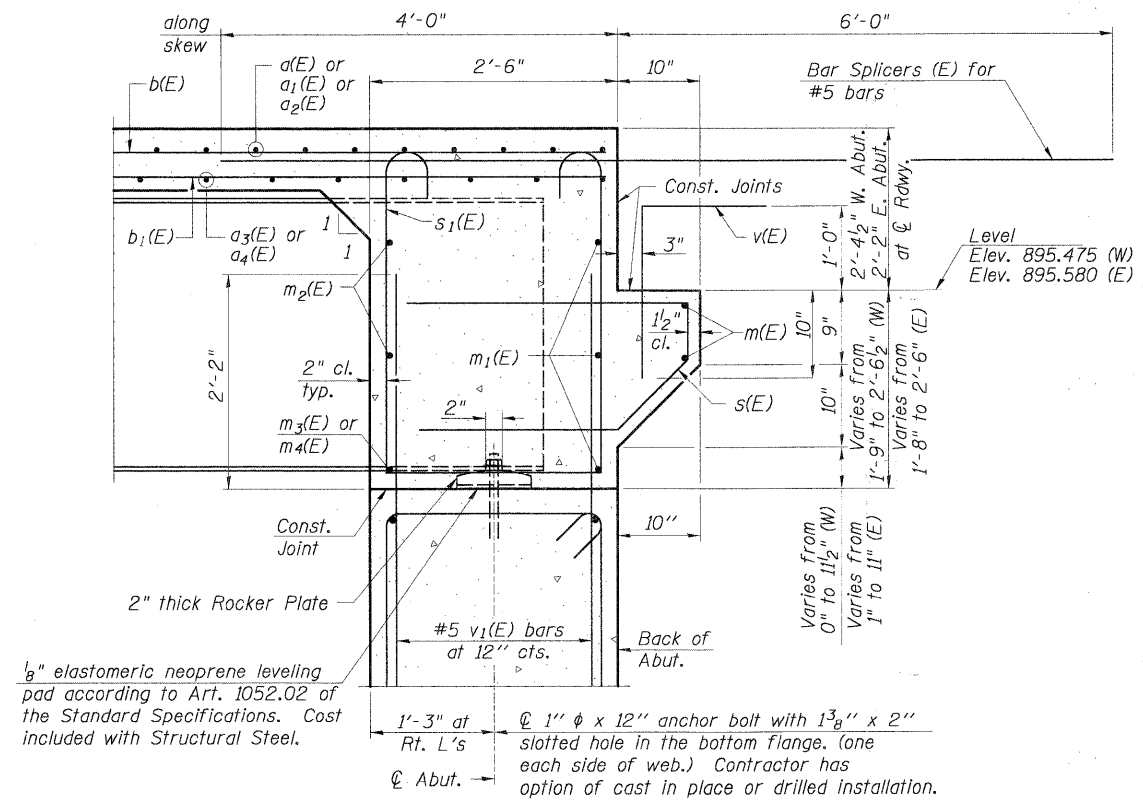


DIAPHRAGM ELEVATION AT ABUTMENT

Notes:
 Reinforcement bars in diaphragm are billed with superstructure on sheet S-10.
 Concrete in diaphragm is included with Concrete Superstructure on sheet S-10.
 For details of bars s(E) & s1(E) see sheet S-10.
 The s(E) and s1(E) bars shall be placed parallel to the beams. Spacing for these bars shall be at right angles to the beams.

MIN. BAR LAP
 #6 bar = 3'-4"



SECTION A-A

Dimensions at right angles to abutment, except as shown.

CHRISTOPHER B. BURKE ENGINEERING, LTD.
 9575 W. Higgins Road, Suite 600
 Rosemont, Illinois 60018
 (847) 823-0500



F.A.S. 0130 -BIG TIMBER ROAD
 OVER TYLER AND PINGREE CREEK
 SECTION 01-00266-00-BR
 KANE COUNTY, ILLINOIS
 STA. 135+80.00
 STRUCTURE NO. 045-3323

| | | | | | | | | | | |
|--|-------------------|---------------|-----------|---|-------------------------------|---|----------------|--------|--------------|-----------|
| FILE NAME = | USER NAME = BLUKE | DESIGNED - MM | REVISED - | STATE OF ILLINOIS DEPARTMENT OF TRANSPORTATION | SUPERSTRUCTURE DETAILS | F.A.S. RTE. | SECTION | COUNTY | TOTAL SHEETS | SHEET NO. |
| N:\kanecounty\B4198\STRUCT_2\B4198-S11.SHT | | DRAWN - PDR | REVISED - | | | 0130 | 01-00266-00-BR | KANE | 70 | 48 |
| PLOT SCALE = 1" | | CHECKED - MM | REVISED - | | | CONTRACT NO. 63196 | | | | |
| PLOT DATE = 2/7/2011 | | DATE - | REVISED - | | | FED. ROAD DIST. NO. 1 ILLINOIS FED. AID PROJECT BRM-8003043 | | | | |
| SHEET NO. S-11 OF S-21 | | | | | | | | | | |