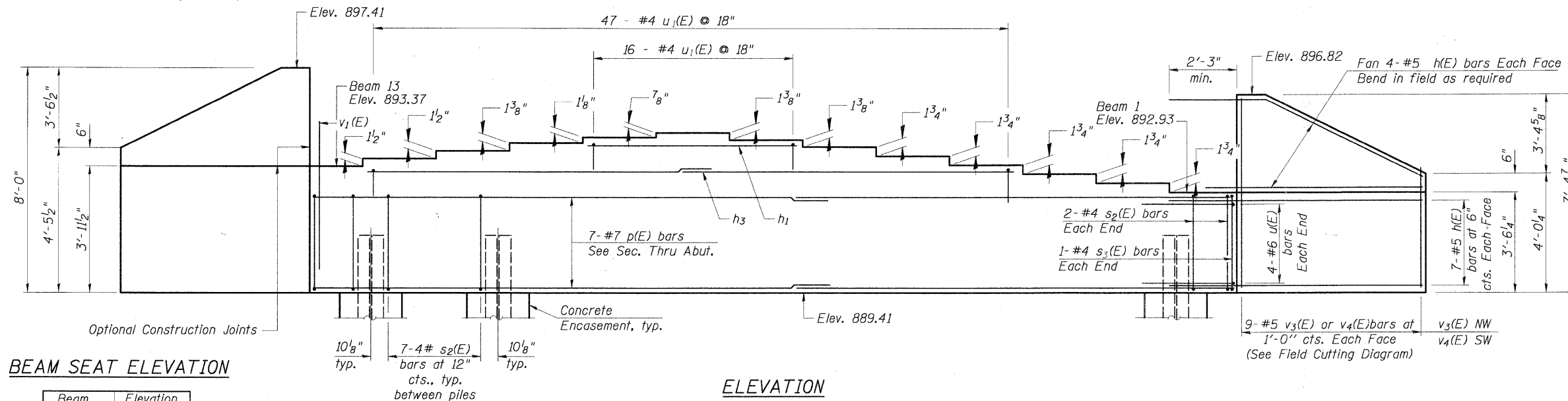
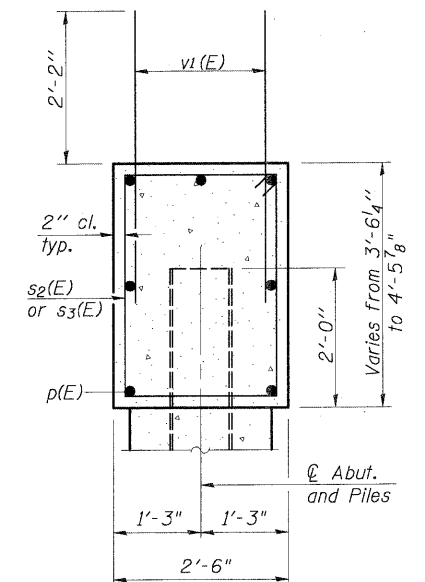


Note: Four steps monolithically with cap.



BEAM SEAT ELEVATION

ELEVATION



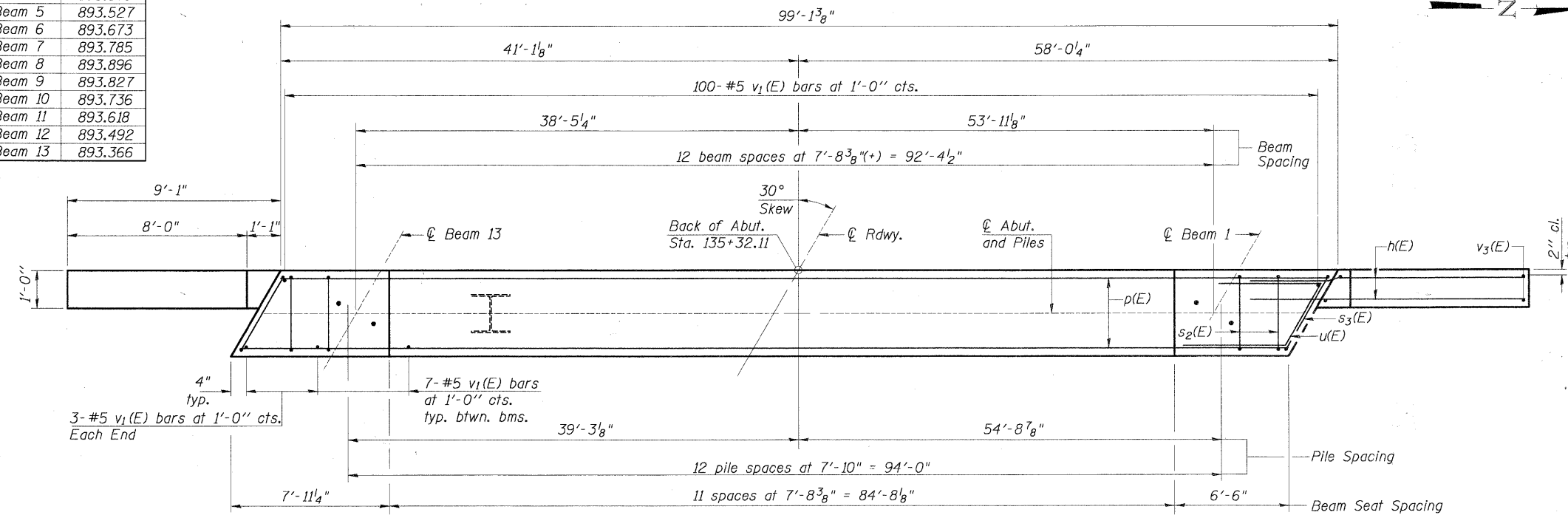
SEC. THRU ABUT.

BILL OF MATERIAL

Bar	No.	Size	Length	Shape
h(E)	44	#5	11'-4"	—
h ₁ (E)	2	#5	22'-9"	—
h ₃ (E)	4	#5	35'-6"	—
p(E)	21	#7	35'-7"	—
s ₂ (E)	88	#4	11'-5"	□
s ₃ (E)	2	#4	12'-1"	□
u(E)	8	#6	7'-11"	—
u ₁ (E)	63	#4	3'-8"	—
v ₁ (E)	190	#5	4'-4"	—
v ₃ (E)	9	#5	10'-9"	—
v ₄ (E)	9	#5	11'-9"	—
Concrete Structures	Cu. Yd.	41.50		
Reinforcement Bars, Epoxy Coated	Pound	4250		
Structure Excavation	Cu. Yd.	110		
Furnishing Steel Piles HP12x53	Foot	792		
Driving Piles	Foot	792		
Test Pile HP12x53	Each	1		
Concrete Encasement	Cu. Yd.	4.5		
Anchor Bolts, 1"	Each	26		

NOTE: Welded Wire Fabric Around Pile is Included In Cost of "Concrete Encasement".

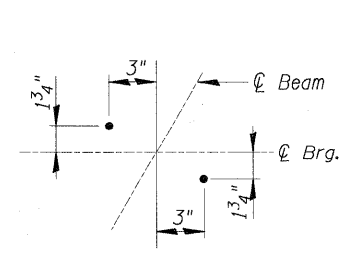
Beam	Elevation
Beam 1	892.932
Beam 2	893.082
Beam 3	893.231
Beam 4	893.379
Beam 5	893.527
Beam 6	893.673
Beam 7	893.785
Beam 8	893.896
Beam 9	893.827
Beam 10	893.736
Beam 11	893.618
Beam 12	893.492
Beam 13	893.366



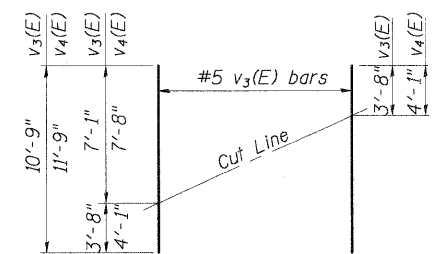
PLAN

PILE DATA

Type: Steel HP 12x53
 Nominal Required Bearing: 360 kips
 Factored Resistance Available: 120 kips
 Est. Length: 66 ft.
 No. Production Piles: 12
 No. Test Piles: 1

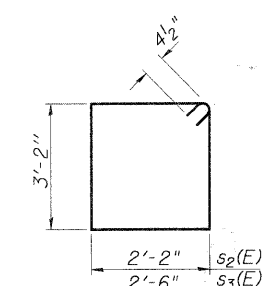


ANCHOR BOLT LAYOUT

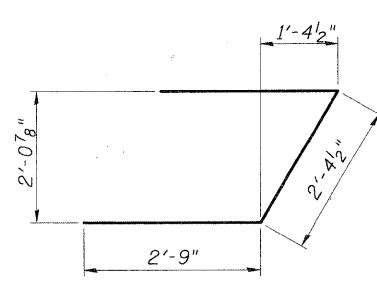


FIELD CUTTING DIAGRAM

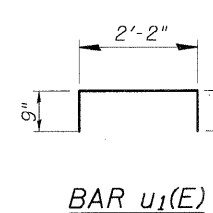
Order v₃(E) & v₄(E) full length. Cut as shown and use remainder of bars in opposite face.



BAR s₂(E) & s₃(E)



BAR u(E)



BAR u₁(E)

F.A.S. 0130 - BIG TIMBER ROAD OVER TYLER AND PINGREE CREEK SECTION 01-00266-00-BR KANE COUNTY, ILLINOIS STA. 135+80.00 STRUCTURE NO. 045-3323

CHRISTOPHER B. BURKE ENGINEERING, LTD.
 5675 W. Higgins Road, Suite 600
 Rosemont, Illinois 60018
 (847) 923-0500

FILE NAME =	USER NAME =	DESIGNED -	REVISED -
N:\kanecounty\B4198\STRUCT.2\B4198-S15.SHT	BLUKE	MM	-
		PDR	-
		MM	-
			-

STATE OF ILLINOIS
 DEPARTMENT OF TRANSPORTATION

WEST ABUTMENT DETAILS

SHEET NO. 5-15 OF 5-21

F.A.S. RTE.	SECTION	COUNTY	TOTAL SHEETS	SHEET NO.
0130	01-00266-00-BR	KANE	70	52
CONTRACT NO. 63196				
FED. ROAD DIST. NO. 1 [ILLINOIS] FED. AID PROJECT BRM-80031043				