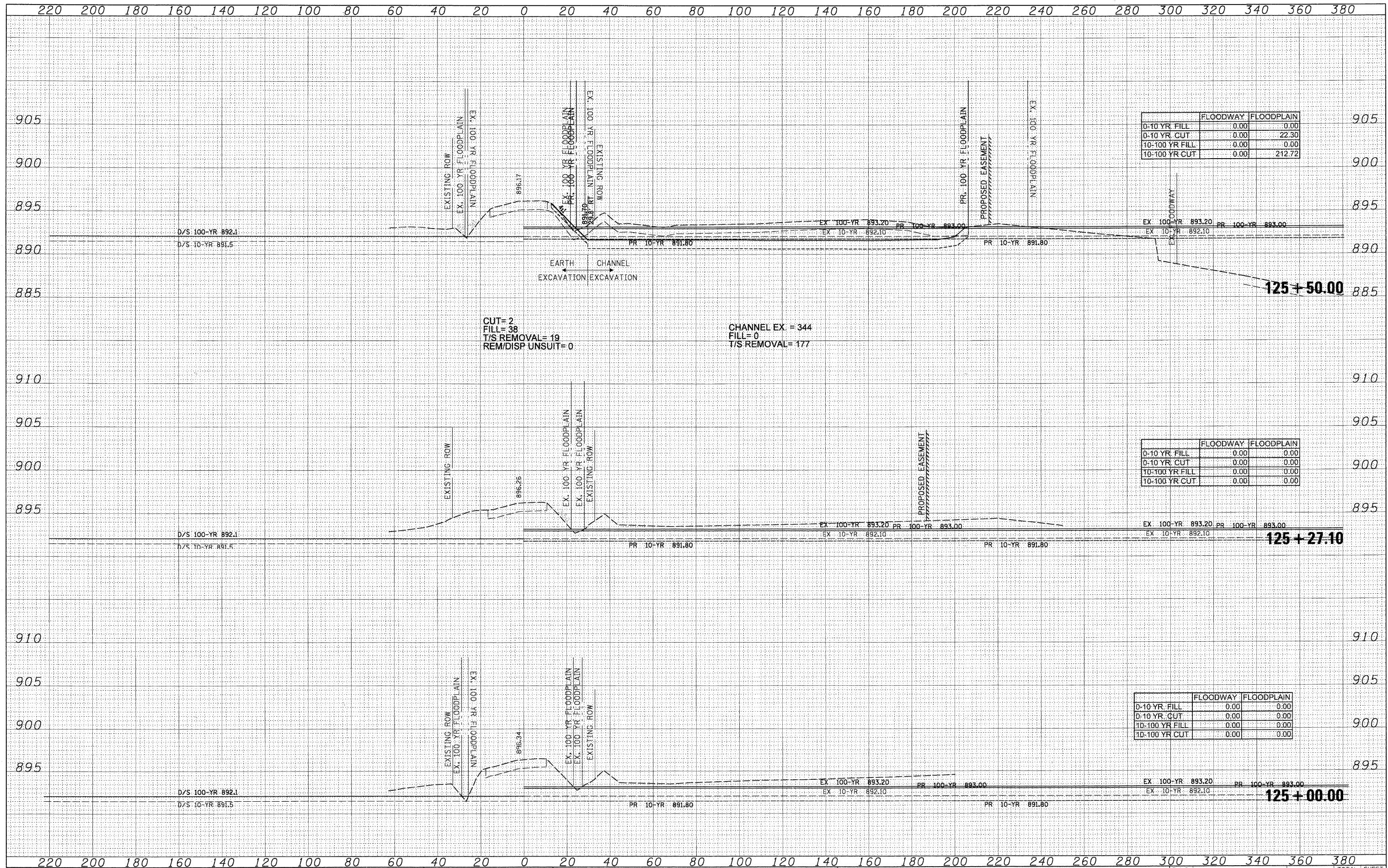


DATE	
BY	
SURVEYED	
PLOTTED	
TEMPLATE	
NOTE BOOK	
AREAS CHECKED	
NO.	

DATE	
BY	
SURVEYED	
PLOTTED	
TEMPLATE	
NOTE BOOK	
AREAS CHECKED	
NO.	

CHRISTOPHER B. BURKE ENGINEERING, LTD.  
 5075 W. Maple Road, Suite 200  
 Normal, Illinois 61890  
 (618) 522-9500



FILE NAME =  
 N:\kanecounty\04198\Civil\2\XS04198\_2\_BIGTIM\_S1.dwg

USER NAME = BLUKE  
 DESIGNED - BLL  
 DRAWN - PMM  
 CHECKED - JGS  
 DATE -

REVISIONS  
 REVISIONS  
 REVISIONS  
 REVISIONS

DESIGNED - BLL  
 DRAWN - PMM  
 CHECKED - JGS  
 DATE -

STATE OF ILLINOIS  
 DEPARTMENT OF TRANSPORTATION

SCALE: SHEET NO. OF SHEETS STA. 125+00.00 TO STA. 125+50.00

F.A.S. RTE. SECTION COUNTY TOTAL SHEETS SHEET NO.  
 0130 01-00266-00-BR KANE 70 61  
 CONTRACT NO. 63196  
 FED. ROAD DIST. NO. 1 ILLINOIS FED. AID PROJECT BRM-8003(043)