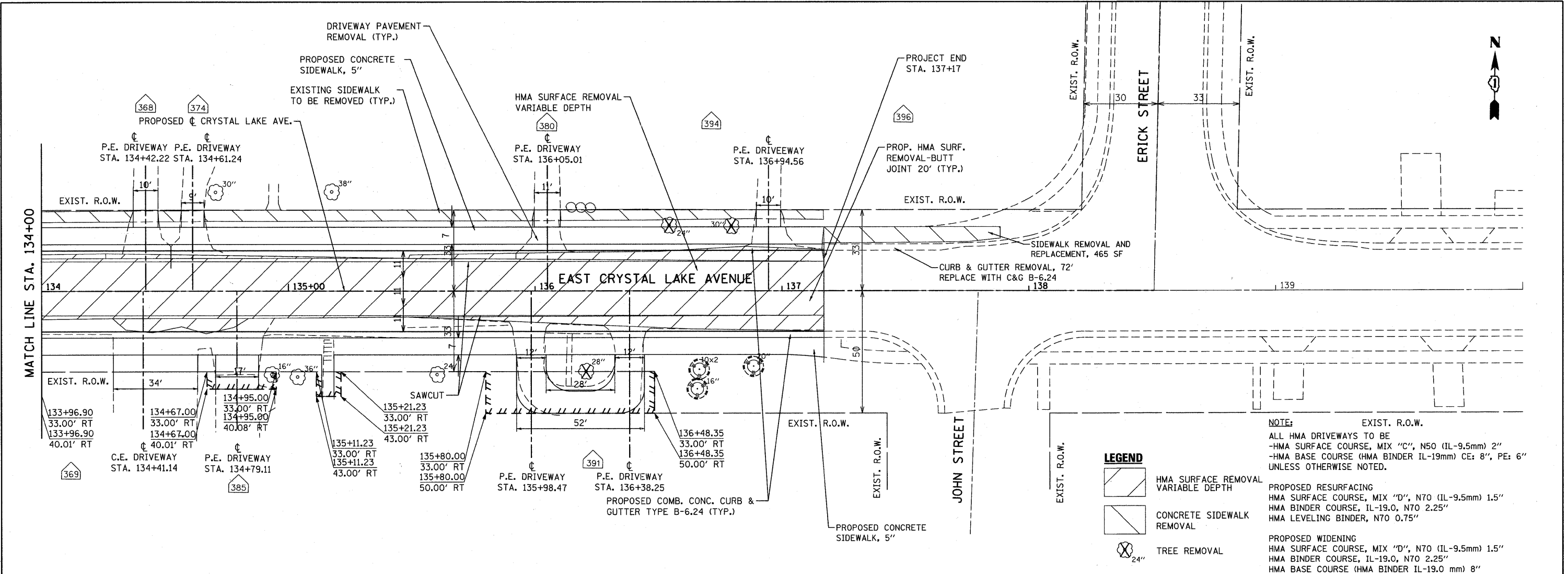


DATE	
BY	
REVISION	
PLANNED	
DESIGNED	
CHECKED	
NOTED	
NO.	

DATE	
BY	
REVISION	
PLANNED	
DESIGNED	
CHECKED	
NOTED	
NO.	



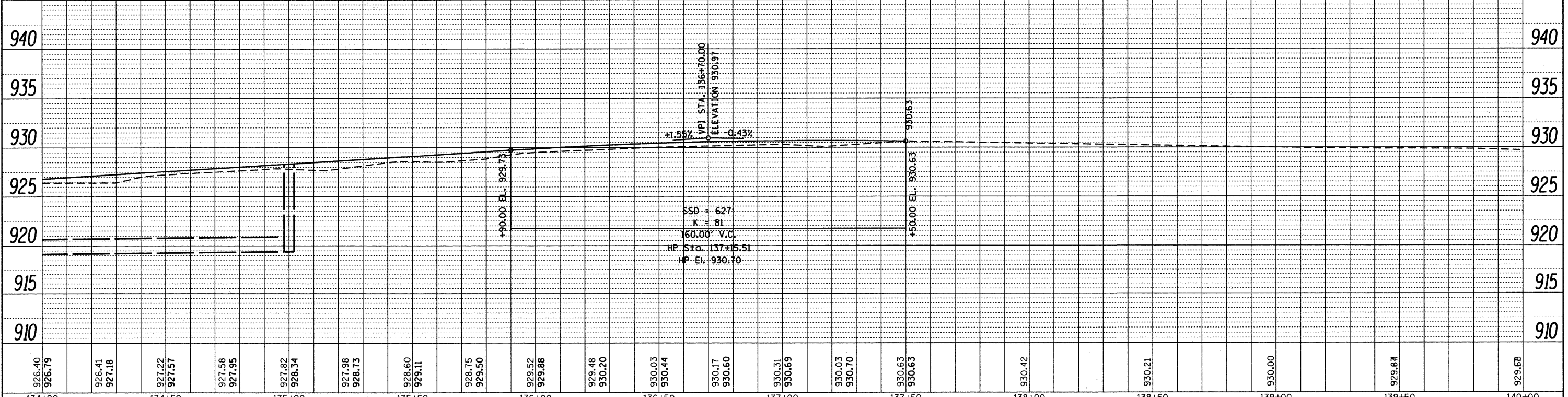
LEGEND

- HMA SURFACE REMOVAL VARIABLE DEPTH
- CONCRETE SIDEWALK REMOVAL
- TREE REMOVAL

NOTE: EXIST. R.O.W.
 ALL HMA DRIVEWAYS TO BE
 -HMA SURFACE COURSE, MIX "C", N50 (IL-9.5mm) 2"
 -HMA BASE COURSE (HMA BINDER IL-19mm) CE: 8", PE: 6"
 UNLESS OTHERWISE NOTED.

PROPOSED RESURFACING
 HMA SURFACE COURSE, MIX "D", N70 (IL-9.5mm) 1.5"
 HMA BINDER COURSE, IL-19.0, N70 2.25"
 HMA LEVELING BINDER, N70 0.75"

PROPOSED WIDENING
 HMA SURFACE COURSE, MIX "D", N70 (IL-9.5mm) 1.5"
 HMA BINDER COURSE, IL-19.0, N70 2.25"
 HMA BASE COURSE (HMA BINDER IL-19.0 mm) 8"



926.40 926.79	926.41 927.18	927.22 927.57	927.58 927.95	927.82 928.34	927.98 928.73	928.60 929.11	928.75 929.50	929.52 929.88	929.48 930.20	930.03 930.44	930.17 930.60	930.31 930.69	930.03 930.70	930.63 930.63	930.42	930.21	930.00	929.67	929.68
134+00	134+50	135+00	135+50	136+00	136+50	137+00	137+50	138+00	138+50	139+00	139+50	140+00							

FILE NAME =
 F:\1789-006 East Crystal Lake Ave SEGMENT

USER NAME = gallwanger
 X:\CADD_Sheets\0163524-ant-plnprf3.dgn
 PLOT SCALE = 20.0000' / IN.
 PLOT DATE = 2/7/2011

DESIGNED - GJE
 DRAWN - GJE
 CHECKED - JP
 DATE - 02/7/2011

REVISED -
 REVISED -
 REVISED -
 REVISED -

**STATE OF ILLINOIS
 DEPARTMENT OF TRANSPORTATION**

**EAST CRYSTAL LAKE AVENUE
 PLAN AND PROFILE**
 HORIZ. 1"=20'
 SCALE: VERT. 1"=5' SHEET NO. 12 OF 64 SHEETS STA. 134+00 TO STA. 135+50

F.A.U. RTE.	SECTION	COUNTY	TOTAL SHEETS	SHEET NO.
116	06-00104-01-WR	McHENRY	64	12
CONTRACT NO. 63524			ILLINOIS FED. AID PROJECT	