

F.A.S. RTE.	SECTION	COUNTY	TOTAL SHEETS	SHEET NO.
0028	06-00320-01-BR	MCHENRY	70	1
CONTRACT NO. 63535				
FED. ROAD DIST. NO.	ILLINOIS	FED AID PROJECT BRS-0028(107)		

FOR INDEX OF SHEETS, SEE SHEET NO. 2

FOR INDEX OF HIGHWAY STANDARDS, SEE SHEET NO. 2

PROJECT LOCATED IN CHEMUNG TOWNSHIP

STATE OF ILLINOIS
DEPARTMENT OF TRANSPORTATION
DIVISION OF HIGHWAYS

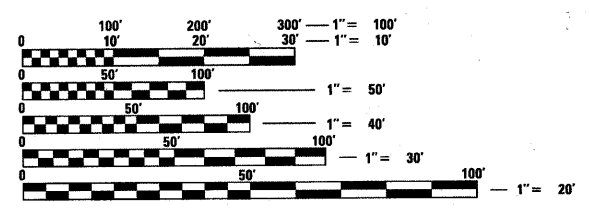
PLANS FOR PROPOSED
FEDERAL AID HIGHWAY

FAS 0028 LAWRENCE ROAD BRIDGE OVER LAWRENCE CREEK
SECTION NO: 06-00320-01-BR
PROJECT NO: BRS-0028(107)
BRIDGE REPLACEMENT, ROADWAY RECONSTRUCTION AND RESURFACING
MCHENRY COUNTY
JOB NO: C-91-139-11



TRAFFIC DATA
LAWRENCE ROAD
POSTED SPEED LIMIT = 55 MPH
DESIGN SPEED LIMIT = 60 MPH
2009 ADT = 390 VPD
2030 ADT = 490 VPD

DESIGN DESIGNATION
LAWRENCE ROAD: 222(21) COLLECTOR (0.10) (FD-10)



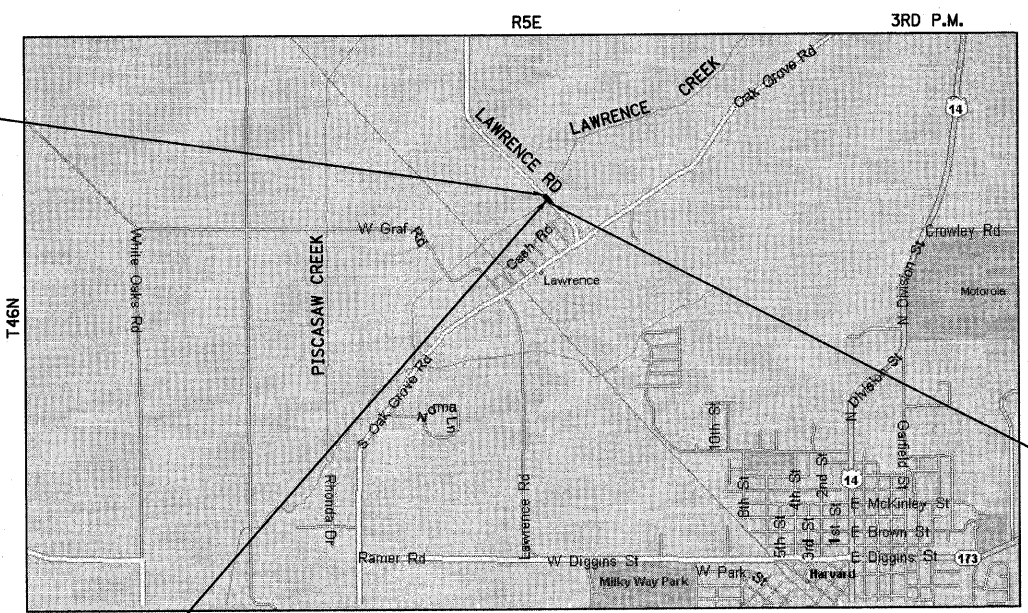
FULL SIZE PLANS HAVE BEEN PREPARED USING STANDARD ENGINEERING SCALES. REDUCED SIZED PLANS WILL NOT CONFORM TO STANDARD SCALES. IN MAKING MEASUREMENTS ON REDUCED PLANS, THE ABOVE SCALES MAY BE USED.

J.U.L.I.E. DESIGN STAGE REQUEST
DIG NO. A1761045



CONTACT JULIE AT 811 OR 800-892-0123 WITH THE FOLLOWING:
COUNTY = MCHENRY
CITY-TWNSHP. = CHEMUNG
SEC. & 1/4 SEC. NO. = 22
48 HOURS (2 working days) BEFORE YOU DIG

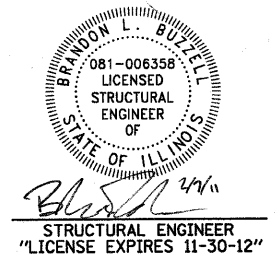
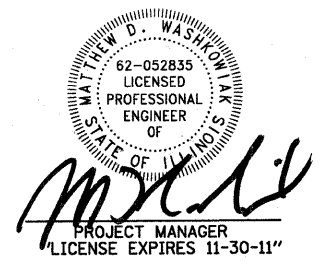
LAWRENCE ROAD
IMPROVEMENT ENDS
STA. 113 + 50



LAWRENCE ROAD
IMPROVEMENT BEGINS
STA. 99 + 00

REPLACEMENT OF
SN: 056-3011 WITH
SN: 056-3181 OVER
LAWRENCE CREEK

LOCATION MAP
(NOT TO SCALE)
CHEMUNG TOWNSHIP
GROSS LENGTH OF IMPROVEMENT = 1,450 LF OR (0.275 MILES)
NET LENGTH OF IMPROVEMENT = 1,450 LF OR (0.275 MILES)



STATE OF ILLINOIS
DEPARTMENT OF TRANSPORTATION
DIVISION OF HIGHWAYS

APPROVED FEBRUARY 4, 2011
Joseph R. Kowalski Jr.
COUNTY OF MCHENRY, COUNTY ENGINEER

PASSED FEBRUARY 24, 2011
Charles Hedberg
DISTRICT 1 ENGINEER OF LOCAL ROADS AND STREETS

RELEASING FOR BID
BASED ON LIMITED
REVIEW FEBRUARY 24, 2011
Diana M. O'Keefe
DEPUTY DIRECTOR OF
HIGHWAYS, REGION 1 ENGINEER

PRINTED BY THE AUTHORITY
OF THE STATE OF ILLINOIS

CONTRACT NO. 63535

COPYRIGHT © 2011 BY BAXTER & WOODMAN, INC.
 LICENSE NO. 1184-00123 EXPIRES 4/30/2011
 5666cd 2/23/2011
 PROGRAM AND OFFICE ENGINEER: CHARLES F. RIDDLE, P.E. (847)705-4406 SCHAUMBURG, IL
 ALL DOCUMENTS ARE THE PROPERTY OF B&W. NO REPRODUCTION OR TRANSMISSION IS PERMITTED WITHOUT THE WRITTEN CONSENT OF B&W.