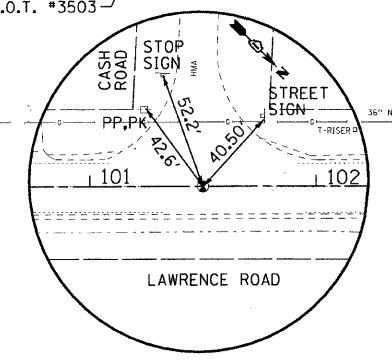
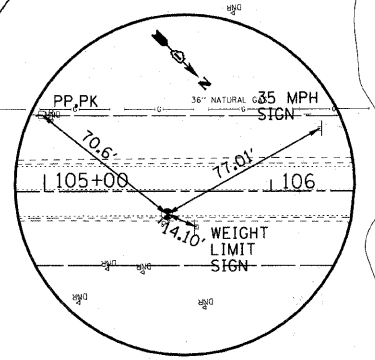


**TIE-POINT**  
 CP #15 STA 101+44.27  
 LAWRENCE ROAD  
 N 2104865.006, E 901686.925

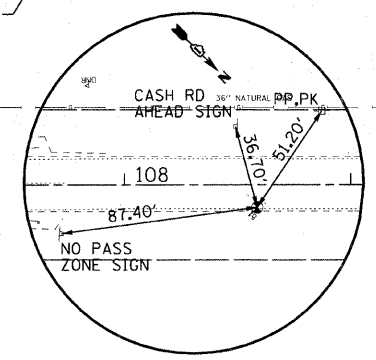


**HORIZONTAL CONTROL**  
 P.O.T. # 3503 STA 101+50  
 LAWRENCE ROAD  
 N 2104868.784, E 901682.605  
 ELEV=904.31

**LAWRENCE ROAD**



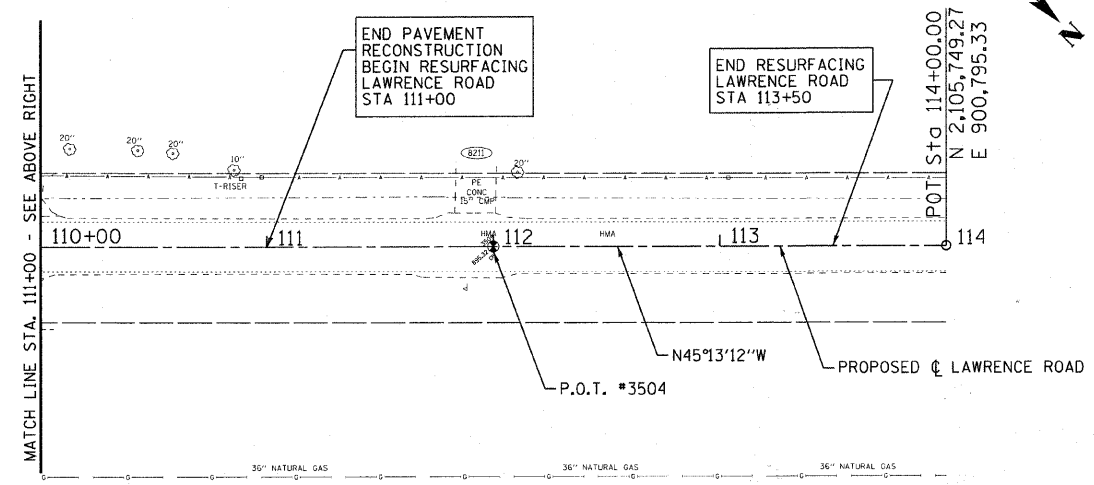
**TIE-POINT**  
 CP #2 STA 105+54.14  
 LAWRENCE ROAD  
 N 2105160.590, E 901402.813



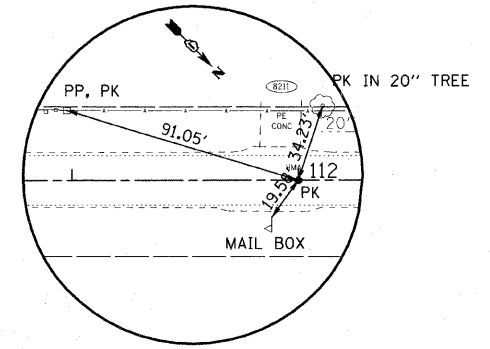
**TIE-POINT**  
 CP #1 STA 108+58.63  
 LAWRENCE ROAD  
 N 2105375.020, E 901186.638

**BENCHMARKS**

- CP #1 - ELEV=894.83 PK NAIL SET IN HMA. (DATUM NAVD 88)
- CP #2 - ELEV=895.02 PK NAIL SET IN HMA. (DATUM NAVD 88)
- CP #15 - ELEV=904.47 PK NAIL SET IN HMA. (DATUM NAVD 88)



**LAWRENCE ROAD**



**HORIZONTAL CONTROL**  
 P.O.T. # 3504 STA 112+00.00  
 LAWRENCE ROAD  
 N 2105608.368, E 900937.289  
 ELEV=895.32

COPYRIGHT © 2010 BY BAXTER & WOODMAN, INC. ALL RIGHTS RESERVED. PROJECT NO. 06-00320-01-BR. DATE: 08/20/10. DRAWN BY: BCD. CHECKED BY: MDW. DATE: 08/20/10. FILE: 070630-Align&Ties.shx.



|                 |                              |
|-----------------|------------------------------|
| DESIGNED - CAC  | REVISED - PER IDOT 10-25-10  |
| DRAWN - BCD     | REVISED -                    |
| CHECKED - MDW   | REVISED -                    |
| DATE - 08/20/10 | FILE - 070630-Align&Ties.shx |

**MCHENRY COUNTY DIVISION OF TRANSPORTATION  
 LAWRENCE ROAD BRIDGE OVER  
 LAWRENCE CREEK**

**ALIGNMENT, TIES AND BENCHMARKS**

SCALE: 1"=40' STA. TO STA.

|   |                        |                |                    |              |
|---|------------------------|----------------|--------------------|--------------|
| F.A.S. RTE. 0028                              | SECTION 06-00320-01-BR | COUNTY MCHENRY | TOTAL SHEETS 70    | SHEET NO. 10 |
| JOB NO. C-91-139-11 ILLINOIS FED. AID PROJECT |                        |                | CONTRACT NO. 63535 |              |
|   |                        |                | BRS-0028(107)      |              |