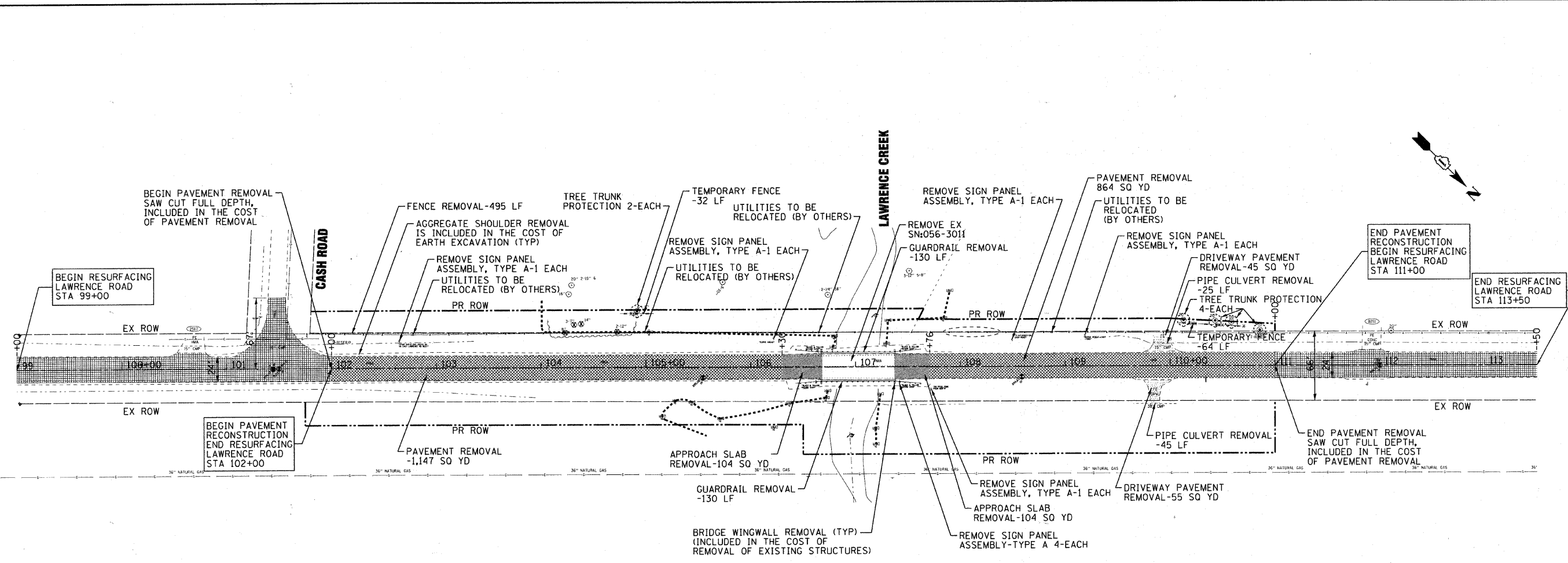


COPYRIGHT © 2010 BY BAXTER & WOODMAN, INC. PROJECT: LAWRENCE ROAD BRIDGE OVER LAWRENCE CREEK. DRAWING NO. 070630-REMOVAL.SHT. DATE: 08/20/10.



## LAWRENCE ROAD

- LEGEND:**
- DRIVEWAY PAVEMENT REMOVAL
  - APPROACH SLAB REMOVAL
  - PAVEMENT REMOVAL
  - TREE REMOVAL
  - WETLAND BOUNDARY
  - HMA SURFACE REMOVAL, 2 1/4"
  - TREE TRUNK PROTECTION
  - - - - - TEMPORARY FENCE



DESIGNED - CAC	REVISED - PER IDOT 10-25-10
DRAWN - BCD	REVISED -
CHECKED - MDW	REVISED -
DATE - 08/20/10	FILE - 070630-REMOVAL.SHT

**MCHENRY COUNTY DIVISION OF TRANSPORTATION**  
**LAWRENCE ROAD BRIDGE OVER**  
**LAWRENCE CREEK**

**EXISTING CONDITIONS AND REMOVAL PLAN**  
 SCALE: 1"=50'  
 STA. 100+00 TO STA. 113+00

F.A.S. RTE.	SECTION	COUNTY	TOTAL SHEETS	SHEET NO.
002B	06-00320-01-BR	MCHENRY	70	11
JOB NO. C-91-139-11				CONTRACT NO. 63535
ILLINOIS FED. AID PROJECT				BRS-0028(107)