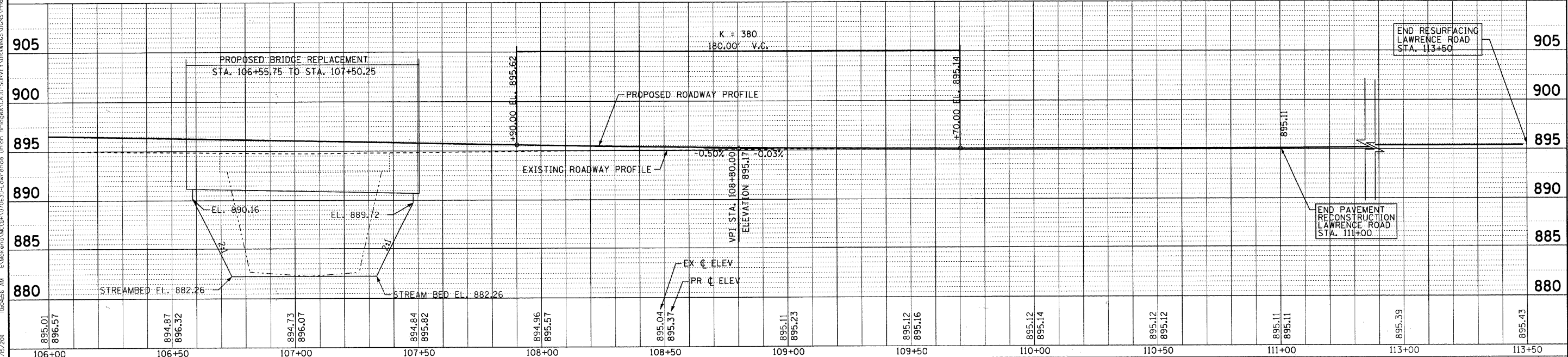
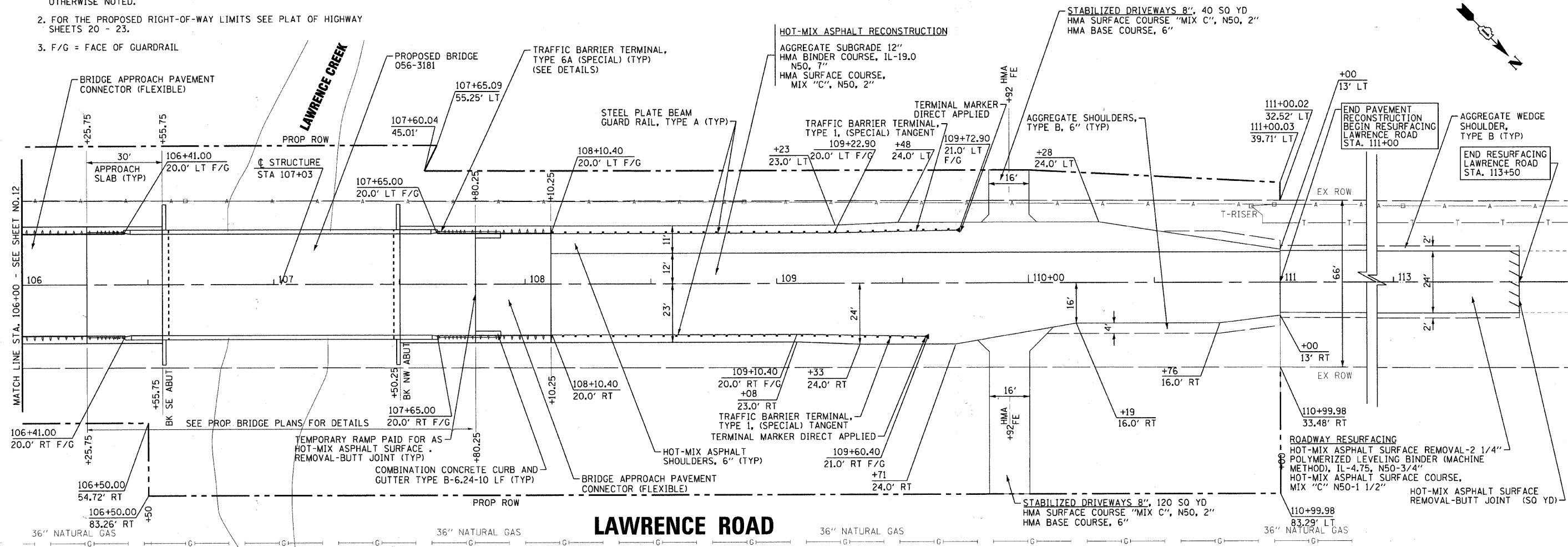


NOTES:

1. ALL DIMENSIONS ARE TO THE EDGE OF PAVEMENT UNLESS OTHERWISE NOTED.
2. FOR THE PROPOSED RIGHT-OF-WAY LIMITS SEE PLAT OF HIGHWAY SHEETS 20 - 23.
3. F/G = FACE OF GUARDRAIL



COPYRIGHT © 2011 BY BAXTER & WOODMAN, INC. PROJECT NO. VDF22434.DWG
 STATE OF ILLINOIS - PROFESSIONAL DESIGN FIRM
 LICENSE NO. 064-00191 - EXPIRES 4/30/2011
 BAXTER & WOODMAN, INC. 1000 N. WOODMAN AVENUE, SUITE 200, DEERFIELD, IL 60015
 2/15/2011



DESIGNED - CAC	REVISED - PER IDOT 10/25/10
DRAWN - BCD	REVISED - PER IDOT 2/14/11
CHECKED - MDW	REVISED
DATE - 08/20/10	FILE -0T0630-PH2-LAWRENCE-PP2.SHT

MCHENRY COUNTY DIVISION OF TRANSPORTATION
LAWRENCE ROAD BRIDGE OVER
LAWRENCE CREEK

PLAN AND PROFILE

SCALE: H: 1"=20' V: 1"=5'

STA. 106+00 TO STA. 113+50

F.A.S. RTE. 0028	SECTION 06-00320-01-BR	COUNTY MCHENRY	TOTAL SHEETS 70	SHEET NO. 13
JOB NO. C-91-139-11 ILLINOIS FED. AID PROJECT			CONTRACT NO. 63535	
			BRS-0028(107)	