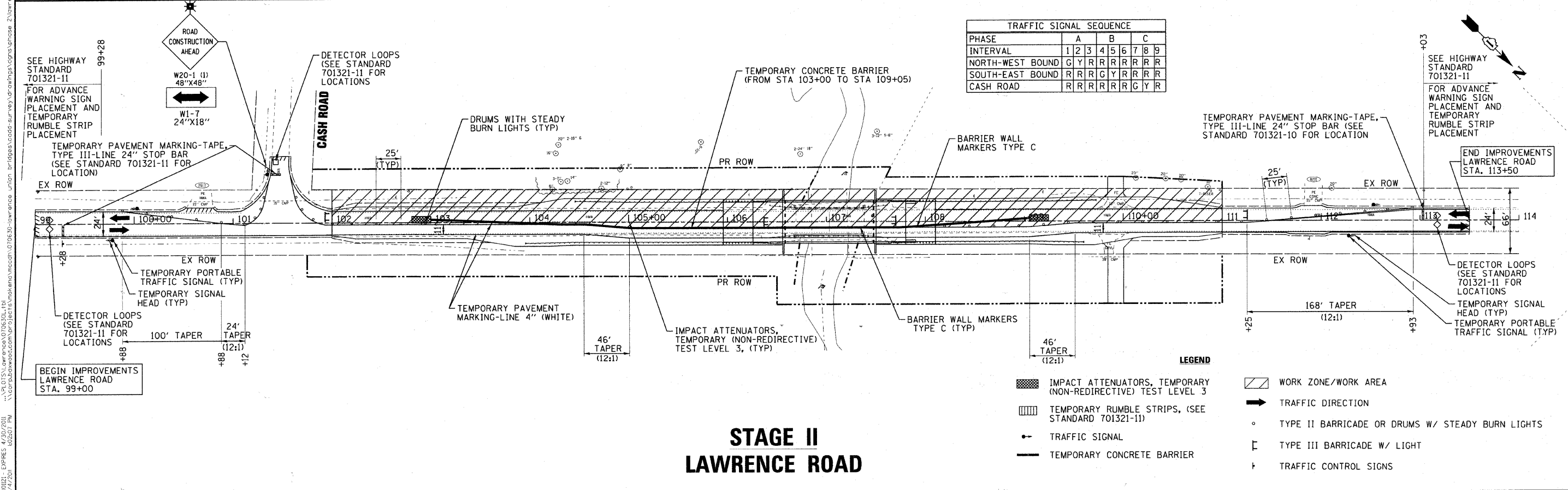


STAGE I AND STAGE II TRAFFIC CONTROL TO BE INSTALLED PER IDOT HIGHWAY STANDARD 701321-11 AND IDOT RECURRING SPECIAL PROVISION "TEMPORARY PORTABLE BRIDGE TRAFFIC SIGNALS".

- NOTES:
1. THE CONTRACTOR IS RESPONSIBLE FOR TIMELY TEMPORARY SIGNAL INSTALLATION AND SERVICE FROM UTILITIES. NO EXTENSION OF THE COMPLETION DATE WILL BE GRANTED DUE TO UTILITY COORDINATION.
  2. THE CONTRACTOR SHALL COORDINATE CONSTRUCTION STAGING WITH THE TEMPORARY TRAFFIC SIGNALS.

TRAFFIC SIGNAL SEQUENCE									
PHASE	A	B	C						
INTERVAL	1	2	3	4	5	6	7	8	9
NORTH-WEST BOUND	G	Y	R	R	R	R	R	R	R
SOUTH-EAST BOUND	R	R	R	G	Y	R	R	R	R
CASH ROAD	R	R	R	R	R	G	Y	R	R

### STAGE I LAWRENCE ROAD



TRAFFIC SIGNAL SEQUENCE									
PHASE	A	B	C						
INTERVAL	1	2	3	4	5	6	7	8	9
NORTH-WEST BOUND	G	Y	R	R	R	R	R	R	R
SOUTH-EAST BOUND	R	R	R	G	Y	R	R	R	R
CASH ROAD	R	R	R	R	R	G	Y	R	R

### STAGE II LAWRENCE ROAD

- LEGEND
- IMPACT ATTENUATORS, TEMPORARY (NON-REDIRECTIVE) TEST LEVEL 3
  - TEMPORARY RUMBLE STRIPS, (SEE STANDARD 701321-11)
  - TRAFFIC SIGNAL
  - TEMPORARY CONCRETE BARRIER
  - WORK ZONE/WORK AREA
  - TRAFFIC DIRECTION
  - TYPE II BARRICADE OR DRUMS W/ STEADY BURN LIGHTS
  - TYPE III BARRICADE W/ LIGHT
  - TRAFFIC CONTROL SIGNS

COPYRIGHT © 2011 BY BAXTER & WOODMAN, INC. ALL RIGHTS RESERVED. PROJECT NO. 06-00320-01-BR. SHEET NO. 15. DATE: 08/20/10.



DESIGNED - CAC	REVISED - PER IDOT 10-25-10
DRAWN - BCD	REVISED -
CHECKED - MDW	REVISED -
DATE - 08/20/10	FILE - 070630-mot-stage 1.shd

MCHENRY COUNTY DIVISION OF TRANSPORTATION  
LAWRENCE ROAD BRIDGE OVER  
LAWRENCE CREEK

SUGGESTED STAGES OF CONSTRUCTION  
AND TRAFFIC CONTROL

SCALE: 1"=50'      STA. 100+00 TO STA. 113+00

F.A.S. RTE.	SECTION	COUNTY	TOTAL SHEETS	SHEET NO.
002B	06-00320-01-BR	MCHENRY	70	15
CONTRACT NO. 63535			JOB NO. C-91-139-11 ILLINOIS FED. AID PROJECT BRS-0028(107)	