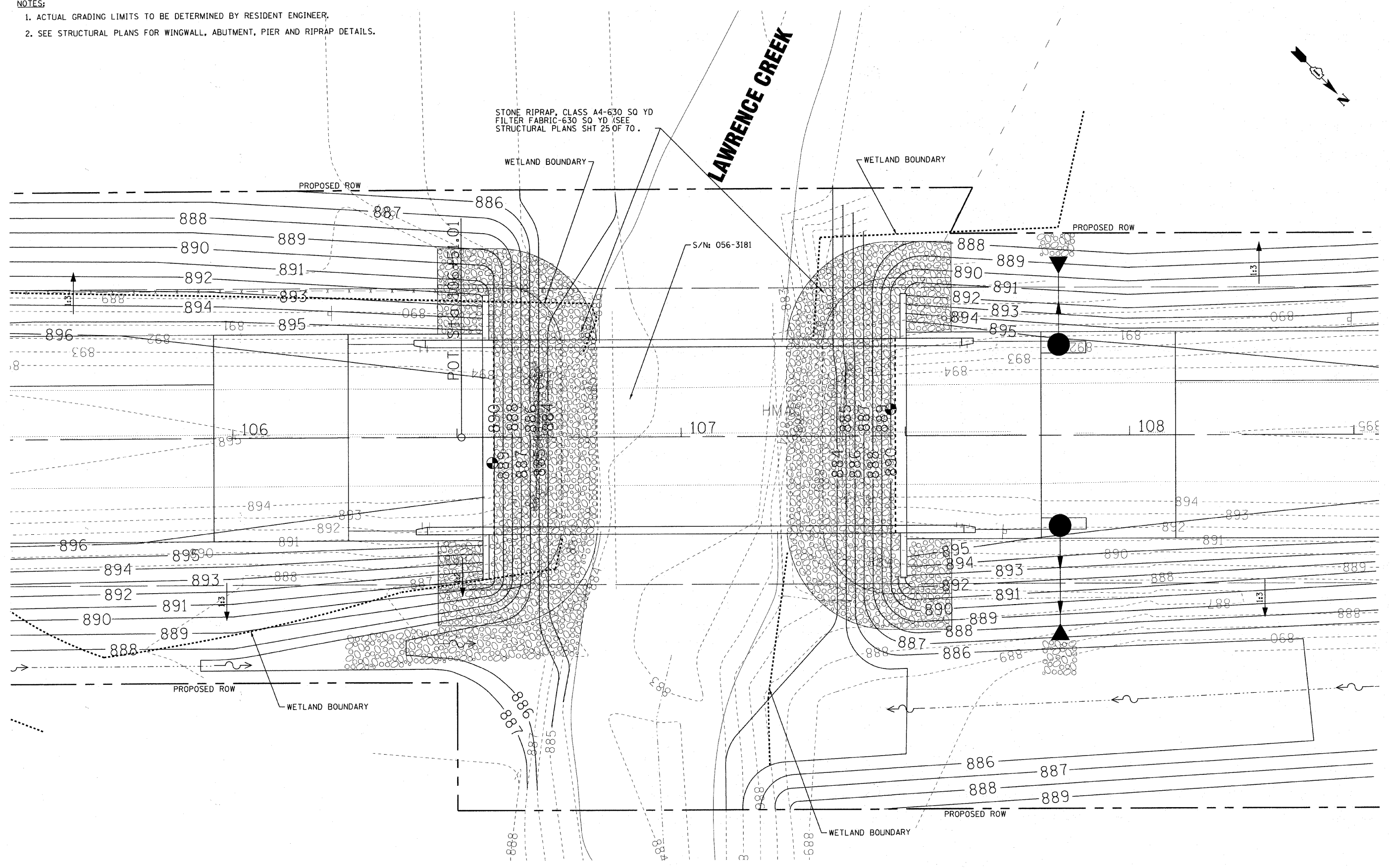


NOTES:

1. ACTUAL GRADING LIMITS TO BE DETERMINED BY RESIDENT ENGINEER.
2. SEE STRUCTURAL PLANS FOR WINGWALL, ABUTMENT, PIER AND RIPRAP DETAILS.



COPYRIGHT © 2010 BY BAXTER & WOODMAN, INC. PROJECT: LAWRENCE ROAD BRIDGE OVER LAWRENCE CREEK, MCHENRY COUNTY, ILLINOIS. SHEET: 070630-GradingDet.sht
 LICENSE NO.: 184-00021 - EXPIRES 4/30/2011
 2/4/2011 10:23:35 PM



DESIGNED - CAC	REVISED - PER IDOT 10-25-10
DRAWN - BCD	REVISED -
CHECKED - MDW	REVISED -
DATE - 08/20/10	FILE - 070630-GradingDet.sht

MCHENRY COUNTY DIVISION OF TRANSPORTATION
LAWRENCE ROAD BRIDGE OVER
LAWRENCE CREEK

GRADING DETAIL AT BRIDGE ABUTMENTS
 SCALE: 1"=10'
 STA. TO STA.

F.A.S. RTE.	SECTION	COUNTY	TOTAL SHEETS	SHEET NO.
0028	06-00320-01-BR	MCHENRY	70	19
JOB NO. C-91-139-11				ILLINOIS FED. AID PROJECT
CONTRACT NO. 63535				BRS-0028(107)