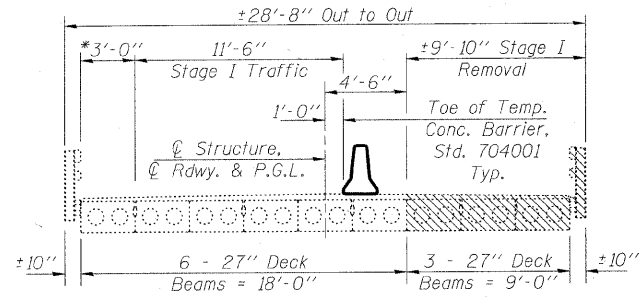


MCHENRY COUNTY  
DIVISION OF TRANSPORTATION

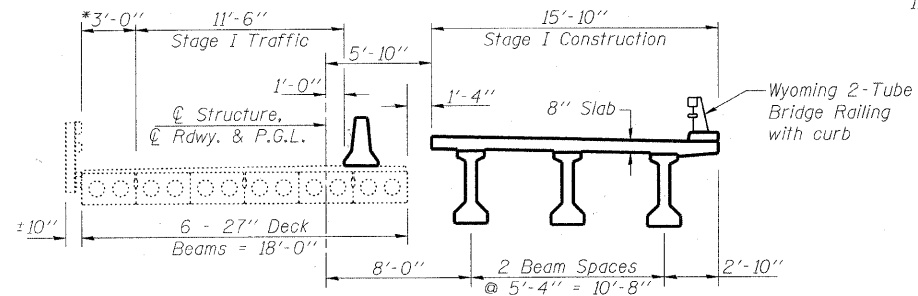
**SEQUENCE OF STAGE REMOVAL  
AND CONSTRUCTION OF  
TEMPORARY SHEET PILING**

1. Install Temporary Sheet Piling for Stage I Construction, up to back of existing abutments.
2. Remove Stage I Superstructure.
3. Sawcut abutments and pier at Stage Removal Line.
4. Remove Stage I portions of piers and abutment pile caps.
5. Install remainder of Temporary Sheet Piling for Stage I.
6. Proceed with Stage I Construction.
7. Adjust Temporary Sheet Piling for Stage II Construction.
8. Remove Stage II Superstructure.
9. Remove Stage II portions of abutments and pier.
10. Proceed with Stage II Construction.
11. Remove Temporary Sheet Piling when Stage II Construction is complete.

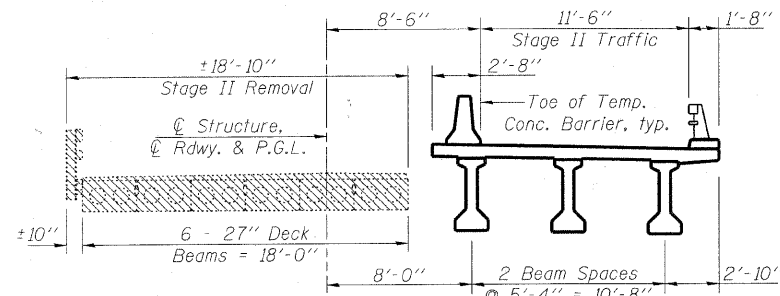


**STAGE I REMOVAL**  
(Looking North)

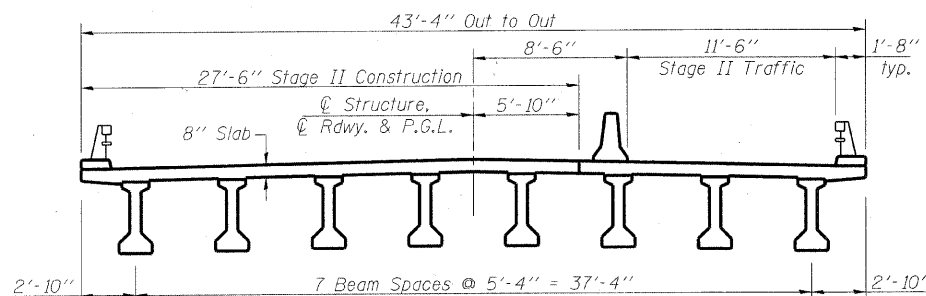
\* Maintain existing Roadway Delineators throughout Stage I Construction to keep traffic off outside beam



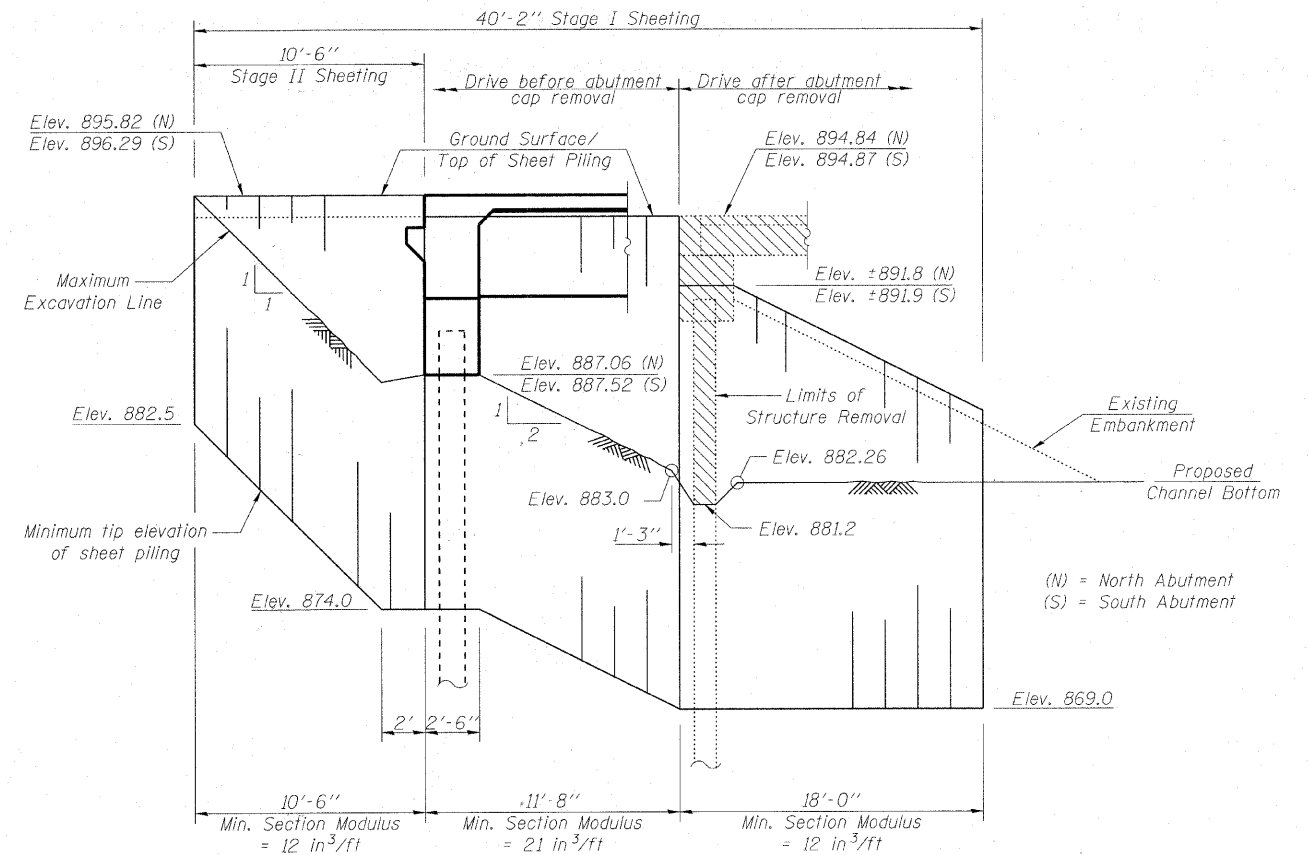
**STAGE I CONSTRUCTION**  
(Looking North)



**STAGE II REMOVAL**  
(Looking North)



**STAGE II CONSTRUCTION**  
(Looking North)



**LEGEND**

Removal of Existing Structures

**BILL OF MATERIAL**

ITEM	UNIT	TOTAL
Temporary Sheet Piling	Sq. Ft.	1624
Removal of Existing Structures	Each	1

**TEMPORARY SHEET PILING**

South Abutment shown, looking West.  
North Abutment similar but opposite hand.

**NOTES**

Removal of the existing Bituminous Wearing Surface and Bridge Railing is included with Removal of Existing Structures.  
See Sheet 4 of 25 for Temporary Concrete Barrier Details.  
Pay Item for Temporary Concrete Barrier is included with Roadway plans.  
If the Contractor chooses to alter the temporary cantilevered sheet piling design requirements shown on the plans, a design submittal including plan details and calculations will be required for review and acceptance by the Engineer.

**STAGE CONSTRUCTION DETAILS  
STRUCTURE NO. 056-3181**

SHEET NO. 3 25 SHEETS	F.A.S. RTE.	SECTION	COUNTY	TOTAL SHEETS	SHEET NO.
	0028	06-00320-01-BR	MCHENRY	70	27
CONTRACT NO. 63535					
JOB NO. C-91-139-11 ILLINOIS FED. AID PROJECT BRS-0028(107)					

DESIGNED	BLB
CHECKED	AS
DRAWN	BCD
CHECKED	BLB