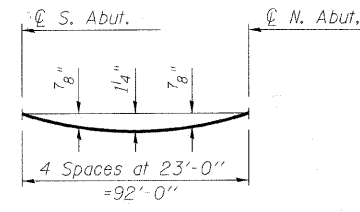
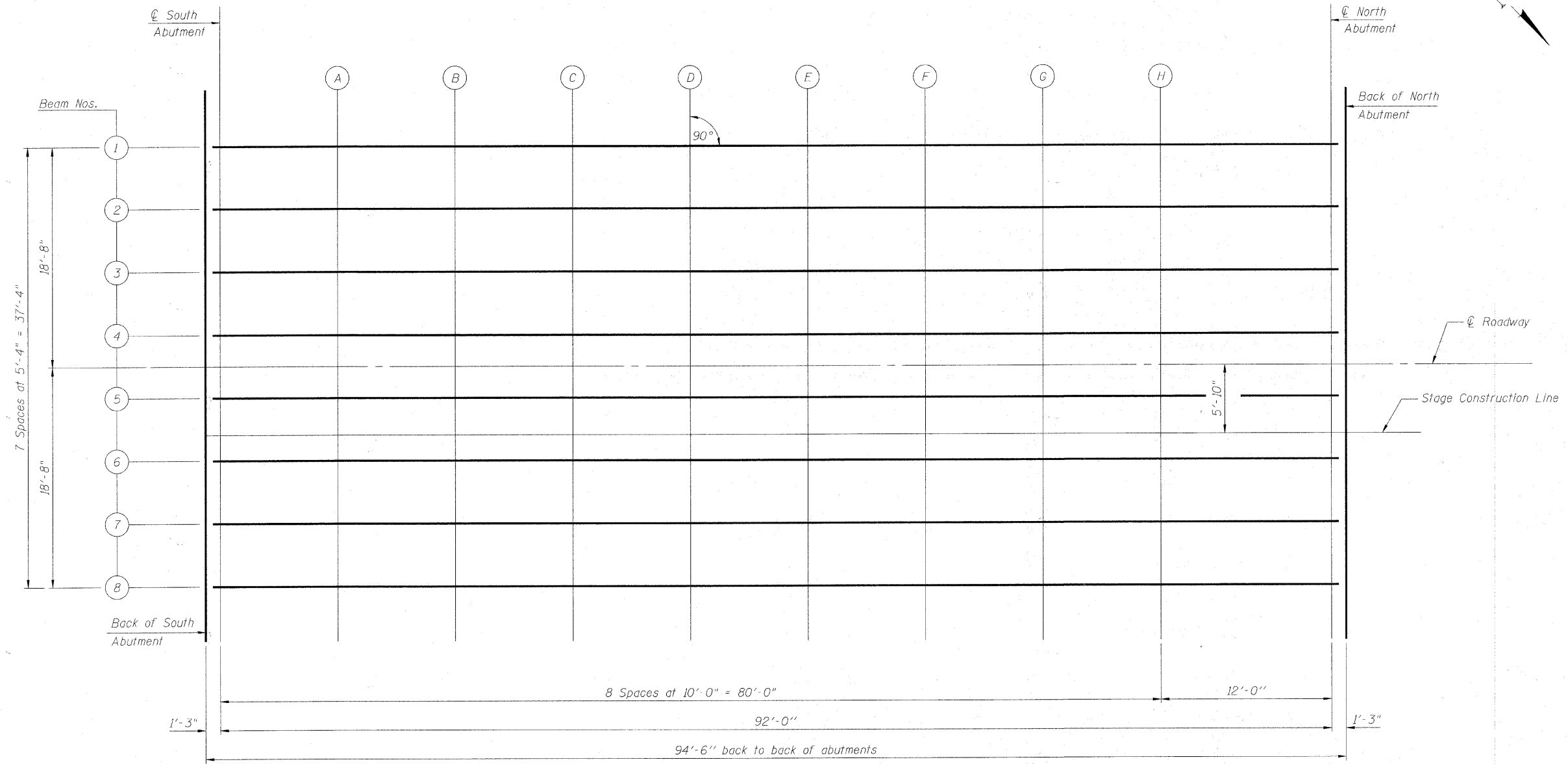
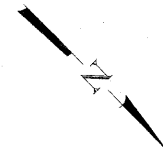
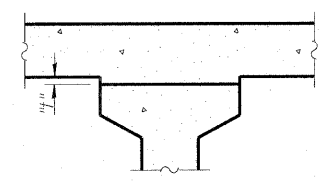


MCHENRY COUNTY
DIVISION OF TRANSPORTATION

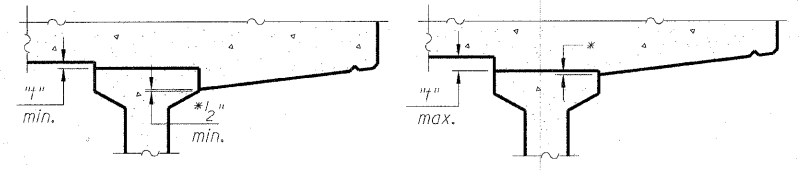


DEAD LOAD DEFLECTION DIAGRAM
(Includes weight of concrete, excluding beams).

Note:
The above deflections are not to be used in the field if the engineer is working from the grade elevations adjusted for dead load deflections as shown in the plans.



INTERIOR BEAMS



FILLET HEIGHTS

EXTERIOR BEAMS

**TOP OF SLAB ELEVATIONS
STRUCTURE NO. 056-3181**

To determine "t": After all precast prestressed beams have been erected, elevations of the top flanges of the beams shall be taken at intervals shown below. These elevations subtracted from the "Theoretical Grade Elevations Adjusted for Dead Load Deflections" shown in the plans, minus slab thickness, equals the fillet heights "t" above top flanges of beams.

DESIGNED	BLB
CHECKED	AS
DRAWN	BCD
CHECKED	BLB

SHEET NO. 5 25 SHEETS	F.A.S. RTE. 0028	SECTION 06-00320-01-BR	COUNTY MCHENRY	TOTAL SHEETS 70	SHEET NO. 29
	CONTRACT NO. 63535				
JOB NO. C-91-139-11 ILLINOIS FED. AID PROJECT BRS-0028(107)					

COPYRIGHT © 2002 BY BAYLER & WOODMAN, INC.
 ALL RIGHTS RESERVED. ANY REPRODUCTION OR TRANSMISSION IN ANY FORM OR BY ANY MEANS, ELECTRONIC OR MECHANICAL, INCLUDING PHOTOCOPYING, RECORDING, OR BY ANY INFORMATION STORAGE AND RETRIEVAL SYSTEM, WITHOUT PERMISSION IN WRITING FROM BAYLER & WOODMAN, INC. IS PROHIBITED.
 LICENSE NO. 184-000014 EXPIRES 4/30/2010
 11/24/2010 9:00:05 AM H:\chicago\mchd\060320\060320-01\060320-01-01.dwg