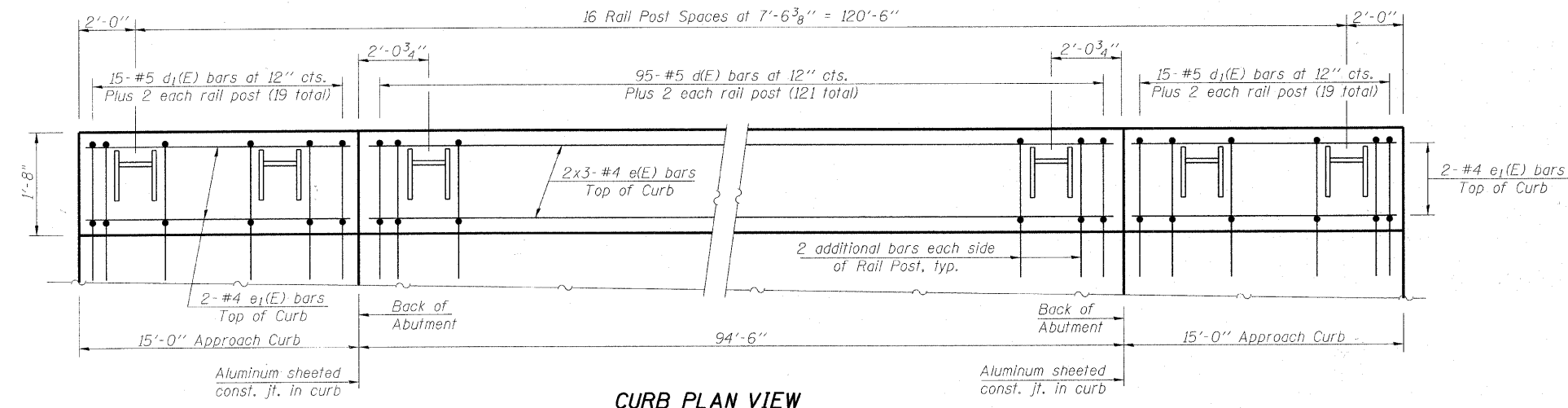
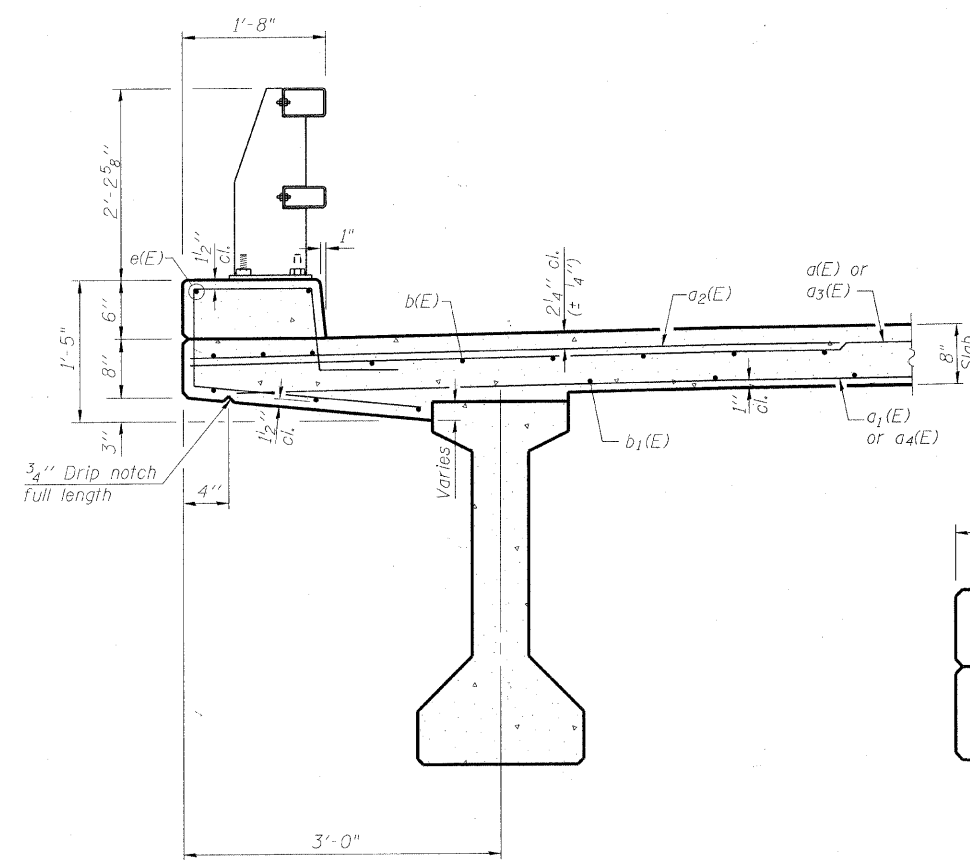


MCHENRY COUNTY
DIVISION OF TRANSPORTATION



CURB PLAN VIEW

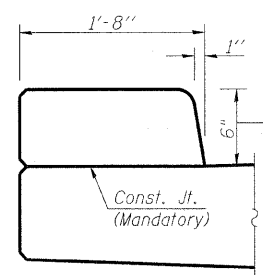


SECTION THRU CURB

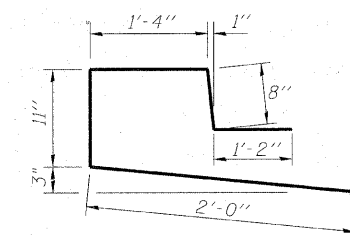
See Sheet 15 of 25 for
Rail Post Anchor Details

MINIMUM BAR LAP

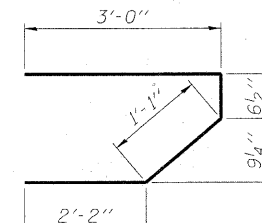
#4 bar = 2'-0"



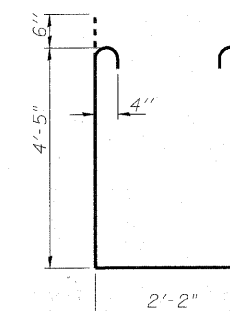
CURB JOINT DETAILS



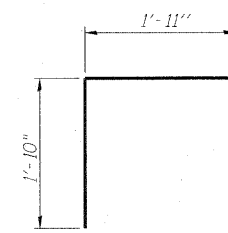
BAR d(E)



BAR s(E)



BAR s1(E)



BAR v(E)

**SUPERSTRUCTURE
BILL OF MATERIAL**

Bar	No.	Size	Length	Shape
a1(E)	163	#5	15'-7"	—
a2(E)	114	#5	15'-3"	—
a3(E)	326	#6	6'-6"	—
a4(E)	163	#5	27'-3"	—
a5(E)	114	#5	26'-11"	—
b(E)	138	#5	33'-2"	—
b1(E)	136	#5	25'-6"	—
d(E)	242	#5	6'-1"	U
e(E)	12	#4	32'-10"	—
m(E)	10	#6	15'-7"	—
m1(E)	12	#6	7'-5"	—
m2(E)	12	#6	3'-3"	—
m3(E)	8	#6	1'-10"	—
m4(E)	10	#6	27'-3"	—
m5(E)	20	#6	8'-2"	—
s(E)	82	#5	6'-10"	U
s1(E)	68	#4	12'-0"	U
v(E)	88	#5	3'-9"	U
Reinforcement Bars, Epoxy Coated			Pound	28250
Concrete Superstructure			Cu. Yd.	146.5
Bar Splicers			Each	379
Bridge Deck Grooving			Sq. Yd.	416
Protective Coat			Sq. Yd.	466

Bars indicated thus 2 x 3 - #4 etc. indicates
2 line of bars with 3 lengths per line.
See Sheet 14 of 25 for Approach Slab bars.

**SUPERSTRUCTURE DETAILS
STRUCTURE NO. 056-3181**

DESIGNED	BLB
CHECKED	AS
DRAWN	BCD
CHECKED	BLB

NOTES:

See Sheets 15 and 16 for Railing Details.

SHEET NO. 11 25 SHEETS	F.A.S. RTE.	SECTION	COUNTY	TOTAL SHEETS	SHEET NO.
	0028	06-00320-01-BR	MCHENRY	70	35
CONTRACT NO. 63535					
JOB NO. C-91-139-11 ILLINOIS FED. AID PROJECT BRS-0028(107)					