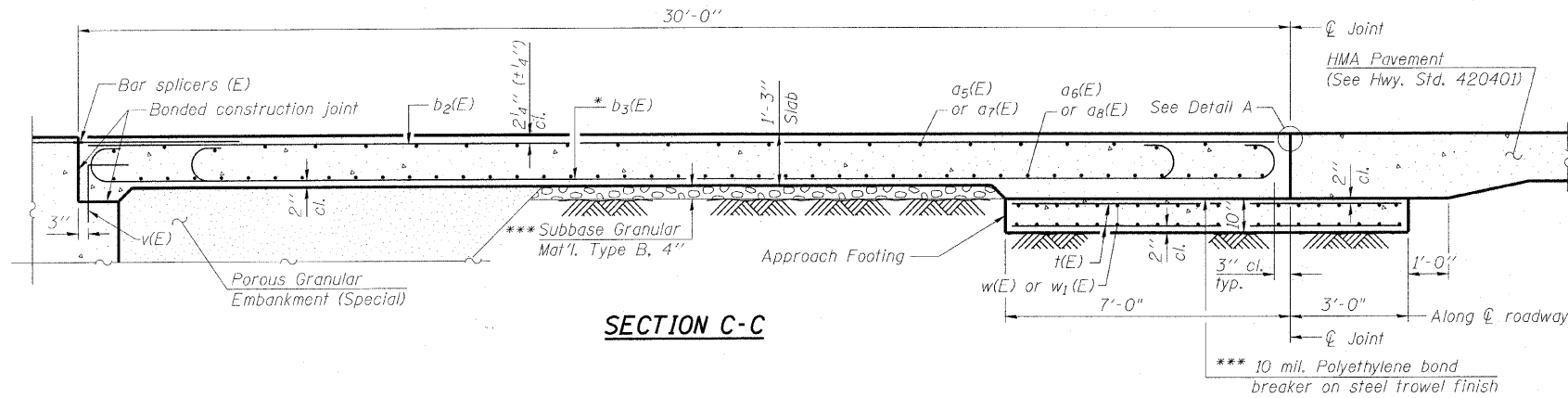


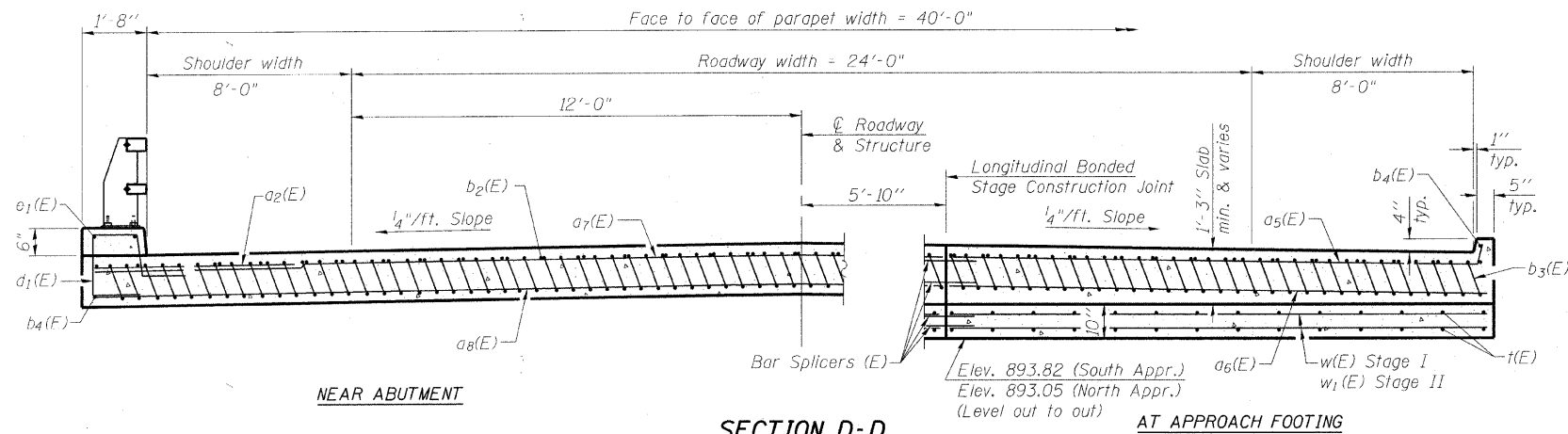
MCHENRY COUNTY
DIVISION OF TRANSPORTATION

Notes:

See sheet 13 of 25 for Detail A and View B-B.
Approach slab and curb concrete shall be paid for as Concrete Superstructure.
Approach footing concrete shall be paid for as Concrete Structures.
Reinforcement shall be paid for as Reinforcement Bars, Epoxy Coated.
For v(E) bar details, see sheet 12 of 25.
The approach footing maximum applied service bearing pressure (Qmax) = 2.0 ksf.
For bar splicer details, see sheet 23 of 25.
Cost of excavation for approach footing included with Concrete Structures.
For Porous Granular Embankment (Special) and drainage treatment details, see sheet 2 of 25.
For additional curb details, see sheet 11 of 25.



SECTION C-C



NEAR ABUTMENT

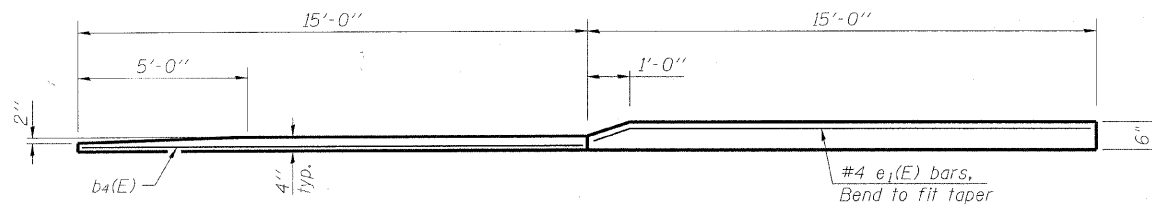
SECTION D-D

(See Plan for dimensions not shown)

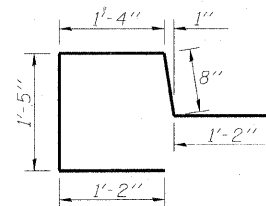
AT APPROACH FOOTING

* Tilt #9 b3(E) bars as required to maintain clearance.

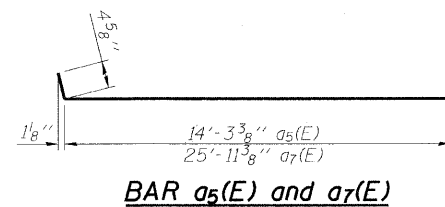
*** Cost included with Concrete Superstructure.



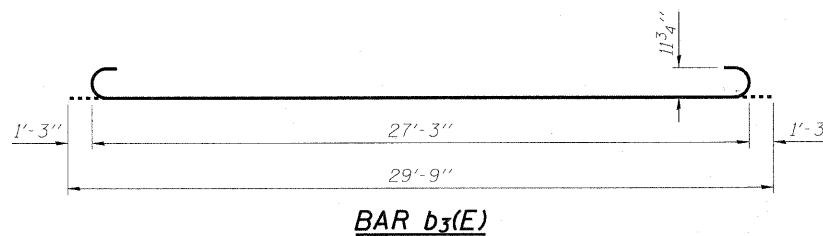
VIEW E-E



BAR d1(E)



BAR a5(E) and a7(E)



BAR b3(E)

TWO APPROACHES
BILL OF MATERIAL

| Bar | No. | Size | Length | Shape |
|----------------------------------|-----|---------|--------|-------|
| a2(E) | 48 | #6 | 6'-6" | — |
| a5(E) | 50 | #4 | 14'-8" | — |
| a6(E) | 92 | #5 | 14'-4" | — |
| a7(E) | 50 | #4 | 26'-4" | — |
| a8(E) | 92 | #5 | 26'-0" | — |
| b2(E) | 66 | #4 | 29'-8" | — |
| b3(E) | 190 | #9 | 29'-9" | — |
| b4(E) | 8 | #4 | 14'-8" | — |
| d1(E) | 76 | #5 | 5'-9" | ┌ |
| e1(E) | 8 | #4 | 14'-8" | — |
| t(E) | 168 | #4 | 9'-8" | — |
| w(E) | 80 | #5 | 14'-4" | — |
| w1(E) | 80 | #5 | 26'-0" | — |
| Concrete Superstructure | | Cu. Yd. | 130.8 | |
| Concrete Structures | | Cu. Yd. | 25.3 | |
| Reinforcement Bars, Epoxy Coated | | Pound | 31300 | |
| Bar Splicers | | Each | 222 | |
| Bridge Deck Grooving | | Sq. Yd. | 266 | |
| Protective Coat | | Sq. Yd. | 296 | |

(Sheet 2 of 2)

BRIDGE APPROACH SLAB DETAILS
STRUCTURE NO. 056-3181

| | |
|----------|-----|
| DESIGNED | BLB |
| CHECKED | AS |
| DRAWN | BCD |
| CHECKED | BLB |

| | | | | | |
|---------------------------|-------------|----------------|--------------------------------|--------------|-----------|
| SHEET NO. 14 25 SHEETS | F.A.S. RTE. | SECTION | COUNTY | TOTAL SHEETS | SHEET NO. |
| | 0034 | 06-00320-02-BR | MCHENRY | 70 | 38 |
| | | | CONTRACT NO. 63535 | | |
| JOB NO. C-91-139-11 | | ILLINOIS | FED. AID PROJECT BRS-0028(107) | | |