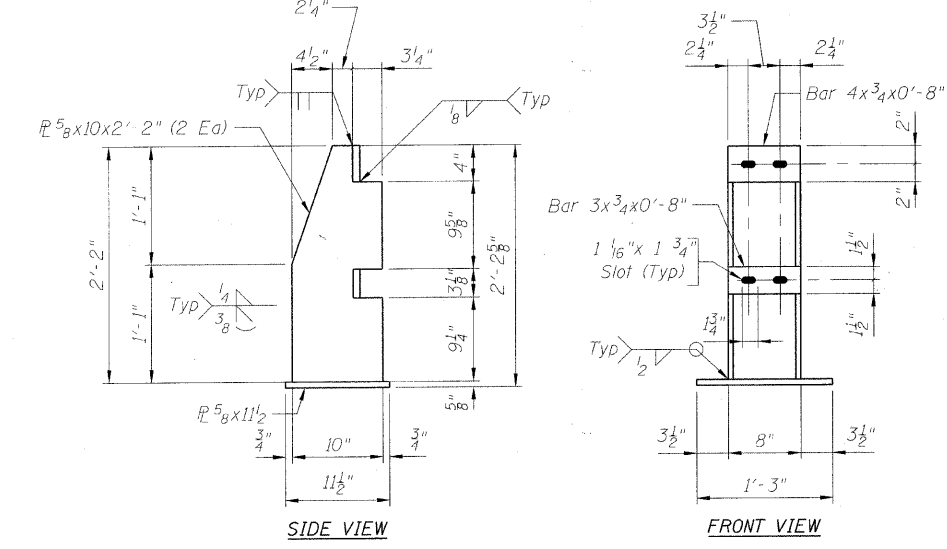
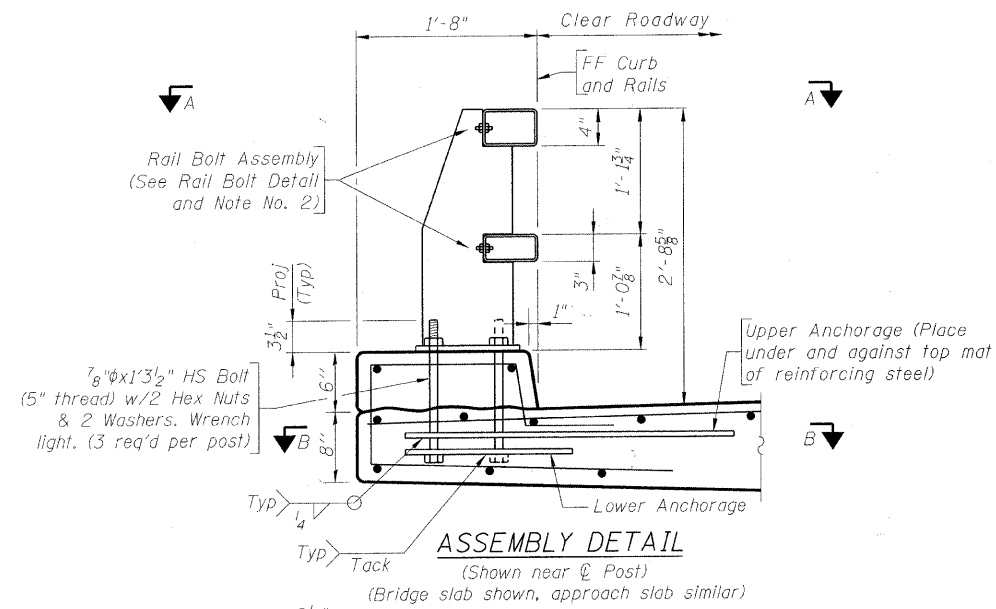
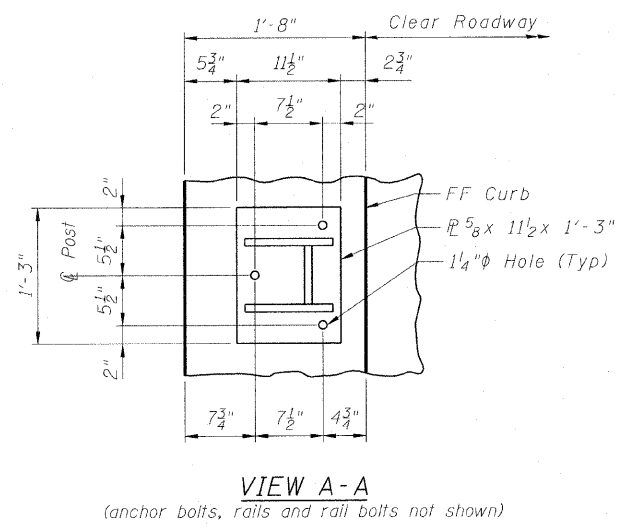
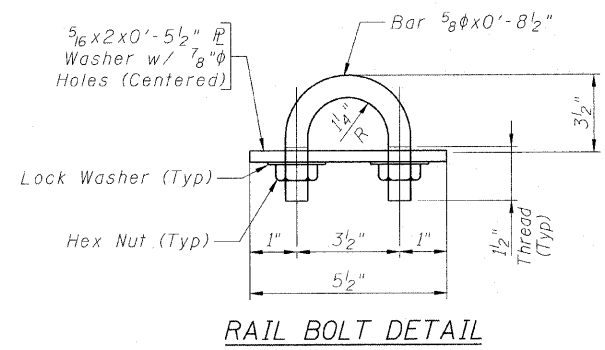
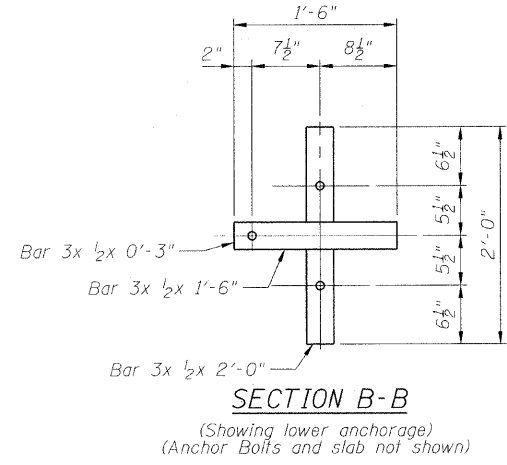
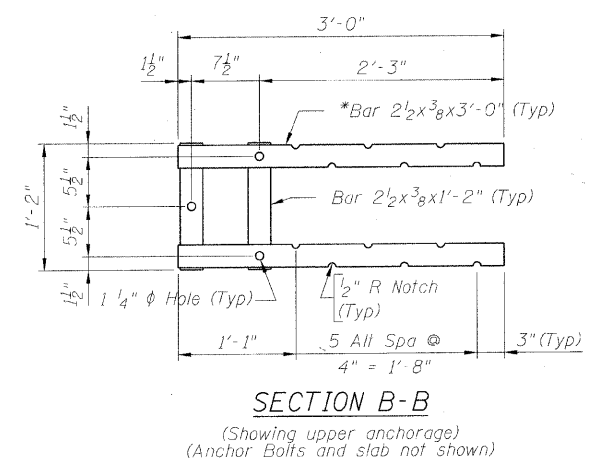


MCHENRY COUNTY
DIVISION OF TRANSPORTATION



POST DETAILS
(See View A-A for anchor bolt hole spacing)



BILL OF MATERIAL

ITEM	UNIT	TOTAL
Steel Railing (Special)	Foot	249

- Note:**
- 1) Anchor bolts may be tack welded to lower anchorage (Shop or field).
 - 2) At post locations, drill two 1/16" ϕ holes in the rails to receive rail bolts (Shop of field). See Post Details for hole spacing
 - 3) Before installing rails, paint all cut, drilled or otherwise damaged surface areas of the railing components with two coats of zinc rich paint conforming to the requirements of ASTM A 780
 - 4) After installing the rails, paint all exposed bolt threads with two coats of zinc rich paint conforming to the requirements of ASTM A 780.
 - 5) All steel components shall be galvanized according to AASHTO M11 unless noted otherwise.
 - 6) Shim Plates shall be provided in accordance with Article 509.05(a) of the Standard Specifications.

**WYOMING 2-TUBE
BRIDGE RAILING DETAILS
STRUCTURE NO. 056-3181**

DESIGNED	BLB
CHECKED	AS
DRAWN	BCD
CHECKED	BI B

SHEET NO. 15 25 SHEETS	F.A.S. RTE.	SECTION	COUNTY	TOTAL SHEETS	SHEET NO.
	0028	06-00320-01-BR	MCHENRY	70	39
JOB NO. C-91-139-11			ILLINOIS FED. AID PROJECT BRS-0028(107)		

COPYRIGHT © 2010 BY BAXTER & WOODMAN, INC.
 ALL RIGHTS RESERVED. NO. 184-00021 - EXPIRES 7/30/2011
 LICENSE NO. 184-00021 - EXPIRES 7/30/2011
 9/20/10 4:11 AM