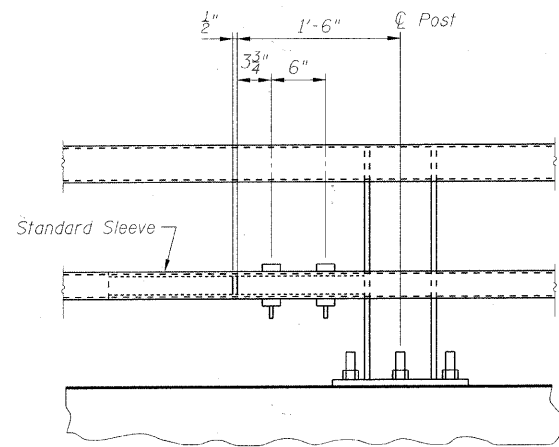
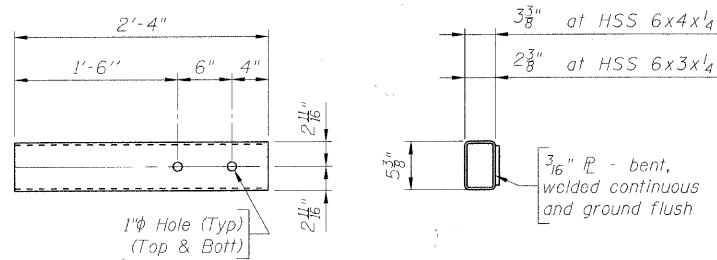


MCHENRY COUNTY
DIVISION OF TRANSPORTATION



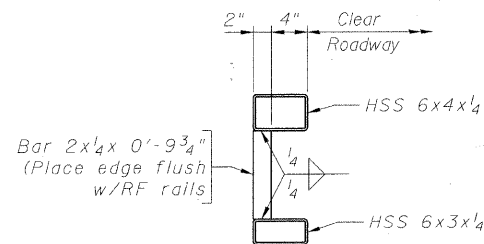
STANDARD SPLICE DETAIL
(Top or bottom rail)



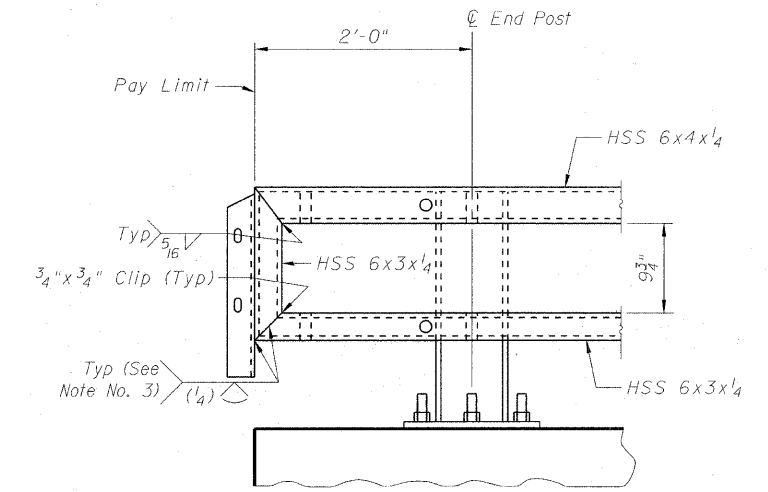
TOP VIEW

END VIEW

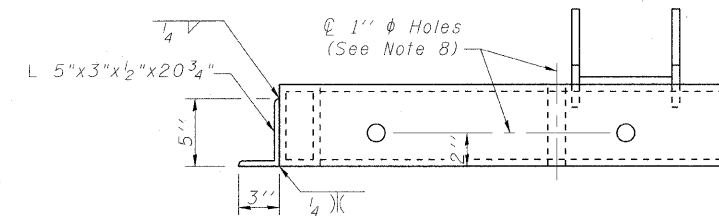
STANDARD SLEEVE DETAILS



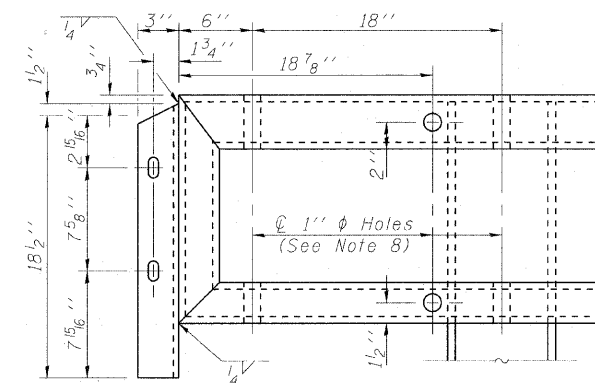
BRACE BAR DETAIL
(See Note No. 4)



ELEVATION AT TERMINAL TYPE 6A (SPECIAL)



TOP VIEW



FRONT VIEW

END OF RAIL

BRIDGE RAILING DETAILS
STRUCTURE NO. 056-3181

NOTES

- 1) Either top or bottom rail in terminal section may be the longer rail.
- 2) Ensure each rail length is continuous over a minimum of two posts. Railing that is part of a type 6A terminal is continuous if either the top or bottom rail in the terminal is continuous over a minimum of two posts.
- 3) Ensure the fabricator prepares a sample of the indicated joint and it is macroetched to demonstrate that the required effective throat is achieved.
- 4) Ensure a Brace Bar is placed 2'-0" from the splice end of the shorter tube at Traffic Barrier Terminals.
- 5) Splices may be located on either side of post.
- 6) Not more than one splice is permitted per side of post.
- 7) Do not shop splice rails.
- 8) Holes in Steel Railings may be field drilled for connection to Traffic Barrier Terminal. Any galvanized steel exposed or damaged by drilling operation shall be painted with two coats of a zinc-rich paint conforming to ASTM A 780.

DESIGNED	BLB
CHECKED	AS
DRAWN	BCD
CHECKED	BLB

SHEET NO. 16	F.A.S. RTE.	SECTION	COUNTY	TOTAL SHEETS	SHEET NO.
25 SHEETS	0028	06-00320-01-BR	MCHENRY	70	40
CONTRACT NO. 63535					
JOB NO. C-91-139-11 ILLINOIS FED. AID PROJECT BRS-0028(107)					

COPYRIGHT © 2016 BY BAXTER & WOODMAN, INC. ALL RIGHTS RESERVED. ILLINOIS PROFESSIONAL ENGINEER LICENSE NO. 084-001218 - EXPIRES 4/30/2018
 PROJECT NO. 056-3181-01-BR
 DRAWING NO. 056-3181-01-BR-001