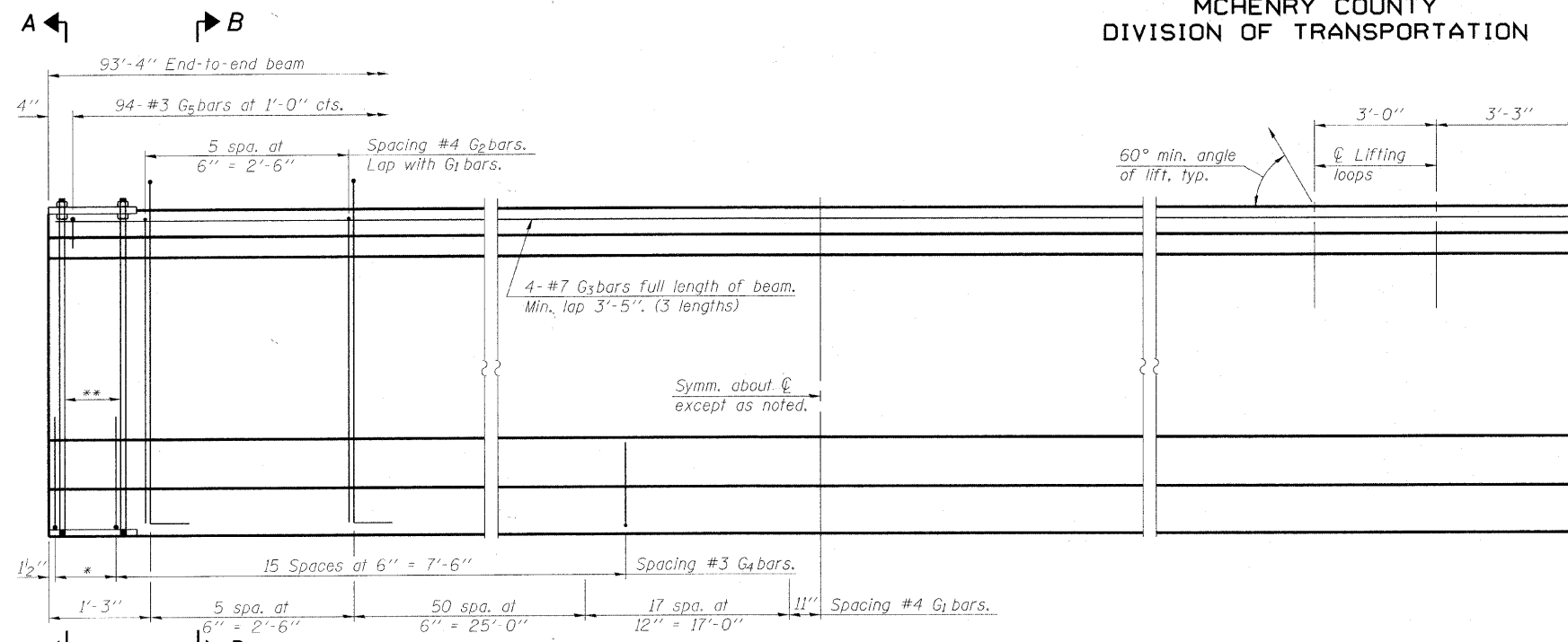


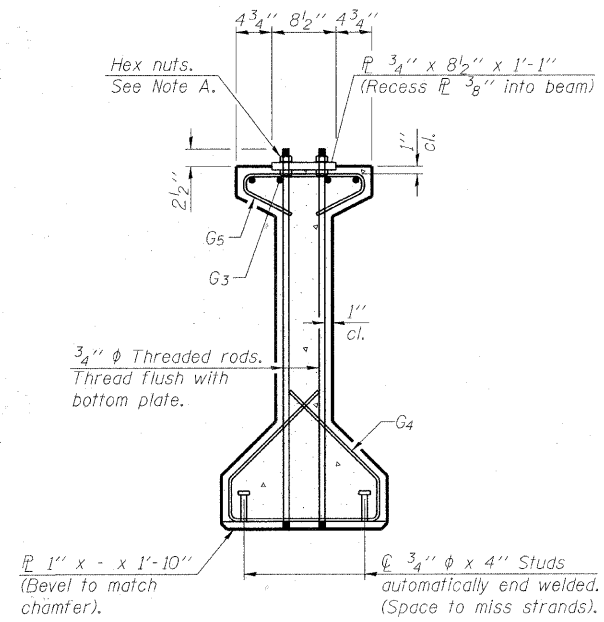
MCHENRY COUNTY
DIVISION OF TRANSPORTATION



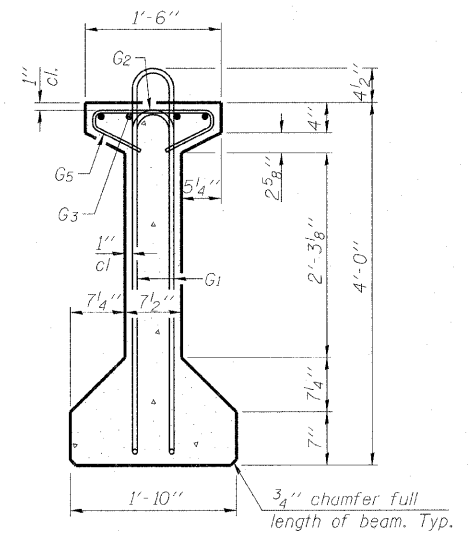
ELEVATION OF BEAM
(Showing reinforcement & dimensions)

* 3 spaces at 3" = 9"
** 4- 3/4" φ threaded dowel rods at 3" cts., Each Face.

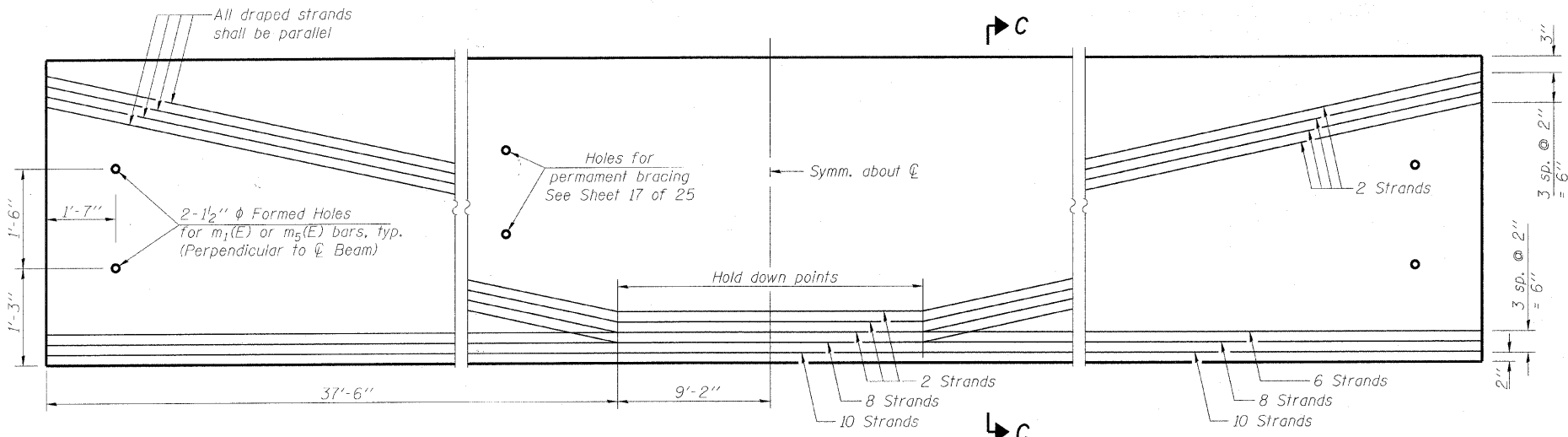
Note A:
Hex nuts (top and bottom) with lock washers (top). Only tighten sufficiently to compress lock washers.



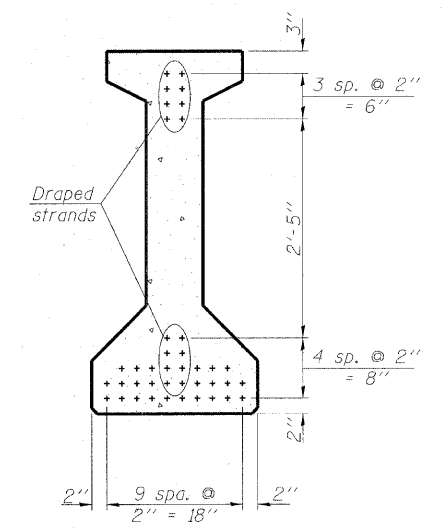
SECTION A-A



SECTION B-B



ELEVATION OF BEAM
(Showing prestressing steel)



SECTION C-C

*****BAR LIST
ONE BEAM ONLY**

Bar	No.	Size	Length	Shape
G1	147	#4	9'-6"	⊔
G2	12	#4	7'-11"	⊔
G3	12	#7	33'-5"	⊔
G4	38	#3	5'-3"	⊔
G5	94	#3	2'-9"	⊔

***For information only

Notes:
See sheet 19 of 25 for additional details and Bill of Material.
Required release strength, f'ci, shall be 6,000 psi.

**48" PPC I-BEAM
STRUCTURE NO. 056-3181**

DESIGNED	RLB
CHECKED	AS
DRAWN	BCD
CHECKED	BLB

SHEET NO. 18 25 SHEETS	F.A.S. RTE.	SECTION	COUNTY	TOTAL SHEETS	SHEET NO.
	0028	06-00320-01-BR	MCHENRY	70	42
			CONTRACT NO. 63535		
JOB NO. C-91-139-11		ILLINOIS FED. AID PROJECT BRS-0028(107)			

COPYRIGHT © 2000 BY BRANTER & WOODMAN, INC.
 ALL RIGHTS RESERVED. NO PART OF THIS PUBLICATION
 MAY BE REPRODUCED OR TRANSMITTED IN ANY FORM
 OR BY ANY MEANS, ELECTRONIC OR MECHANICAL,
 INCLUDING PHOTOCOPYING, RECORDING, OR BY
 ANY INFORMATION STORAGE AND RETRIEVAL SYSTEM.
 LICENSE NO. 184-00029 - EXPIRES 4/30/2001
 9000554 MW