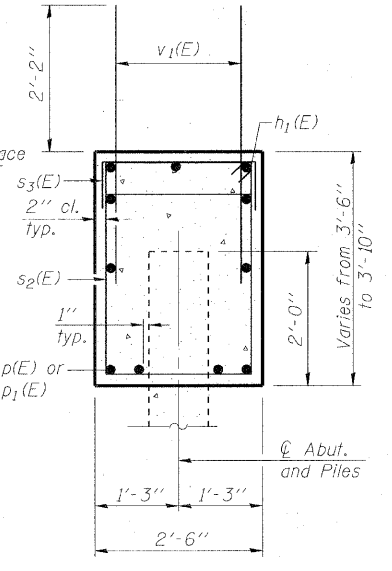
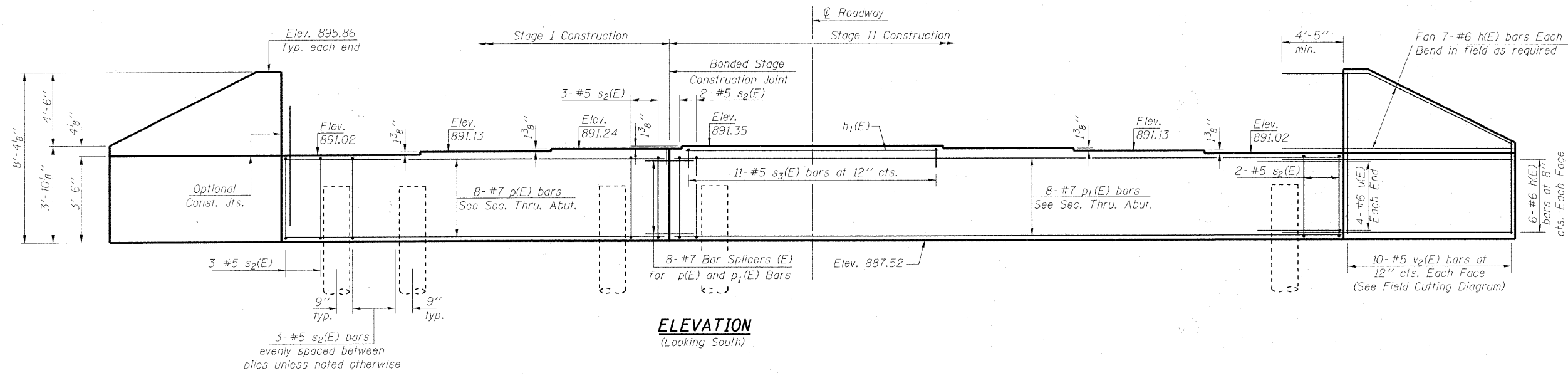


MCHENRY COUNTY
DIVISION OF TRANSPORTATION

Notes:
Four steps monolithically with cap.



BILL OF MATERIAL

Bar	No.	Size	Length	Shape
h(E)	52	#6	15'-3"	—
h ₁ (E)	3	#5	10'-4"	—
p(E)	8	#7	15'-6"	—
p ₁ (E)	8	#7	27'-2"	—
s ₂ (E)	40	#5	11'-7"	□
s ₃ (E)	11	#5	4'-2"	□
u(E)	8	#6	11'-0"	□
v ₁ (E)	78	#5	4'-4"	—
v ₂ (E)	20	#5	11'-6"	—
Structure Excavation	Cu. Yd.		199	
Concrete Structures	Cu. Yd.		18.6	
Reinforcement Bars, Epoxy Coated	Pound		3180	
Furnishing Metal Shell Piles 14"x0.312"	Foot		253	
Driving Piles	Foot		253	
Test Pile Metal Shells	Each		1	
Pile Shoes	Each		12	

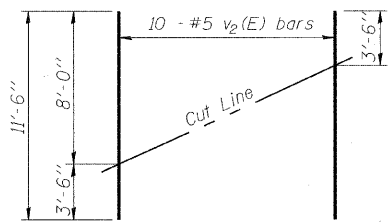
For details of Bar Splicers, see sheet 23 of 25.
For details of piles and Concrete Encasement, see sheet 22 of 25.

PILE DATA

Type: 14" ϕ Metal Shells w/ 0.312" walls with Pile Shoes
Nominal Required Bearing: 320 Kips
Factored Resistance Available: 160 Kips
Est. Length: 23'
No. Production Piles: 11
No. Test Piles: 1

NOTE:
Contractor shall drive one test pile in a permanent location as directed by the Engineer prior to ordering the remainder of piles.

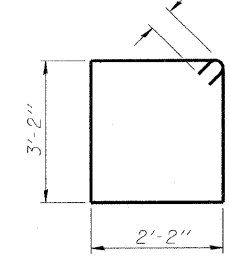
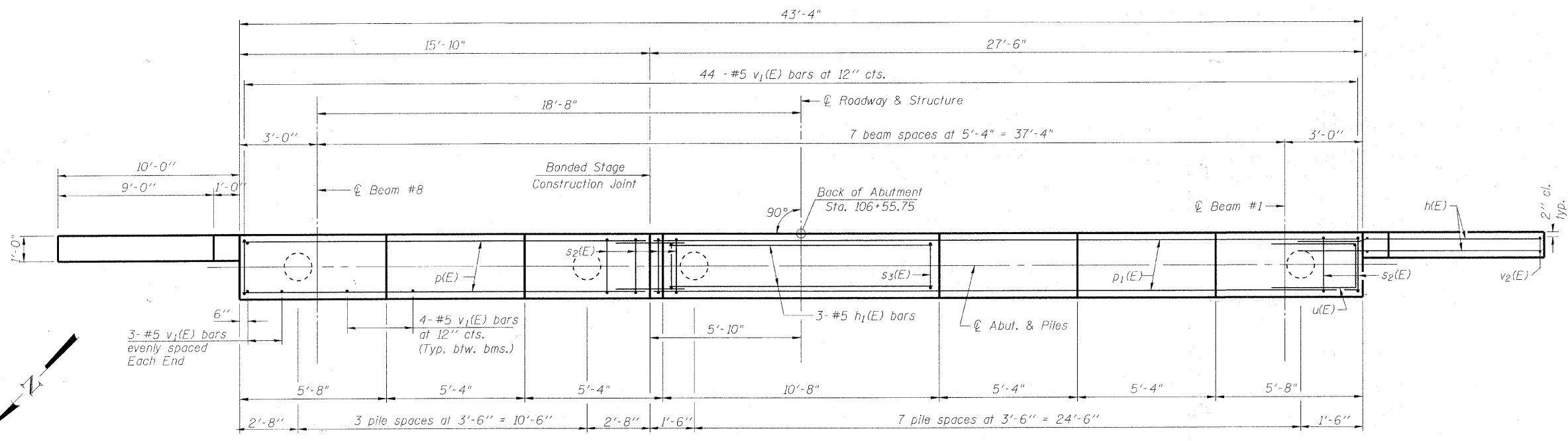
DESIGNED	BLB
CHECKED	AS
DRAWN	BCD
CHECKED	BLB



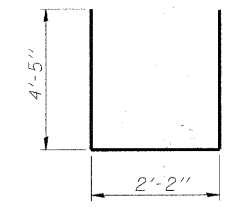
FIELD CUTTING DIAGRAM

Order v₂(E) full length. Cut as shown and use remainder of bars in opposite face.

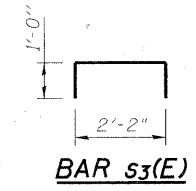
PLAN



BAR s₂(E)



BAR u(E)



BAR s₃(E)

**SOUTH ABUTMENT
STRUCTURE NO. 056-3181**

SHEET NO. 20 25 SHEETS	F.A.S. RTE. 0028	SECTION 06-00320-01-BR	COUNTY MCHENRY	TOTAL SHEETS 70	SHEET NO. 44
	CONTRACT NO. 63535				
JOB NO. C-91-139-11 ILLINOIS FED. AID PROJECT BRS-0028(107)					

COPYRIGHT © 2010 BY BAYVIEW & WOODWARD, INC.
 ALL RIGHTS RESERVED. NO PART OF THIS PUBLICATION MAY BE REPRODUCED OR TRANSMITTED IN ANY FORM OR BY ANY MEANS, ELECTRONIC OR MECHANICAL, INCLUDING PHOTOCOPYING, RECORDING, OR BY ANY INFORMATION STORAGE AND RETRIEVAL SYSTEM.
 LICENSE NO. 184-00021 - EXPIRES 6/30/2011
 2/4/2011 9:50:50 AM