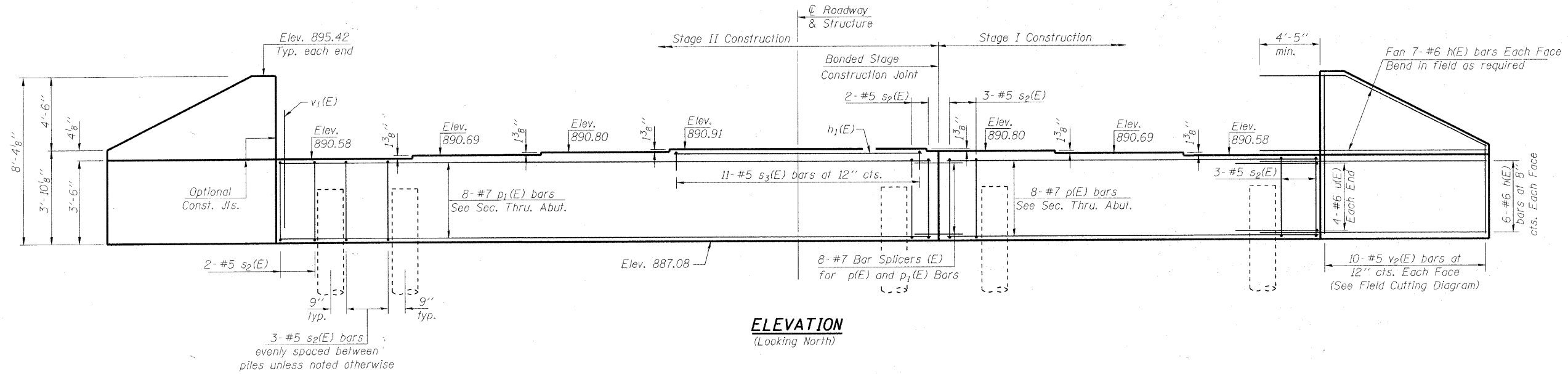
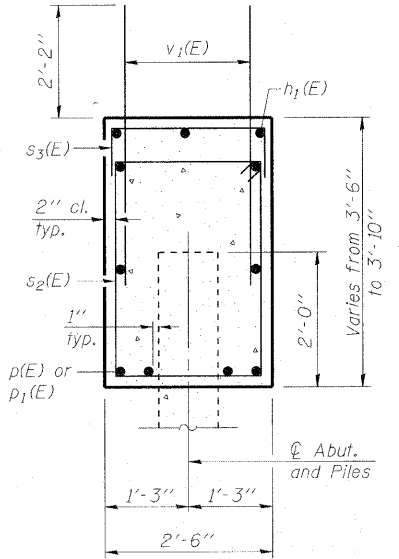


MCHENRY COUNTY  
DIVISION OF TRANSPORTATION

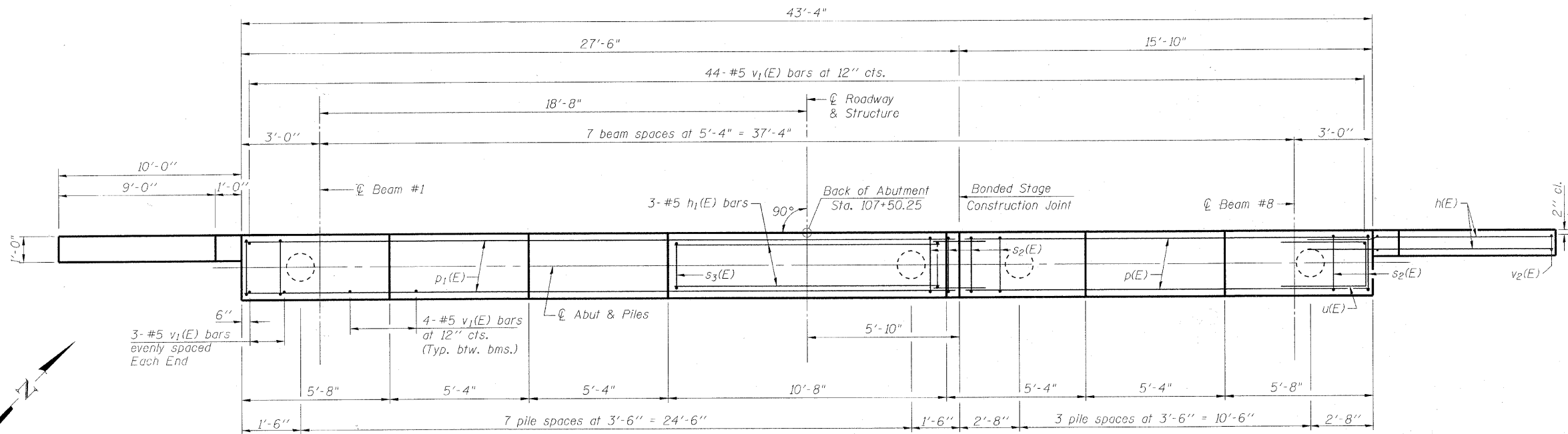
Notes:  
Pour steps monolithically with cap.



**ELEVATION**  
(Looking North)



**SEC. THRU ABUT.**



**PLAN**

**BILL OF MATERIAL**

Bar	No.	Size	Length	Shape
h(E)	52	#6	15'-3"	—
h1(E)	3	#5	10'-4"	—
p(E)	8	#7	15'-6"	—
p1(E)	8	#7	27'-2"	—
s2(E)	40	#5	11'-7"	□
s3(E)	11	#5	4'-2"	□
u(E)	8	#6	11'-0"	□
v1(E)	78	#5	4'-4"	—
v2(E)	20	#5	11'-6"	—
Structure Excavation		Cu. Yd.	199	
Concrete Structures		Cu. Yd.	18.6	
Reinforcement Bars, Epoxy Coated		Pound	3180	
Furnishing Metal Shell Piles 14" x 0.312"		Foot	308	
Driving Piles		Foot	308	
Test Pile Metal Shells		Each	1	
Pile Shoes		Each	12	

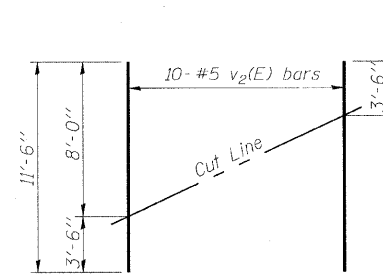
For details of Bar Splicers, see sheet 23 of 25.  
For details of piles and Concrete Encasement, see sheet 22 of 25.

**PILE DATA**

Type: 14"  $\phi$  Metal Shells w/ 0.312" walls with Pile Shoes  
Nominal Required Bearing: 320 Kips  
Factored Resistance Available: 160 Kips  
Est. Length: 28'  
No. Production Piles: 11  
No. Test Piles: 1

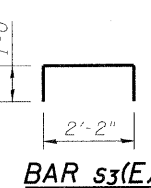
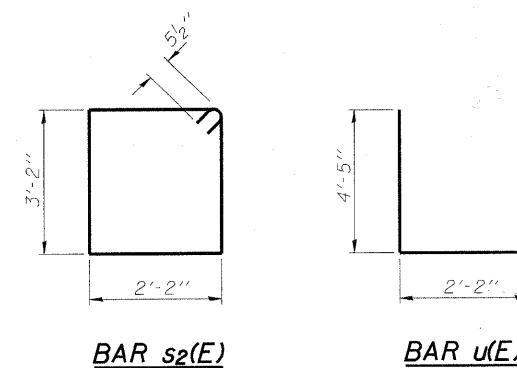
DESIGNED	BLB
CHECKED	AS
DRAWN	BCD
CHECKED	BLB

NOTE:  
Contractor shall drive one test pile in a permanent location as directed by the Engineer prior to ordering the remainder of piles.



**FIELD CUTTING DIAGRAM**

Order v2(E) full length. Cut as shown and use remainder of bars in opposite face.



**NORTH ABUTMENT  
STRUCTURE NO. 056-3181**

SHEET NO. 21 25 SHEETS	F.A.S. RTE.	SECTION	COUNTY	TOTAL SHEETS	SHEET NO.
	0028	06-00320-01-BR	MCHENRY	70	45
CONTRACT NO. 63535					
JOB NO. C-91-139-11 ILLINOIS FED. AID PROJECT BRS-0028(107)					

COPYRIGHT © 2010 BY BAXTER & WOODMAN, INC.  
 ALL RIGHTS RESERVED. NO PART OF THIS DRAWING IS TO BE REPRODUCED OR TRANSMITTED IN ANY FORM OR BY ANY MEANS, ELECTRONIC OR MECHANICAL, INCLUDING PHOTOCOPYING, RECORDING, OR BY ANY INFORMATION STORAGE AND RETRIEVAL SYSTEM, WITHOUT PERMISSION IN WRITING FROM BAXTER & WOODMAN, INC.  
 PROJECT NO. 06-00320-01-BR SHEET NO. 21 OF 45  
 DATE: 11/11/10