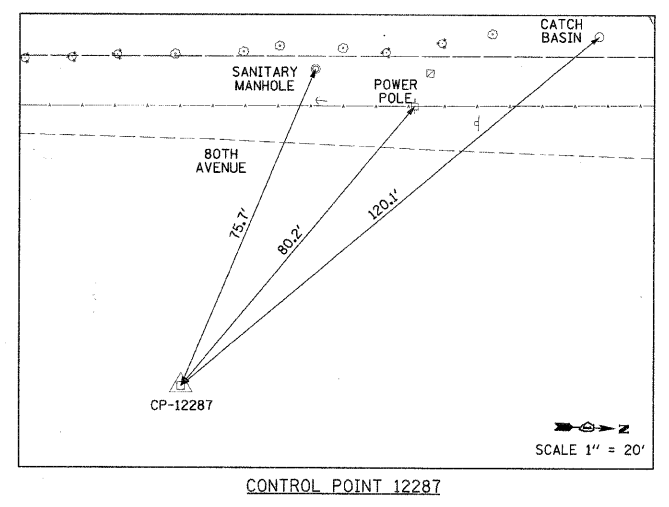


123rd STREET
POT Sta 99+20.11

PROJECT BEGINS
STA 98+47.00

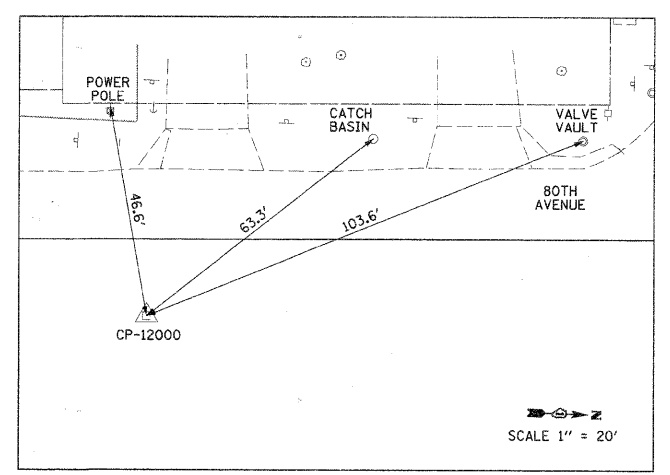
N 1,821,901.57
E 1,125,622.70



CONTROL POINT 12287

BROOK LANE

OSBM 10-1



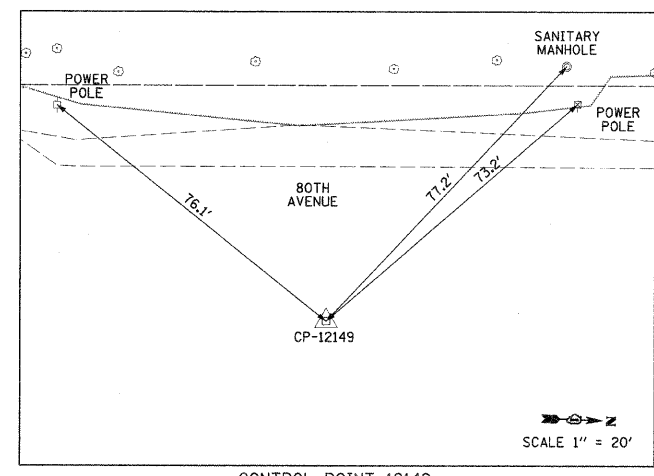
CONTROL POINT 12000

PROJECT ENDS
STA 112+32.40

121st STREET
POT Sta 112+47.09



80th AVENUE



CONTROL POINT 12149

HORIZONTAL CONTROL POINTS					
CP NO.	NORTHING (Y)	EASTING (X)	DESCRIPTION	STATION	OFFSET
CP-12000	1,823,091.42	1,125,598.06	PK NAIL	107+04.78	18.91 RT
CP-12149	1,822,686.43	1,125,614.25	PK NAIL	111+10.09	16.79 RT
CP-12287	1,822,177.17	1,125,645.71	REBAR	101+94.73	32.61 RT

ELEVATION BENCHMARKS DATUM: NAVD 1988		
NO.	DESCRIPTION	ELEV.
OSBM 1	SOUTH FLANGE BOLT OF FIRE HYDRANT IN DRIVE TO METRA STATION (REF JOB #060285)	627.22
OSBM 10-1	R.R. SPIKE IN UTILITY POLE AT N.W. CORNER OF BROOK LANE AND 80TH AVENUE	637.41

* TO CONVERT TO COOK COUNTY HIGHWAY DEPARTMENT DATUM
ADD 2.61' TO ALL ELEVATIONS

FILE NAME =	USER NAME = CMCCOLLO	DESIGNED - CJM	REVISED -
N:\palospark\100055\Civil\BHN1_100055.DGN		DRAWN - CJM	REVISED -
	PLOT SCALE = 50'	CHECKED - KRC/DV	REVISED -
	PLOT DATE = 2/17/2011	DATE - 10/20/10	REVISED -

STATE OF ILLINOIS
DEPARTMENT OF TRANSPORTATION

ALIGNMENT, TIES AND BENCHMARKS VILLAGE OF PALOS PARK			
SCALE: 1"=50'	SHEET NO.	OF SHEETS	STA. TO STA.

F.A.U. RTE.	SECTION	COUNTY	TOTAL SHEETS	SHEET NO.
2756	09-00029-00-SW	COOK	14	4
CONTRACT NO. 63548				
ILLINOIS FED. AID PROJECT				