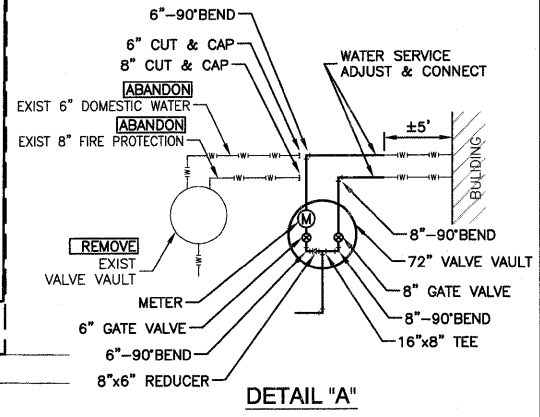
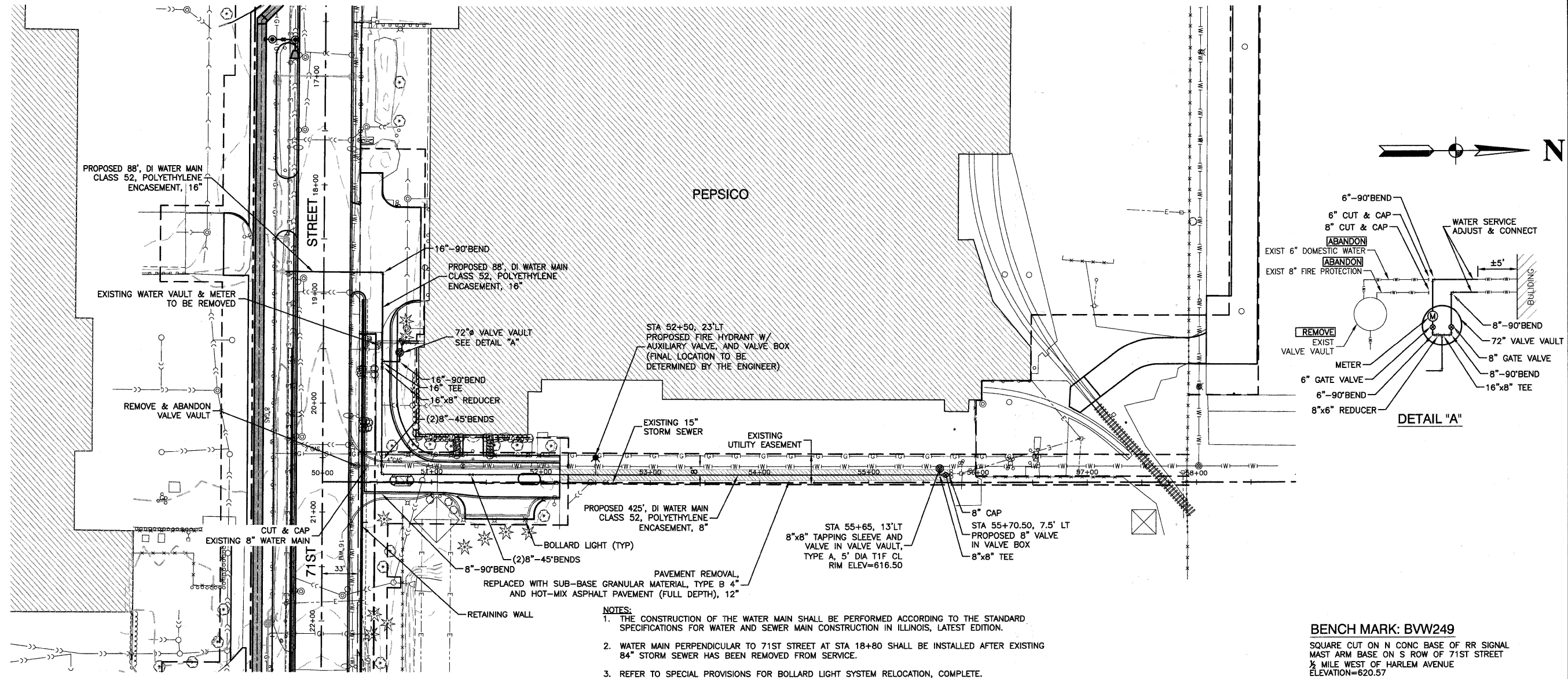


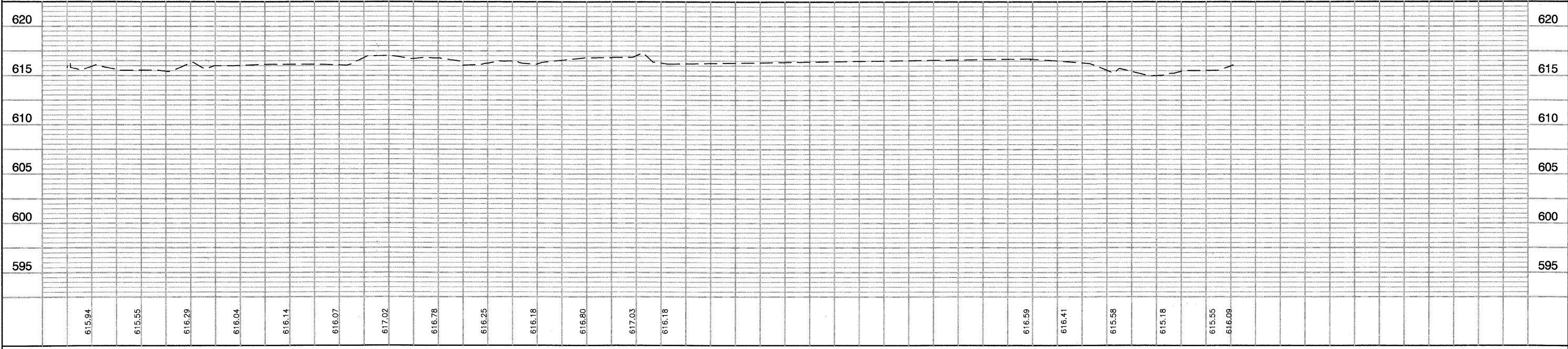
DATE	
BY	
REVISIONS	
NO.	
DESCRIPTION	
DATE	
BY	
PLAN	
NO.	
DESCRIPTION	
DATE	
BY	

DATE	
BY	
REVISIONS	
NO.	
DESCRIPTION	
DATE	
BY	
PROFILE	
NO.	
DESCRIPTION	
DATE	
BY	



- NOTES:**
1. THE CONSTRUCTION OF THE WATER MAIN SHALL BE PERFORMED ACCORDING TO THE STANDARD SPECIFICATIONS FOR WATER AND SEWER MAIN CONSTRUCTION IN ILLINOIS, LATEST EDITION.
  2. WATER MAIN PERPENDICULAR TO 71ST STREET AT STA 18+80 SHALL BE INSTALLED AFTER EXISTING 84\"/>
  - 3. REFER TO SPECIAL PROVISIONS FOR BOLLARD LIGHT SYSTEM RELOCATION, COMPLETE.

**BENCH MARK: BW249**  
 SQUARE CUT ON N CONC BASE OF RR SIGNAL  
 MAST ARM BASE ON S ROW OF 71ST STREET  
 1/4 MILE WEST OF HARLEM AVENUE  
 ELEVATION=620.57



FILE NAME = 09353-WTMN-02 - P01	USER NAME =	DESIGNED -- PKB	REVISED --	71ST STREET				F.A.U. RTE. 1537	SECTION 06-00050-00-GS	COUNTY COOK	TOTAL SHEETS 209	SHEET NO. 56
	PLOT SCALE =	CHECKED -- PKB	REVISED --	WATER MAIN PLAN & PROFILE				CONTRACT NO. 63556		FED. ROAD DIST. NO. 1 ILLINOIS FED. AID PROJECT CRE-9003(709)		
	PLOT DATE = 12/23/10	DRAWN -- PS	REVISED --	SCALE: H 1"=50' V 1"=5'				SHEET NO. 56 OF 209 SHEETS		STA. TO STA.		
		CHECKED -- AG	REVISED --									