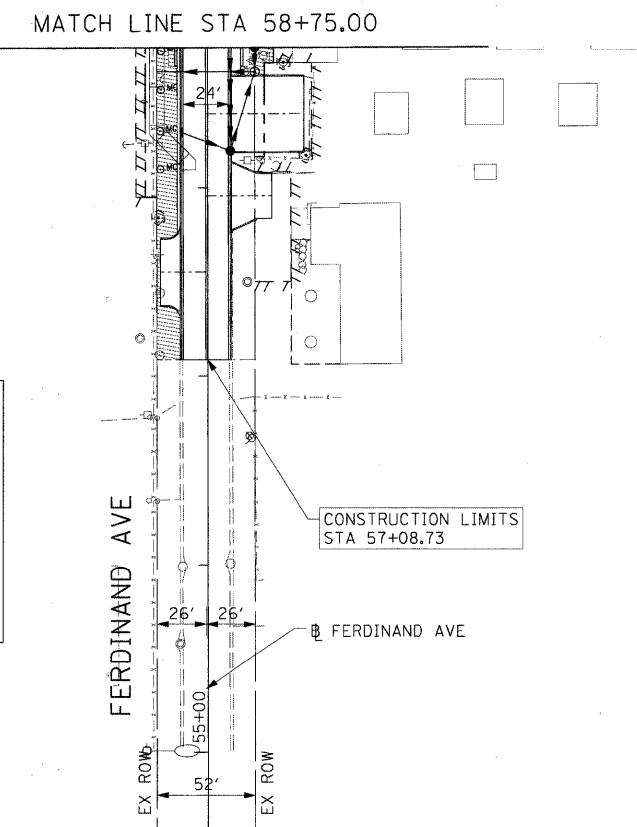
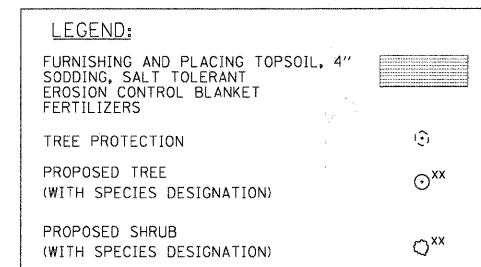
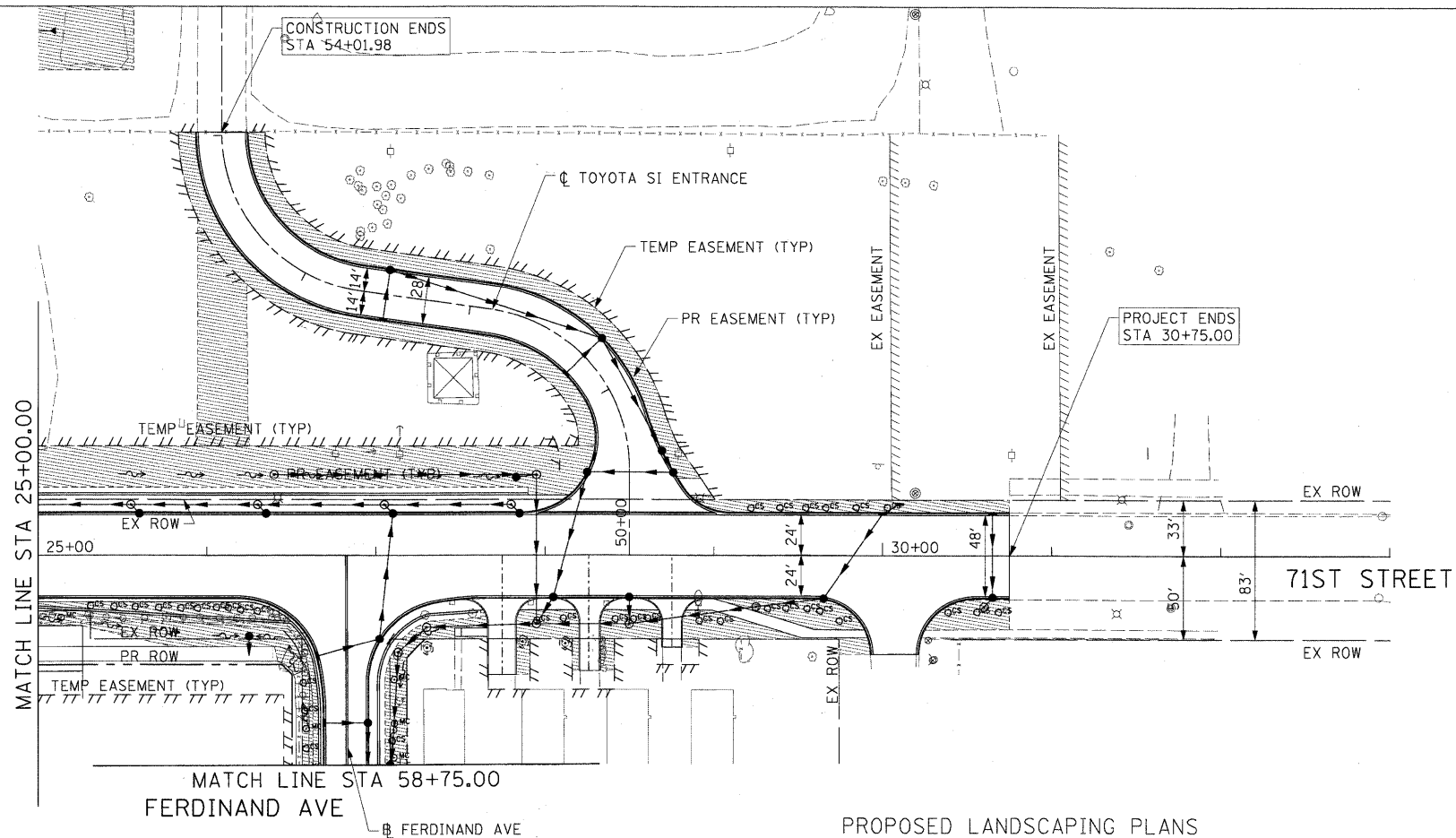


PROPOSED EROSION CONTROL PLANS



PROPOSED LANDSCAPING PLANS



USER NAME = manoj	DESIGNED - ST	REVISED -
PLOT SCALE = 50.000' / 1" =	DRAWN - ST	REVISED -
PLOT DATE = 2/17/2011	CHECKED - TJW	REVISED -
	DATE - FEBRUARY 17, 2011	REVISED -

STATE OF ILLINOIS
DEPARTMENT OF TRANSPORTATION

PROPOSED EROSION CONTROL AND
LANDSCAPING PLANS

SCALE: 1"=50' SHEET NO. 2 OF 3 SHEETS STA 25+00.00 TO STA 30+75.00

F.A.U. RTE.	SECTION	COUNTY	TOTAL SHEETS	SHEET NO.
1537	06-00050-00-GS	COOK	209	77
CONTRACT NO. 63556				
FED. ROAD DIST. NO. 1 ILLINOIS FED. AID PROJECT CRE-9003(709)				

FILE NAME = P:\60158877\000_CAD\001_Drawing\Sheets\Civil\60158877-ent-eros_indisp-42.dgn