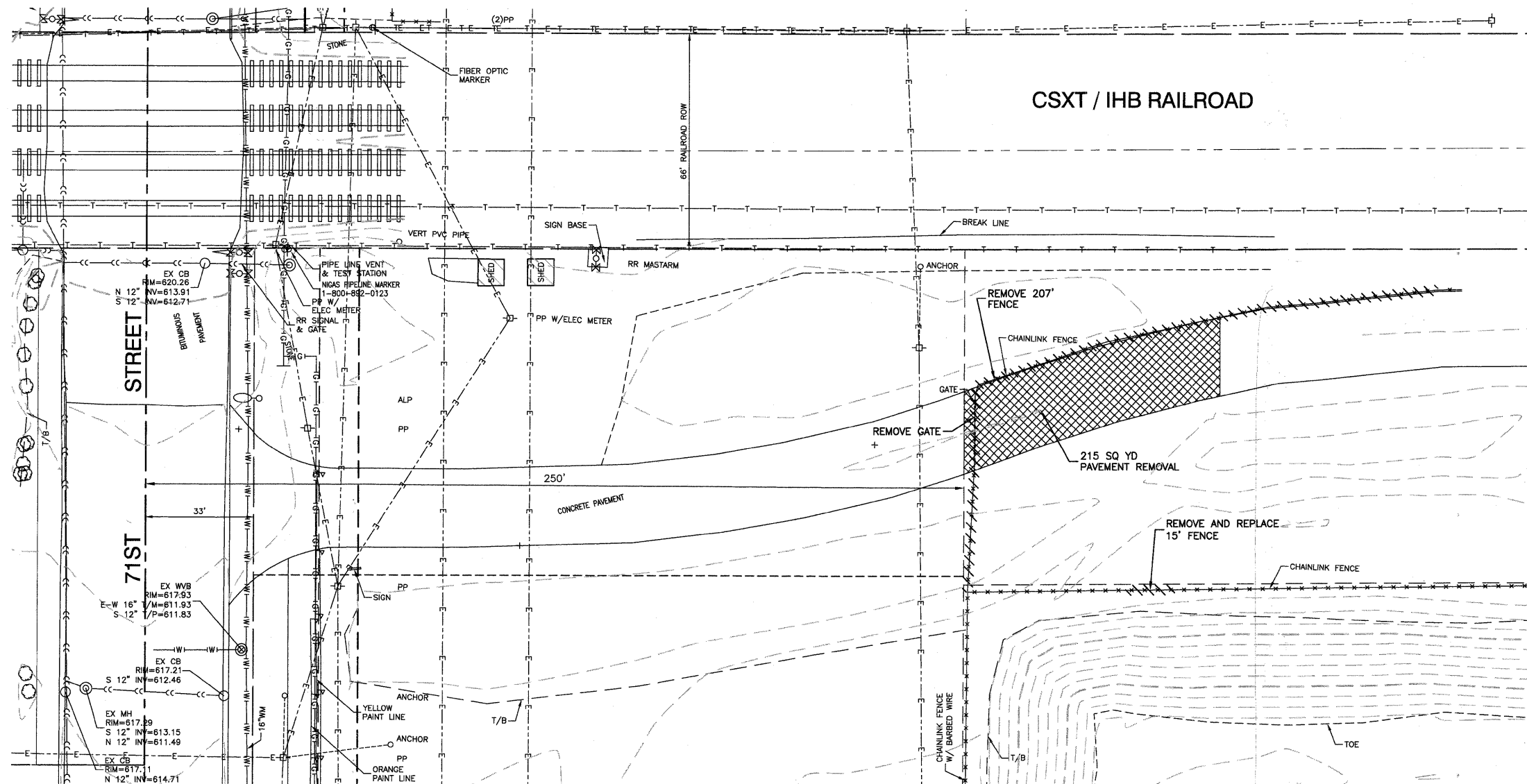


DATE	
BY	
DESIGNED	
CHECKED	
PLANNED	
ALIGNED	
NOTED	
NOTE BOOK NO.	
CADD FILE NAME	

DATE	
BY	
DESIGNED	
CHECKED	
PLANNED	
ALIGNED	
NOTED	
NOTE BOOK NO.	
CADD FILE NAME	



LEGEND
 PAVEMENT REMOVAL

BENCH MARK: BVW249

SQUARE CUT ON N CONC BASE OF RR SIGNAL
MAST ARM BASE ON S ROW OF 71ST STREET
1/2 MILE WEST OF HARLEM AVENUE
ELEVATION=620.57

FILE NAME = 09353_02-PLPR-01 - IDOT PLPR01

USER NAME =	DESIGNED -- PKB	REVISED -- REL - 02-09-11
	CHECKED -- PKB	REVISED --
PLOT SCALE =	DRAWN -- PS/LTL	REVISED --
PLOT DATE = 12/23/10	CHECKED -- AG	REVISED --

STATE OF ILLINOIS
DEPARTMENT OF TRANSPORTATION

71ST STREET

PUMPING STATION EXISTING CONDITIONS & REMOVAL PLAN

SCALE: 1"=20 SHEET NO. 88 OF 209 SHEETS STA. TO STA.

F.A.U. RTE.	SECTION	COUNTY	TOTAL SHEETS	SHEET NO.
1537	06-00050-00-GS	COOK	209	88
CONTRACT NO. 63556				
FED. ROAD DIST. NO. 1 ILLINOIS FED. AID PROJECT CRE-9003(709)				