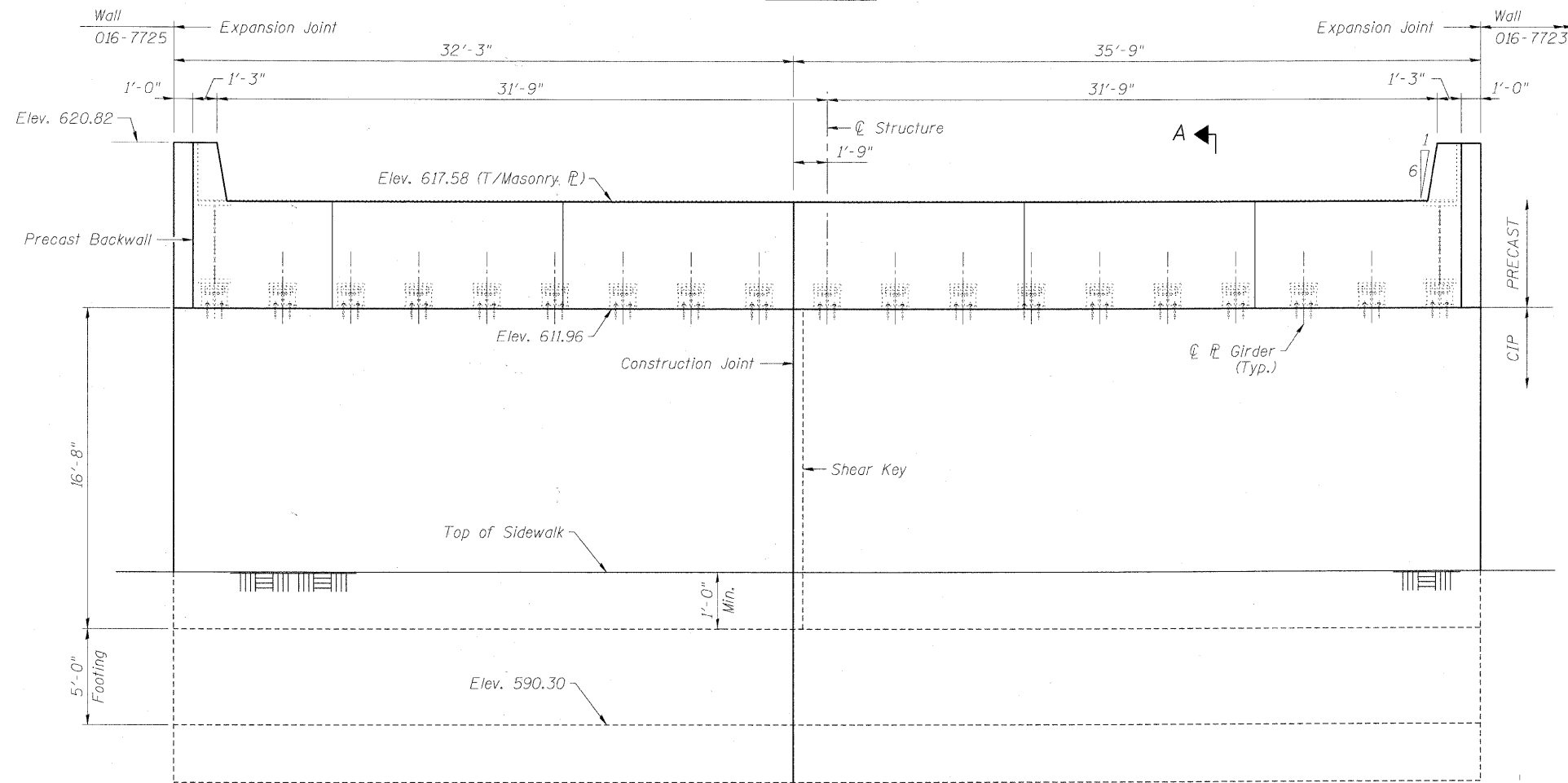
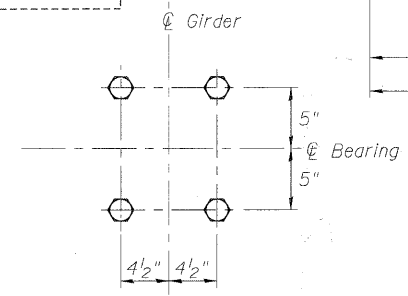


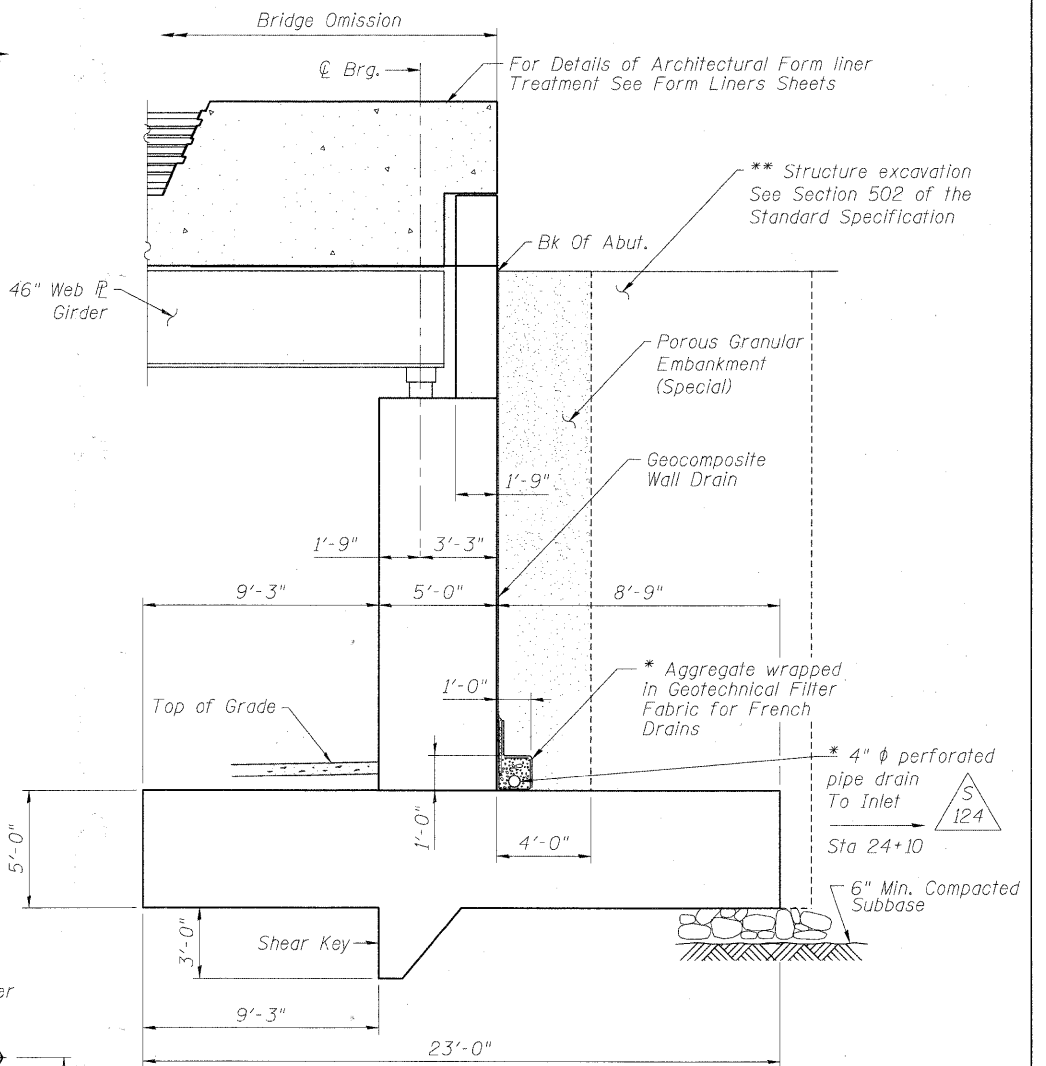
TOP PLAN



SOUTH ABUTMENT ELEVATION



ANCHOR BOLT LAYOUT



SECTION A-A

*Included in cost of "Pipe Underdrains for Structures"
 ** Backfill remainder of structure excavation and overexcavation with same material specified for roadway embankment

- Notes:
1. For Form Liner Rustification Details, See Architectural Sheets.
 2. For Bar Splicer Details, See Sheet No. 9 of 65.
 3. For Precast Backwall Details, See Sheet No. 8 of 65.
 4. For Steel Masonry Plate Details, See Sheet No. 8 of 65.
 5. Provide 3" x 1'-6" shear key at abutment stem construction joint.
 6. Roughen surfaces of horizontal construction joints (typ.).
 7. Pipe Underdrain to connect to Catch Basin. See Drainage Drawings.

FILE NAME = P:\GIS\56877\080 CAD\001 Drawings\Sheets\Structural\016-7721\IDOT.shd04-5-Reinforcement.dgn



USER NAME = kwtam	DESIGNED - BMR	REVISED -
PLOT SCALE = 0.1" / 1'-0"	DRAWN - COM	REVISED -
PLOT DATE = 3/16/2011	CHECKED - DD	REVISED -
DATE = 11/23/2010	REVISED -	

STATE OF ILLINOIS
 DEPARTMENT OF TRANSPORTATION

SOUTH ABUTMENT STRUCTURE NO. 016-7721		
SCALE: NONE	SHEET NO. 4 OF 65 SHEETS	STA. TO STA.

F.A.U. RTE.	SECTION	COUNTY	TOTAL SHEETS	SHEET NO.
1537	06-00050-00-GS	COOK	209	98
CONTRACT NO. 63556				
FED. ROAD DIST. NO. 1 ILLINOIS FED. AID PROJECT CRE-9003(709)				