

STANDARD BAR SPLICER ASSEMBLY

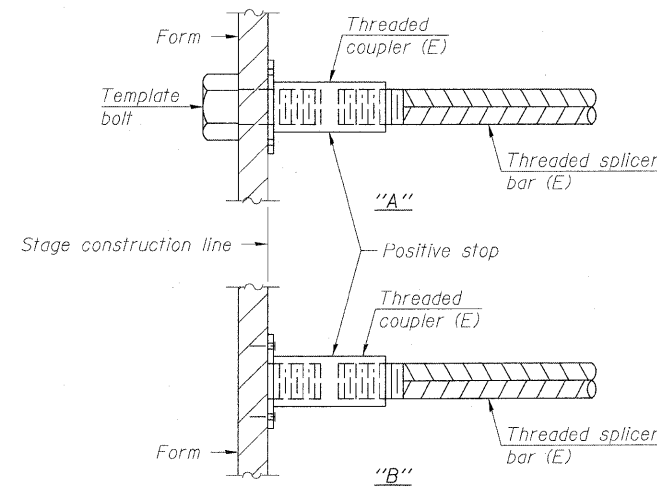
| Bar size to be spliced | Minimum Lap Lengths | | | | |
|------------------------|---------------------|---------|---------|---------|---------|
| | Table 1 | Table 2 | Table 3 | Table 4 | Table 5 |
| 3, 4 | 1'-5" | 1'-11" | 2'-1" | 2'-4" | 2'-3" |
| 5 | 1'-9" | 2'-5" | 2'-7" | 2'-11" | 2'-10" |
| 6 | 2'-1" | 2'-11" | 3'-1" | 3'-6" | 3'-4" |
| 7 | 2'-9" | 3'-10" | 4'-2" | 4'-8" | 4'-6" |
| 8 | 3'-8" | 5'-1" | 5'-5" | 6'-2" | 5'-10" |
| 9 | 4'-7" | 6'-5" | 6'-10" | 7'-9" | 7'-5" |

- Table 1: Black bar, 0.8 Class C
- Table 2: Black bar, Top bar lap, 0.8 Class C
- Table 3: Epoxy bar, 0.8 Class C
- Table 4: Epoxy bar, Top bar lap, 0.8 Class C
- Table 5: Epoxy bar, Top bar lap, Class B

Threaded splicer bar length = min. lap length + 1 1/2" + thread length

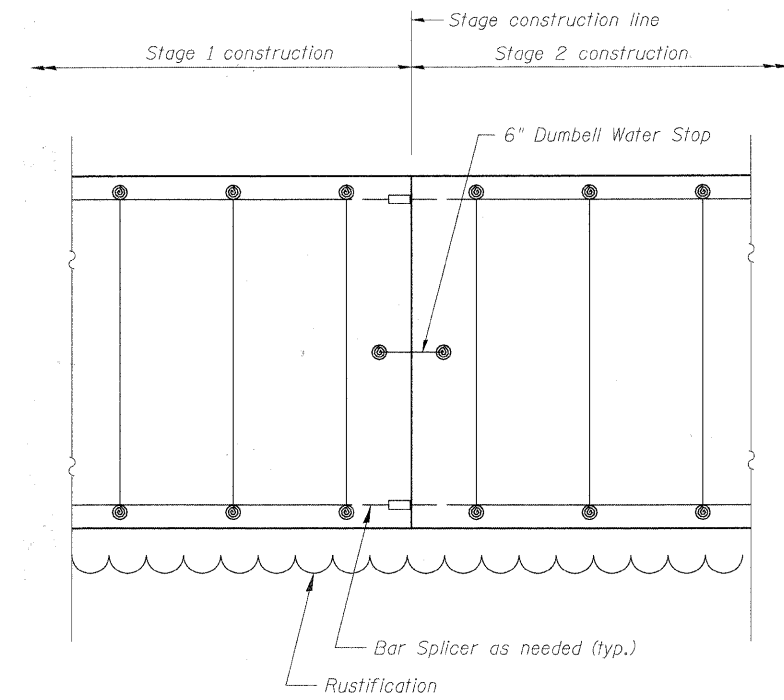
* Epoxy not required on Bar Splicer Assembly components used in conjunction with black bars.

| Location | Bar size | No. assemblies required | Table for minimum lap length |
|--------------------|----------|-------------------------|------------------------------|
| S. Abut. Shear Key | #5 | 6 | 2'-7" |
| S. Abut. Stem | #6 | 36 | 3'-1" |
| S. Abut. Footing | #7 | 48 | 4'-2" |
| N. Abut. Shear Key | #5 | 6 | 2'-7" |
| N. Abut. Stem | #6 | 36 | 3'-1" |
| N. Abut. Footing | #7 | 56 | 4'-2" |



INSTALLATION AND SETTING METHODS

- "A" : Set bar splicer assembly by means of a template bolt.
- "B" : Set bar splicer assembly by nailing to wood forms or cementing to steel forms.
- (E) : Indicates epoxy coating.



**CONSTRUCTION JOINT DETAILS
ABUTMENT STEM**

NOTES

Splicer bars shall be deformed with threaded ends and have a minimum 60 ksi yield strength.

All reinforcement shall be lapped and tied to the splicer bars. Bar splicer assemblies shall be epoxy coated according to the requirements for reinforcement bars. See Section 508 of the Standard Specifications.

See approved list of bar splicer assemblies.

FILE NAME = P:\68155677\0200_CD\01\001_Drawing\Sheets\Structure\1016-7721_IDDT.shu09.Bar_Splicer_Assembly_Detail.dwg



USER NAME = kritzm
PLOT SCALE = 0:1' = 1/4" / in.
PLOT DATE = 3/16/2011

DESIGNED - BMR
DRAWN - COM
CHECKED - DD
DATE - 11/23/2010

REVISED -
REVISED -
REVISED -
REVISED -

**STATE OF ILLINOIS
DEPARTMENT OF TRANSPORTATION**

**BAR SPLICER ASSEMBLY DETAIL
STRUCTURE NO. 016-7721**

SCALE: NONE SHEET NO. 9 OF 65 SHEETS STA. TO STA.

| F.A.U. RTE. | SECTION | COUNTY | TOTAL SHEETS | SHEET NO. |
|--|----------------|--------|--------------------|-----------|
| 1537 | 06-00050-00-GS | COOK | 209 | 103 |
| FED. ROAD DIST. NO. 1 ILLINOIS FED. AID PROJECT CRE-90031709 | | | CONTRACT NO. 63556 | |