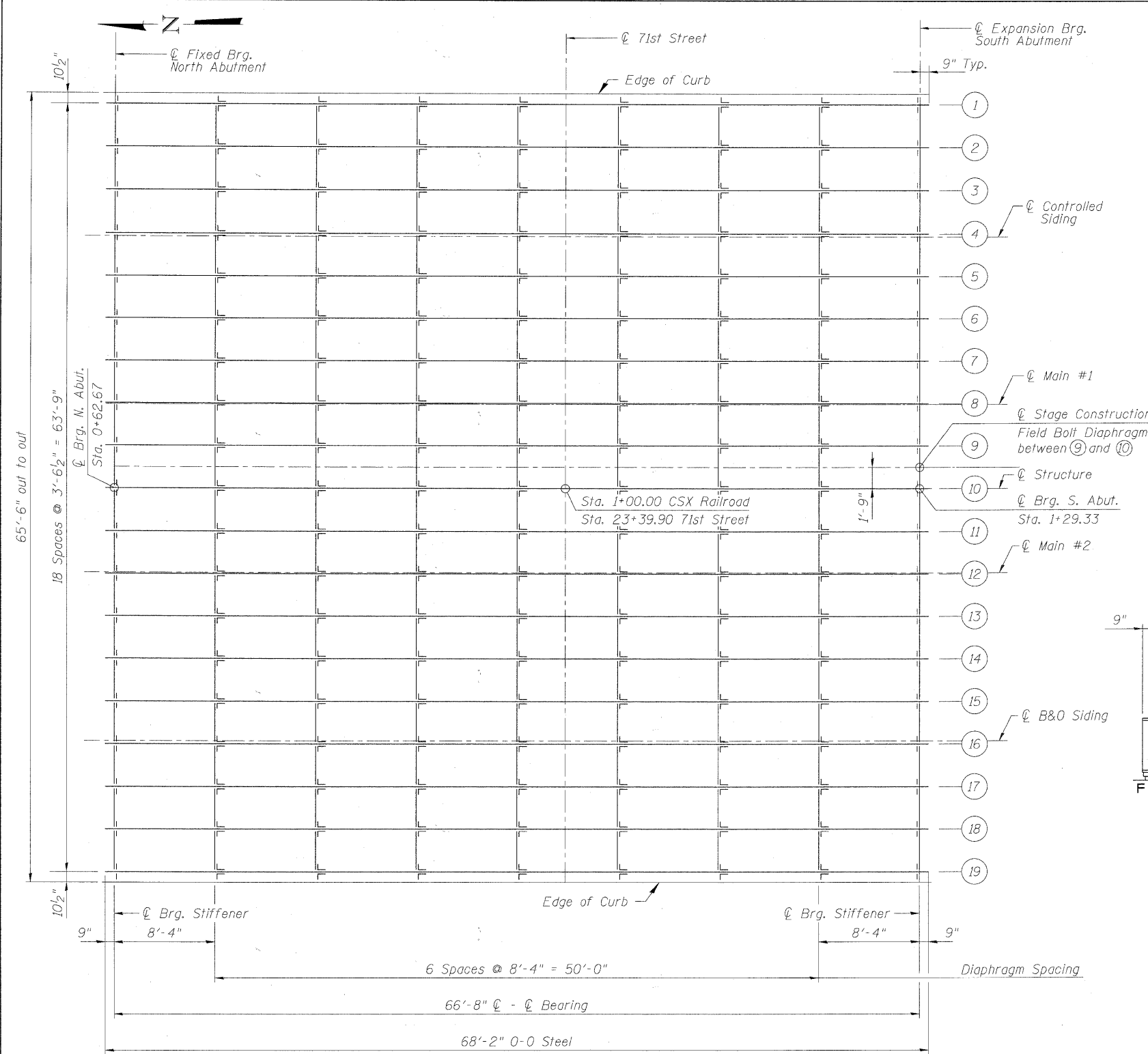


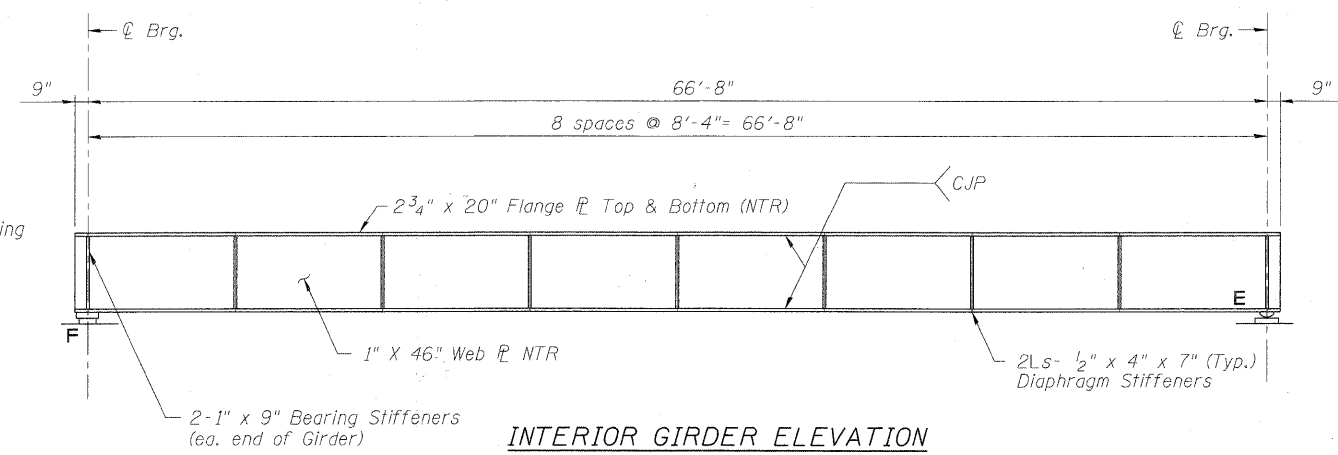
DESIGN DATA PER GIRDER

MOMENT		SHEAR		BEARING ON CONCRETE	
DESCRIPTION		DESCRIPTION		DESCRIPTION	
DEAD LOAD	1,150 (k)	DEAD LOAD	69 (kips)	TOTAL REACTION	292 (kips)
LIVE LOAD	2,245 (k)	LIVE LOAD	152 (kips)	BRG. AREA FURNISHED	342 (in. <sup>2</sup> )
IMPACT	1,044 (k)	IMPACT	71 (kips)	MAXIMUM BRG. PRESSURE	917 (psi)
TOTAL	4,439 (k)	TOTAL	292 (kips)		
SECTION		WEB SHEAR	5.74 (ksi)		
WEB	1"x46"	END STIFFENER COLUMN AREA REQUIRED	6.34 (in. <sup>2</sup> )		
FLANGE	2 <sup>3</sup> / <sub>4</sub> "x20"	SECTION	2-1"x9"		
I FURNISHED GROSS	73,536 (in. <sup>4</sup> )	END STIFFENER COLUMN AREA FURNISHED	28 (in. <sup>2</sup> )		
I FURNISHED NET	71,489 (in. <sup>4</sup> )				
ALLOWABLE MAX. TENSILE STRESS IN FLANGE	27.5 (ksi)				
ACTUAL MAX. TENSILE STRESS IN FLANGE	19.1 (ksi)				
ALLOWABLE LL DEFLECTION	1.25 (in.)				
ACTUAL LL DEFLECTION	1.23 (in.)				

NTR = Notch Toughness Requirements

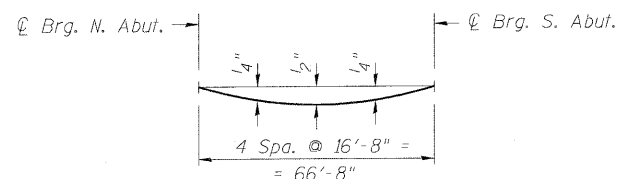


FRAMING PLAN



INTERIOR GIRDER ELEVATION

Note:  
 Web Splice and Flange Splice shall be Pre Qualified Complete Penetration Butt Welds.  
 Engineer to Approve Type and Location of Splices.  
 Flange to Web Connections shall be Pre Qualified Full Penetration Weld Approved by the Engineer prior to fabrication.



DEAD LOAD DEFLECTION DIAGRAM

FILE NAME = P:\60155877\002\_CAD\001\_Drawing\Sheets\Structures\016-7721\DOT\_sht18\_Framing.dgn