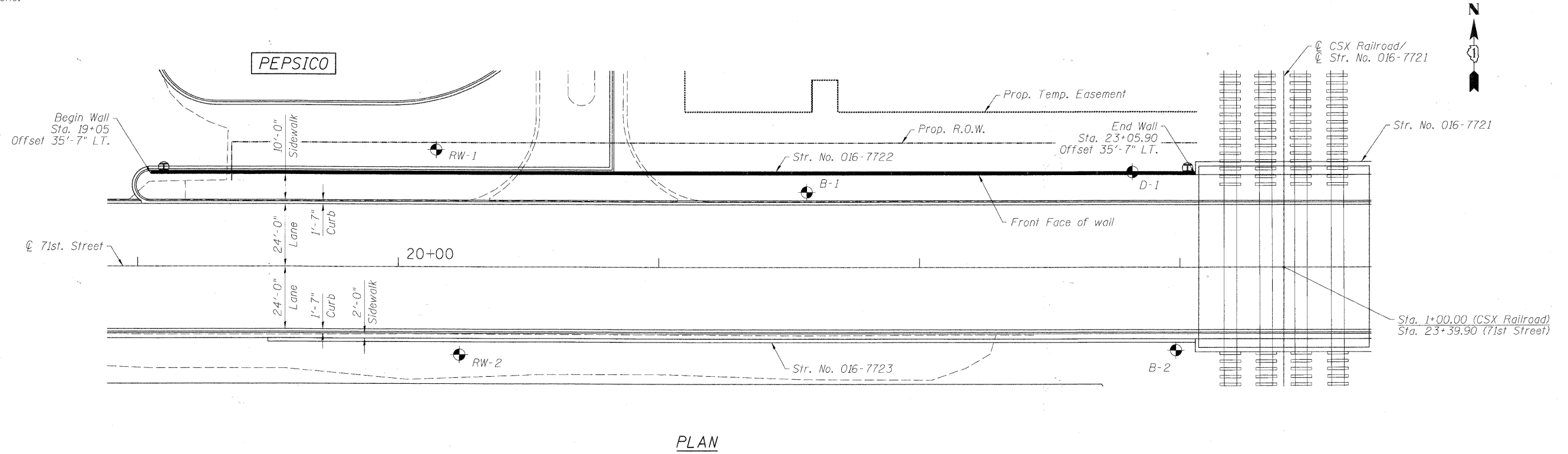
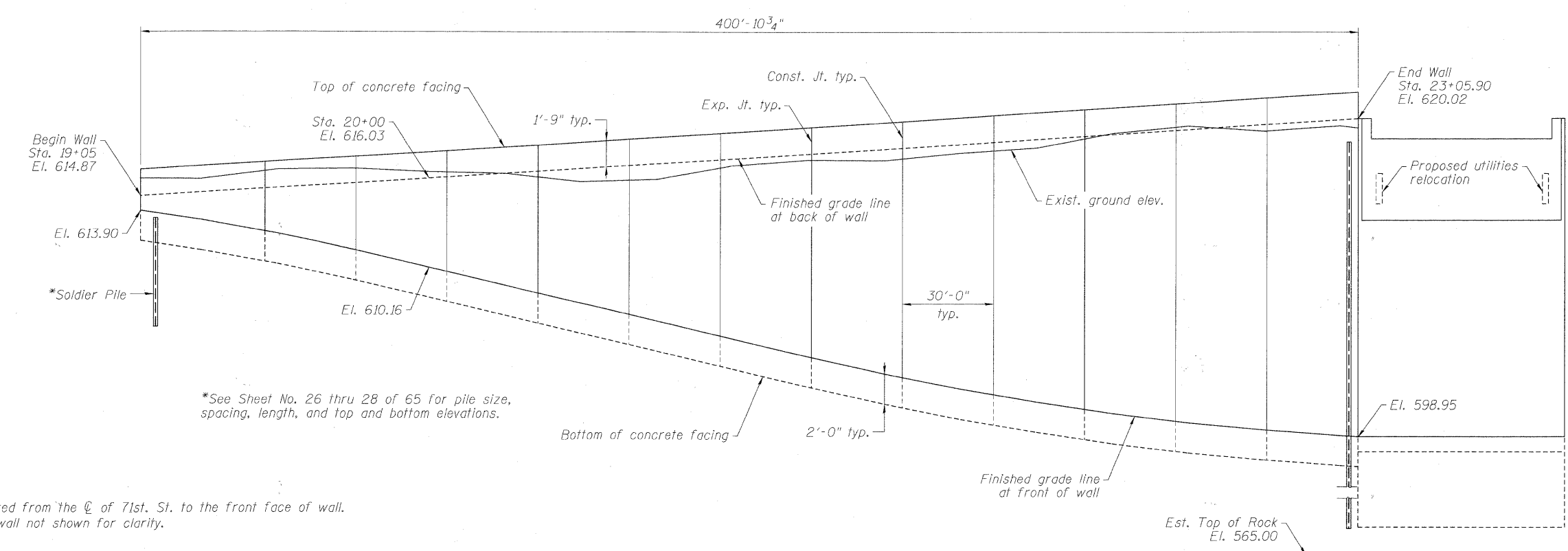


Bench Mark: BWV249 Square cut on N. conc. base of RR signal mast arm base on S. row of 71st Street 1/2 mile West of Harlem Avenue. Elev. 620.57

Existing Structure: None.



PLAN



ELEVATION  
(Looking @ front face of wall)

**NOTES:**

- Offsets are measured from the  $\odot$  of 71st. St. to the front face of wall.
- Railing on top of wall not shown for clarity.

\*See Sheet No. 26 thru 28 of 65 for pile size, spacing, length, and top and bottom elevations.

FILE NAME = P:\06155877\0600\_CAD\Drawings\Sheets\Structure\016-7722\_IDOT-shh25-09&E.dgn



USER NAME = debzeid	DESIGNED - DD	REVISED -
PLOT SCALE = 0:1.0000' = 1" / 10'	DRAWN - DD	REVISED -
PLOT DATE = 2/17/2011	CHECKED - EJO	REVISED -
	DATE - 10/11/2010	REVISED -

STATE OF ILLINOIS  
DEPARTMENT OF TRANSPORTATION

GENERAL PLAN & ELEVATION  
STRUCTURE NO. 016-7722

SCALE: SHEET NO. 25 OF 65 SHEETS STA. TO STA.

F.A.U. RTE. 1537	SECTION 06-00050-00-GS	COUNTY COOK	TOTAL SHEETS 209	SHEET NO. 115
CONTRACT NO. 63556			ILLINOIS FED. AID PROJECT	