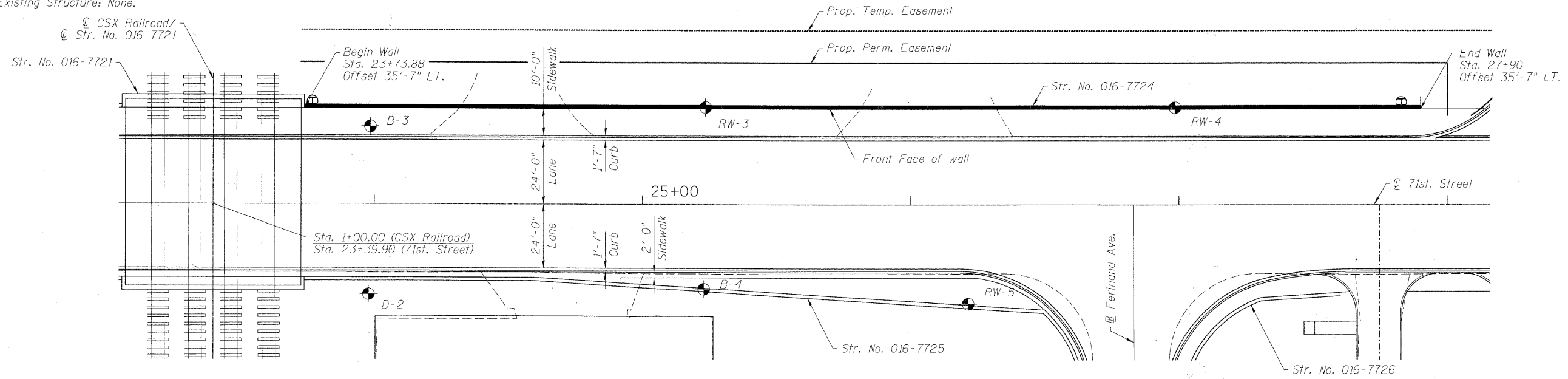


Bench Mark: BVW249 Square cut on N. conc. base of RR signal mast arm base on S. row of 71st Street 1/2 mile West of Harlem Avenue. Elev. 620.57

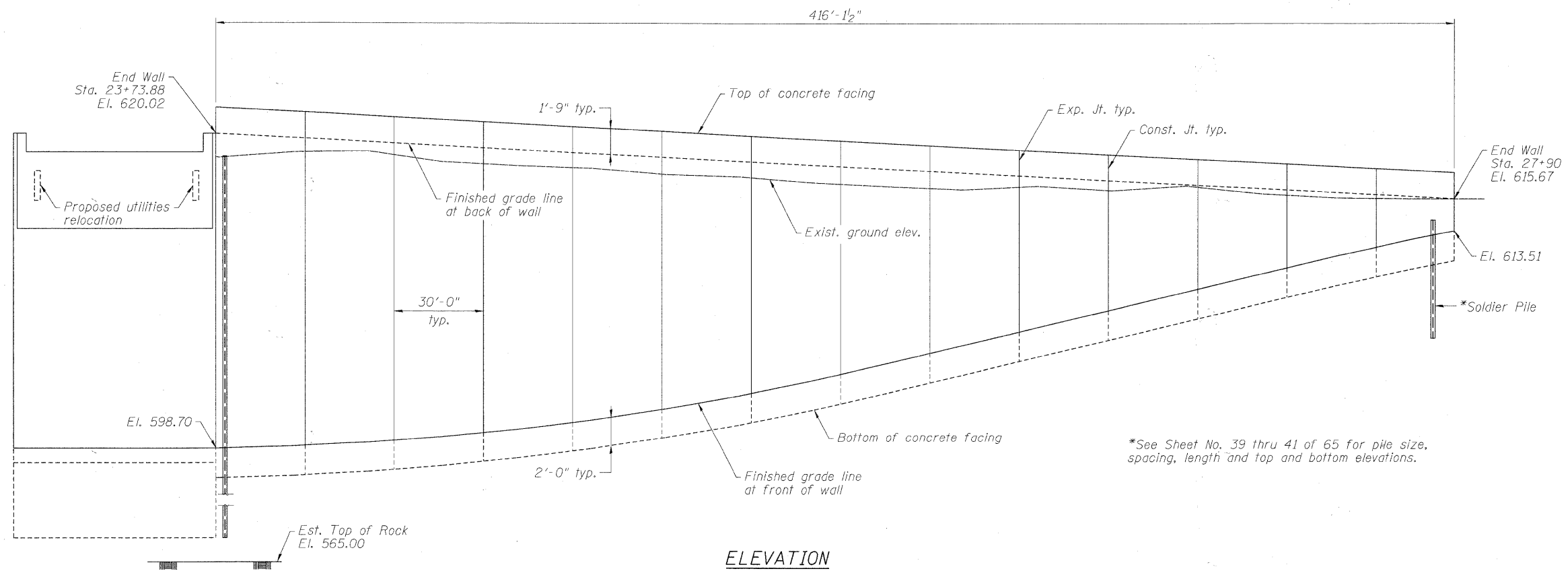
Existing Structure: None.



PLAN

**NOTES:**

1. Offsets are measured from the  $\odot$  of 71st. St. to the front face of wall.
2. Railing on top of wall not shown for clarity.



ELEVATION  
(Looking @ front face of wall)

\*See Sheet No. 39 thru 41 of 65 for pile size, spacing, length and top and bottom elevations.

FILE NAME = P:\A6056877\_0200\_CAD\001\_Drawing\Shimada\Structural\016-7724\_IDDT\_mh138-0P&E.dgn



|                                |                   |           |
|--------------------------------|-------------------|-----------|
| USER NAME = daboiscd           | DESIGNED - DD     | REVISED - |
| PLOT SCALE = 0.1/0.020 1' / 1" | DRAWN - DD        | REVISED - |
| PLOT DATE = 2/17/2011          | CHECKED - EJO     | REVISED - |
|                                | DATE - 10/11/2010 | REVISED - |

STATE OF ILLINOIS  
DEPARTMENT OF TRANSPORTATION

GENERAL PLAN & ELEVATION  
STRUCTURE NO. 016-7724

SCALE: SHEET NO. 38 OF 65 SHEETS STA. TO STA.

| F.A.U. RTE.        | SECTION        | COUNTY | TOTAL SHEETS              | SHEET NO. |
|--------------------|----------------|--------|---------------------------|-----------|
| 1537               | 06-00050-00-GS | COOK   | 209                       | 128       |
| CONTRACT NO. 63556 |                |        | ILLINOIS FED. AID PROJECT |           |