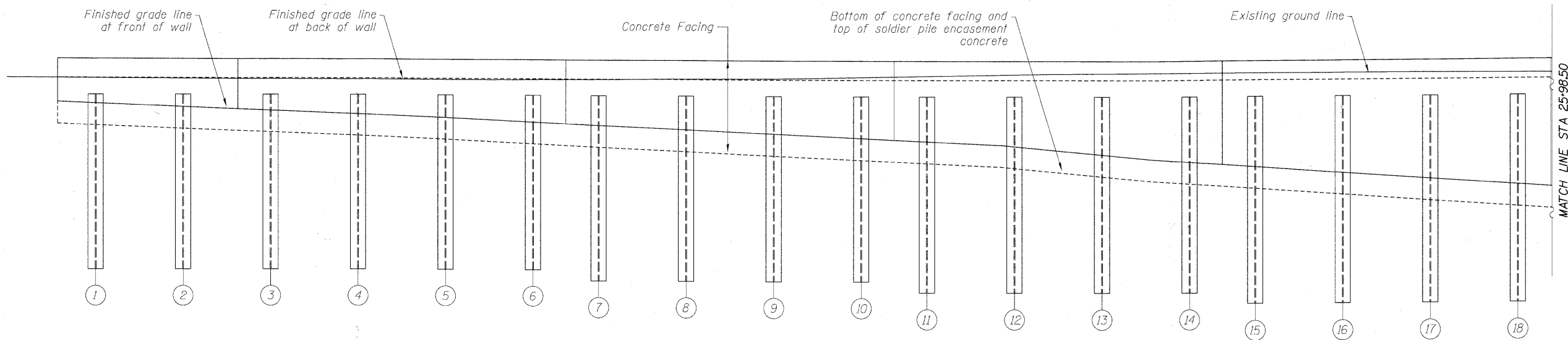


**PLAN**

(All dimensions are measured along front face of wall)



**ELEVATION**

(Unfolded Elevation View)

**SHAFT SIZES**

PILE SIZE	SHAFT EXCAVATION SIZE
W36x302	4'-0" $\phi$
W36x282	4'-0" $\phi$
W33x201	3'-6" $\phi$
W21x147	2'-6" $\phi$
W21x101	2'-6" $\phi$

**PILE SUMMARY**

PILE NO.	PILE SIZE	LENGTH	BOTTOM ELEVATION	TOP ELEVATION	PILE NO.	PILE SIZE	LENGTH	BOTTOM ELEVATION	TOP ELEVATION	PILE NO.	PILE SIZE	LENGTH	BOTTOM ELEVATION	TOP ELEVATION
1	W21x101	15.00	599.76	614.76	7	W21x101	17.00	597.66	614.66	13	W21x101	18.00	596.57	614.57
2	W21x101	15.00	599.74	614.74	8	W21x101	17.00	597.65	614.65	14	W21x101	18.00	596.58	614.58
3	W21x101	16.00	598.73	614.73	9	W21x101	17.00	597.63	614.63	15	W21x147	22.00	592.63	614.63
4	W21x101	16.00	598.71	614.71	10	W21x101	17.00	597.61	614.61	16	W21x147	22.00	592.70	614.70
5	W21x101	16.00	598.69	614.69	11	W21x101	18.00	596.60	614.60	17	W21x147	22.00	592.77	614.77
6	W21x101	16.00	598.67	614.67	12	W21x101	18.00	596.59	614.59	18	W21x147	22.00	592.83	614.83

FILE NAME = P:\69155377\000\_CAD\001\_Drawing\Sheet\Structural\016-7725\_1001-shft46-1.dwg P&E lrdjn



USER NAME = dbeziad	DESIGNED - DD	REVISED -
PLOT SCALE = 0:1.0000 ' = 1/8" in.	DRAWN - DD	REVISED -
PLOT DATE = 2/17/2011	CHECKED - EJO	REVISED -
	DATE - 11/22/2010	REVISED -

**STATE OF ILLINOIS  
DEPARTMENT OF TRANSPORTATION**

**SOLDIER PILE PLAN & ELEVATION I  
STRUCTURE NO. 016-7725**

SCALE: SHEET NO. 46 OF 65 SHEETS STA. 58+65.00 TO STA. 25+98.50

F.A.U. RTE.	SECTION	COUNTY	TOTAL SHEETS	SHEET NO.
1537	06-00050-00-GS	COOK	209	136
CONTRACT NO. 63556				
ILLINOIS FED. AID PROJECT				