

DETAIL 1
(SEE NOTE 4)

- NOTE:**
1. THE CONTRACTOR SHALL VERIFY WITH THE ENGINEER (VILLAGE OF SCHAUMBURG) ELECTRIC POWER TRANSFORMER LOCATION, CIRCUIT CABLE TYPE AND SIZE AND CONNECTION WITH LIGHTING UNIT
 2. THE CONTRACTOR SHALL VERIFY WITH THE ENGINEER (VILLAGE OF SCHAUMBURG) LUMINAIRE LAMP WATTAGE TYPE OF BALLAST, VOLTAGE OF BALLAST.
 3. ALL EXISTING ELECTRICAL CIRCUIT IMPROVEMENT SHALL BE CO-ORDINATED WITH THE ENGINEER (VILLAGE OF SCHAUMBURG) . THE CONTRACTOR MUST OBTAIN WRITTEN APPROVAL FROM THE ENGINEER (VILLAGE OF SCHAUMBURG) FOR CIRCUIT IMPROVEMENT
 4. FOUR EXISTING LIGHTING UNITS SHOWN IN DETAIL #1 SHALL BE RECONNECTED TO NEW CONTROLLER #1. FOR DETAILS SEE DWG E-5 OF E-15
 5. EXISTING LIGHTING UNITS ON ROOSEVELT DRIVE, SHOWN IN DETAIL #2 SHALL BE RECONNECTED TO NEW CONTROLLER #2. FOR DETAILS SEE DWG E-7 OF E-15

GROUND ROD:

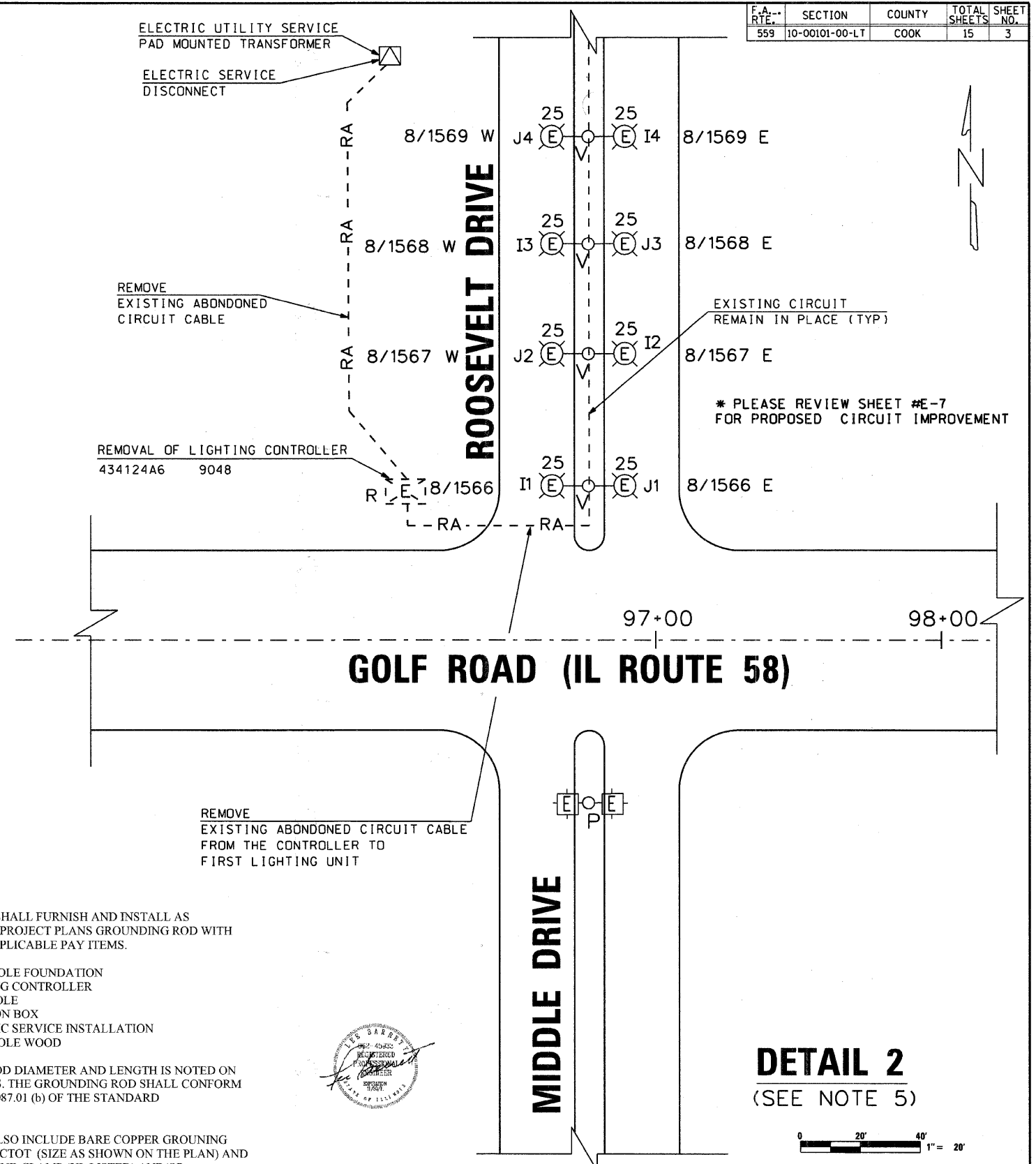
THE CONTRACTOR SHALL FURNISH AND INSTALL AS IDENTIFIED ON THE PROJECT PLANS GROUNDING ROD WITH THE FOLLOWING APPLICABLE PAY ITEMS.

1. #836 - LIGHT POLE FOUNDATION
2. #825 - LIGHTING CONTROLLER
3. #814 - HANDHOLE
4. #813 - JUNCTION BOX
5. #804 - ELECTRIC SERVICE INSTALLATION
6. #830 - LIGHT POLE WOOD

THE GROUNDING ROD DIAMETER AND LENGTH IS NOTED ON THE PROJECT PLANS. THE GROUNDING ROD SHALL CONFORM TO THE ARTICLE #1087.01 (b) OF THE STANDARD SPECIFICATIONS.

THIS ITEM SHALL ALSO INCLUDE BARE COPPER GROUNDING ELECTRODE CONDUCTOT (SIZE AS SHOWN ON THE PLAN) AND MECHANICAL GROUND CLAMP (UL LISTED) AND/OR EXOTHERMIC WELD CONNECTION FOR CONTINUOAS GROUNDING (NEC ARTICLE #250) FOR ELECTRIC POWER SERVICE AND SYSTEM EQUIPMENT.

THE GROUNDING ROD SHALL BE INSTALLED AS SHOWN IN THE CONTRACT PLANS AND AS DIRECTED BY THE ENGINEER. MATERIAL COST OF GROUNDING ROD WITH ATTACHED APPURTENANCES AND LABOR COST FOR INSTALLATION SHALL NOT BE PAID SEPARATELY BUT SHALL BE INCLUDED WITH THE ABOVE ASSOCIATED PAY ITEMS.



DETAIL 2
(SEE NOTE 5)



3/7/2011

C:\SUNJOY\Projects\Village of Schaumburg\Golf Road\circuit_dwg\ing.dgn



Sunjoy Inc.
Area Lighting
Consulting Engineers
212 TIMBERCREST DRIVE
SCHAUMBURG, ILLINOIS
60193-1572

REVISIONS	
NAME	DATE

VILLAGE OF SCHAUMBURG, ILLINOIS
DEPARTMENT OF ENGINEERING AND PUBLIC WORKS
IL ROUTE 58 (GOLF ROAD) LIGHTING IMPROVEMENTS
BASSWOOD ROAD TO I-290 UNDERPASS
ELECTRIC CIRCUIT MAINTAINED BY THE VILLAGE OF SCHAUMBURG
EXISTING LIGHTING CIRCUITS DETAILS
1. COMMONS 2. ROOSEVELT DRIVE

SCALE: 1" = 20'
DATE: 10-05-09

DRAWN BY: HKQ
CHECKED BY: JS