

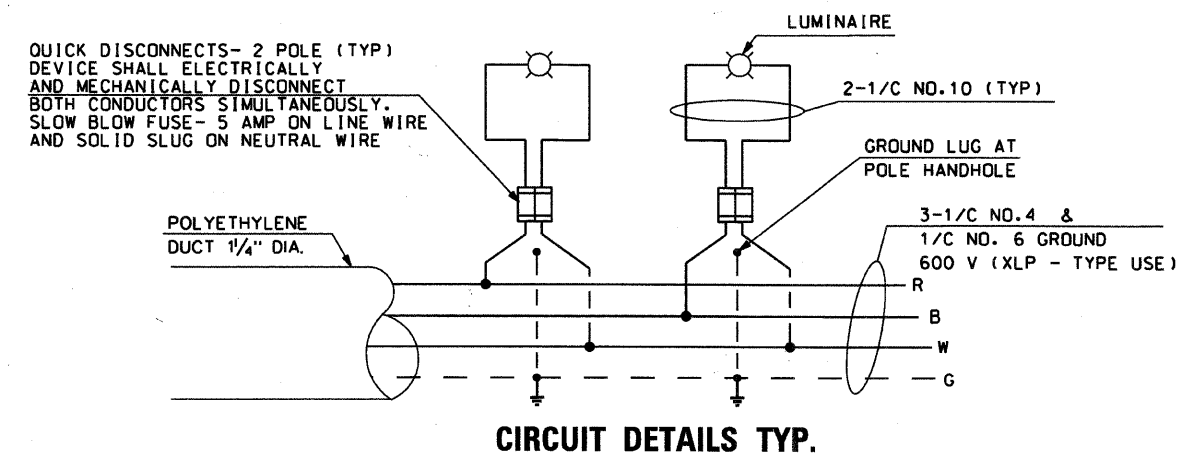
- LEGEND**
- LUMINAIRE ON RED CIRCUIT
  - LUMINAIRE ON BLACK CIRCUIT
  - CONTROL CABINET
  - LUMINAIRE
  - SLOW BLOW FUSE- 5 AMP ON LINE WIRE AND SOLID SLUG ON NEUTRAL WIRE
  - PROPOSED CIRCUIT 3 1/2" \*4 & 1/2" \*6 GND 600 V (XLP-TYPE USE)
  - CONNECTION

**CIRCUIT LOAD**  
CONTROLLER-200 AMP 240/480 VOLT, 1 PHASE

CIRCUIT RED	AMPERE @240 V	WATTS	CIRCUIT BLACK	AMPERE @240 V	WATTS
A	24	5,616	B	26	6,084
C	22	5,148	D	24	5,616
E	14	3,276	F	12	2,808
G	12	2,808	H	14	3,276
I	2.6	600	J	2.6	600
K	SPARE		L	SPARE	
TOTAL	74.6	17,448	TOTAL	78.6	18,384

240 VOLT LINE  
400 WATT HPS LAMP: 2.00 AMPERE / 468 WATT  
250 WATT HPS LAMP: 2.3 AMPERE / 300 WATT

**ONE LINE CIRCUIT DIAGRAM**



**CIRCUIT DETAILS TYP.**

3/7/2011

C:\SUNJOY\Projects\Village of Schaumburg\Golf Road\V7\_SL.D01.dgn

REVISIONS	
NAME	DATE

VILLAGE OF SCHAUMBURG, ILLINOIS  
DEPARTMENT OF ENGINEERING AND PUBLIC WORKS  
IL ROUTE 58 (GOLF ROAD) LIGHTING IMPROVEMENTS  
**BASSWOOD ROAD TO I-290 UNDERPASS**  
**ONE LINE CIRCUIT DIAGRAM LIGHTING CONTROLLER AT COMMONS DRIVE**

SCALE: NONE  
DATE: 10-05-09  
DRAWN BY: HKQ  
CHECKED BY: JS

