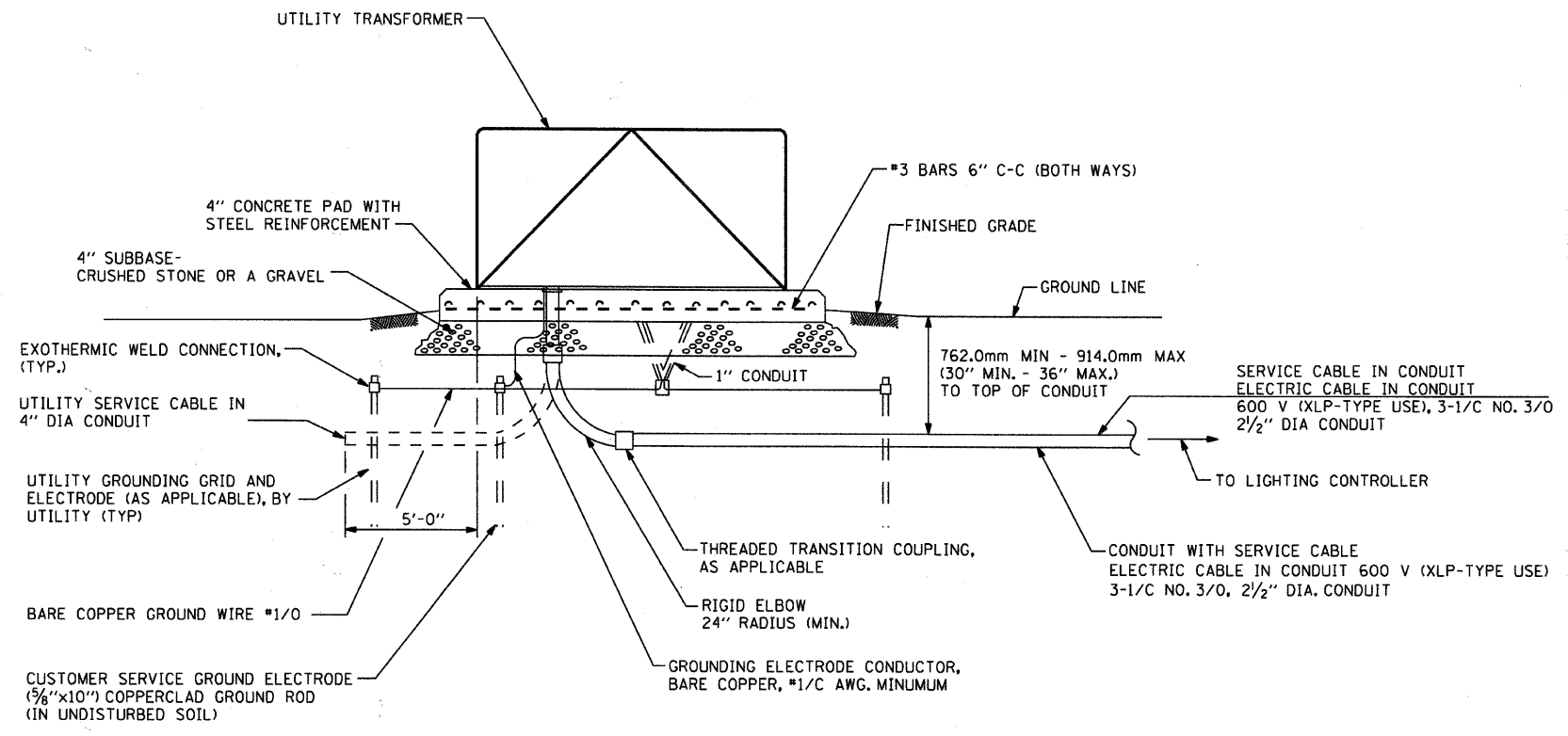


NOTES:

1. THE PAY ITEM - "ELECTRIC UTILITY SERVICE CONNECTION" SHALL CONSIST OF PAYMENT FOR WORK PERFORMED BY THE ELECTRIC UTILITY COMPANY IN PROVIDING OR MODIFYING ELECTRIC SERVICE AS INDICATED.
2. THE PAY ITEM- "ELECTRIC SERVICE INSTALLATION" SHALL CONSIST OF ALL MATERIAL AND LABOR REQUIRED TO EXTEND, CONNECT OR MODIFY THE ELECTRIC SERVICE AS INDICATED OR SPECIFIED, WHICH IS OVER AND ABOVE THE WORK PERFORMED BY UTILITY COMPANY. THE SERVICE METER SOCKET, AS APPLICABLE, MOUNTED ELSEWHERE, SHALL BE INCLUDED IN THIS PAY ITEM.
3. SERVICE VOLTAGE SHALL BE AS INDICATED ELSEWHERE IN THE PROJECT DRAWINGS.
4. ELECTRIC SERVICE SPAN BETWEEN THE CONTROLLER AND UTILITY TRANSFORMER SHALL NOT EXCEED 250 FEET.
5. CONDUIT FOR SERVICE CABLE:
 - 5.1 CONDUIT DIAMETER AND CONDUIT FITTINGS SHALL BE SIZED WITH WIRE GAUGE AND MAXIMUM NUMBER OF CONDUCTORS PERMITTED BY NEC.
 - 5.2 CONDUIT FOR SERVICE CABLE SHALL BE AS INDICATED AND SHALL BE MEASURED SEPARATELY FOR PAYMENT.
 - 5.3 PVC COATED GALVANIZED STEEL CONDUIT AND CONDUIT FITTINGS OF THE SAME TYPE SHALL BE CAREFULLY INSTALLED WITH MANUFACTURER'S RECOMMENDED TOOLS AND PROCEDURES. DAMAGE TO CONDUIT SHALL BE REPAIRED WITH COMPATIBLE PVC TOUCH-UP MATERIAL TO THE SATISFACTION OF THE ENGINEER OR THE DAMAGED MATERIAL SHALL BE REPLACED AT NO ADDITIONAL COST.
 - 5.4 THE COUPLING (CONDUIT FITTING) SHALL BE A METALIC TO NON-METALIC ADAPTER BETWEEN STEEL CONDUIT AND PVC CONDUIT.
 - 5.5 CONCRETE COVER OVER THE ENCASED RACEWAY RUN SHALL BE A MINIMUM 3 INCH ALL AROUND.
6. PLANS AND DETAILS INDICATE THE GENERAL NATURE AND REQUIREMENTS OF THE UTILITY SERVICE WITHOUT EVERY ACCESSORY AND ATTACHMENT. THE CONTRACTOR IS OBLIGED TO COMPLY WITH THE REQUIREMENTS OF THE UTILITY COMPANY. THE CONTRACTOR SHALL COORDINATE IN FURNISHING ALL MATERIAL AND WORK NOT PROVIDED BY THE UTILITY FOR COMPLETING ELECTRIC SERVICE INSTALLATION.
7. THE CONTRACTOR SHALL OBTAIN INSPECTION AND APPROVAL BY THE ENGINEER AND UTILITY COMPANY BEFORE BACKFILL AND/OR ENCLOSING ELECTRIC SERVICE INSTALLATION.



**PROPOSED SERVICE INSTALLATION WITH TRANSFORMER FOUNDATION DETAIL
TRANSFORMER - PAD MOUNTED**

3/7/2011

C:\SUNJOY\Projects\Village of Schaumburg\Golf Road\bf_el_02.dgn



Sunjoy Inc.
Area Lighting
Consulting Engineers
212 TIMBERCREST DRIVE
SCHAUMBURG, ILLINOIS
60193-1572

REVISIONS	
NAME	DATE

VILLAGE OF SCHAUMBURG, ILLINOIS
DEPARTMENT OF ENGINEERING AND PUBLIC WORKS
IL ROUTE 58 (GOLF ROAD) LIGHTING IMPROVEMENTS
BASSWOOD ROAD TO I-290 UNDERPASS
ELECTRIC SERVICE INSTALLATION
TRANSFORMER MOUNTED ON PAD
SCALE: NONE
DATE: 10-05-09
DRAWN BY: HKQ
CHECKED BY: JS