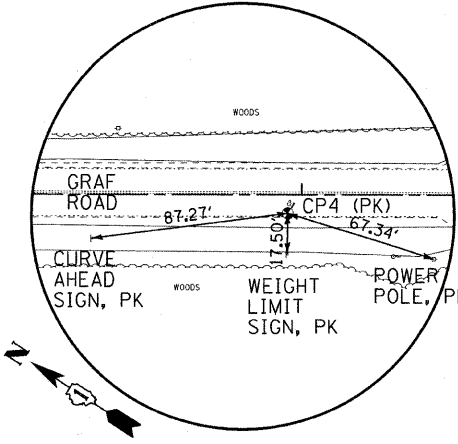


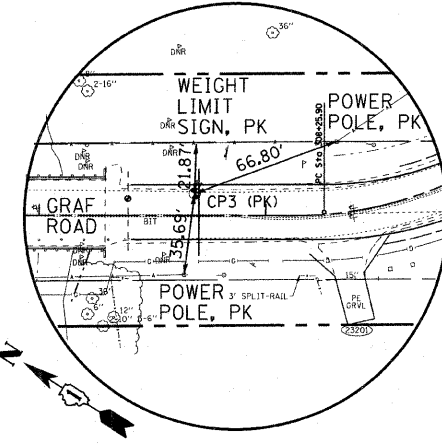
HORIZONTAL CONTROL

P.O.T. #3980 STA 304+00
GRAF ROAD
N 2103770.222, E 898673.114
ELEV 885.33



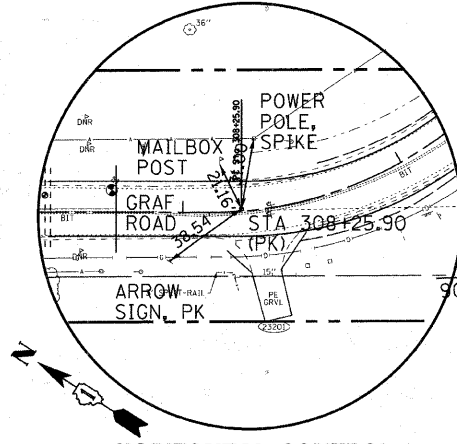
TIE-POINT

CP #4 STA 305+93.82
GRAF ROAD
N 2103602.301, E 898770.406



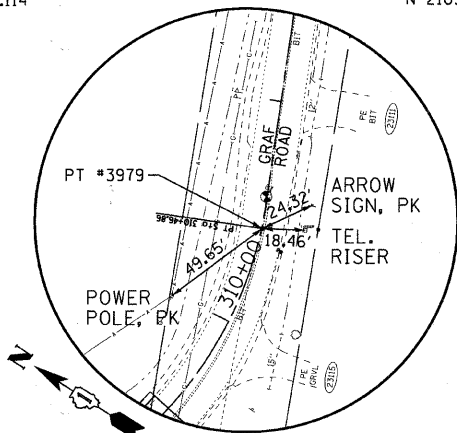
TIE-POINT

CP #3 STA 307+68.61
GRAF ROAD
N 2103464.866, E 898879.847



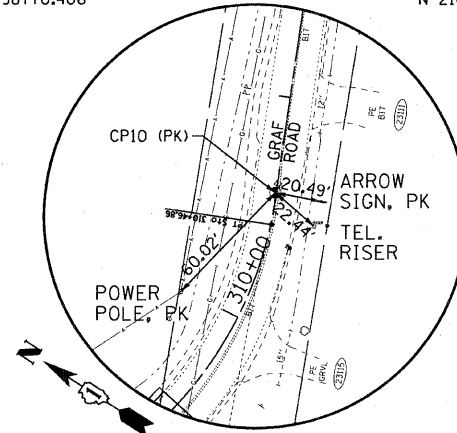
HORIZONTAL CONTROL

PC #3978 STA 308+25.90
GRAF ROAD
N 2103412.365, E 898904.017
ELEV 886.19



HORIZONTAL CONTROL

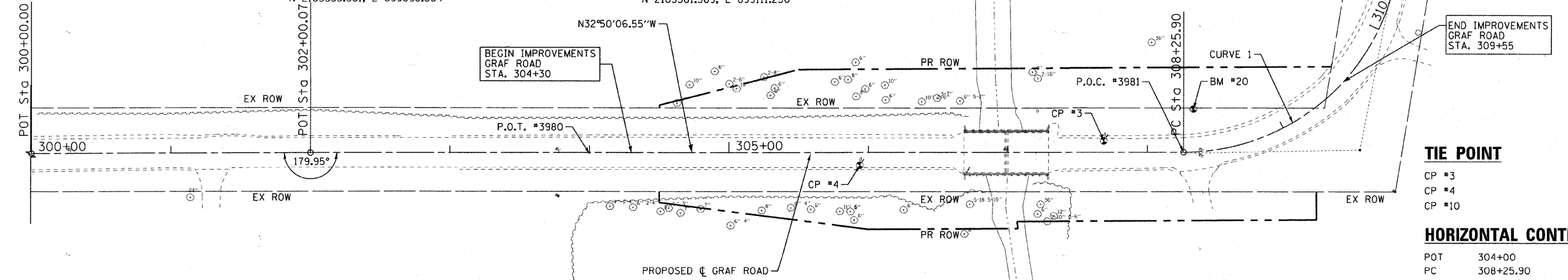
PT #3979 STA 310+46.86
GRAF ROAD
N 2103355.381, E 899098.564



TIE-POINT

CP #10 STA 310+60.98
GRAF ROAD
N 2103361.569, E 899111.256

CURVE 1
PI STA. = 309+59.87
 $\Delta = 81^\circ 40' 43''$ (LT)
D = $36^\circ 57' 54''$
R = 155.00'
T = 133.98'
L = 220.96'
E = 49.88'
 $e = -7.5\%$
T.R. = 64.31'
S.E. RUN = 128.63'
P.C. STA = 308+25.90
P.T. STA = 310+46.86



TIE POINT

CP #3
CP #4
CP #10

HORIZONTAL CONTROL

POT 304+00
PC 308+25.90
PT 310+46.86

BENCHMARKS

CP #3 - ELEV=886.23 PK NAIL SET IN HMA.
CP #4 - ELEV=885.23 PK NAIL SET IN HMA.
CP #10 - ELEV=887.46 PK NAIL SET IN HMA.
BM #20 - ELEV=885.79 SPIKE SET IN PP

DATUM = NAVD 88

COPYRIGHT © 2011 BY BAXTER & WOODMAN, INC.
 STATE OF ILLINOIS - PROFESSIONAL DESIGN FIRM
 LICENSE NO. - 384-00121 - EXPIRES 4/30/2011
 15642 PM
 PROJECT: GRAF ROAD BRIDGE OVER LAWRENCE CREEK
 SHEET: 54 OF 54



DESIGNED - CAC	REVISED - 12/31/10 PER MCDOT
DRAWN - BCD	REVISED - 02/01/11 PER MCDOT
CHECKED - MDW	REVISED - 02/01/11 PER IDOT
DATE - 10/08/10	FILE -

**MCHENRY COUNTY DIVISION OF TRANSPORTATION
GRAF ROAD BRIDGE OVER
LAWRENCE CREEK**

ALIGNMENT, TIES AND BENCHMARKS

SCALE: 1"=40'

STA. TO STA.

TR	SECTION	COUNTY	TOTAL SHEETS	SHEET NO.
0037	06-00322-00-BR	MCHENRY	54	10
C-91-358-06		CONTRACT NO. 63569		
FED. ROAD DIST. NO. 1 (ILLINOIS) FED. AID PROJECT BROS-0001683				