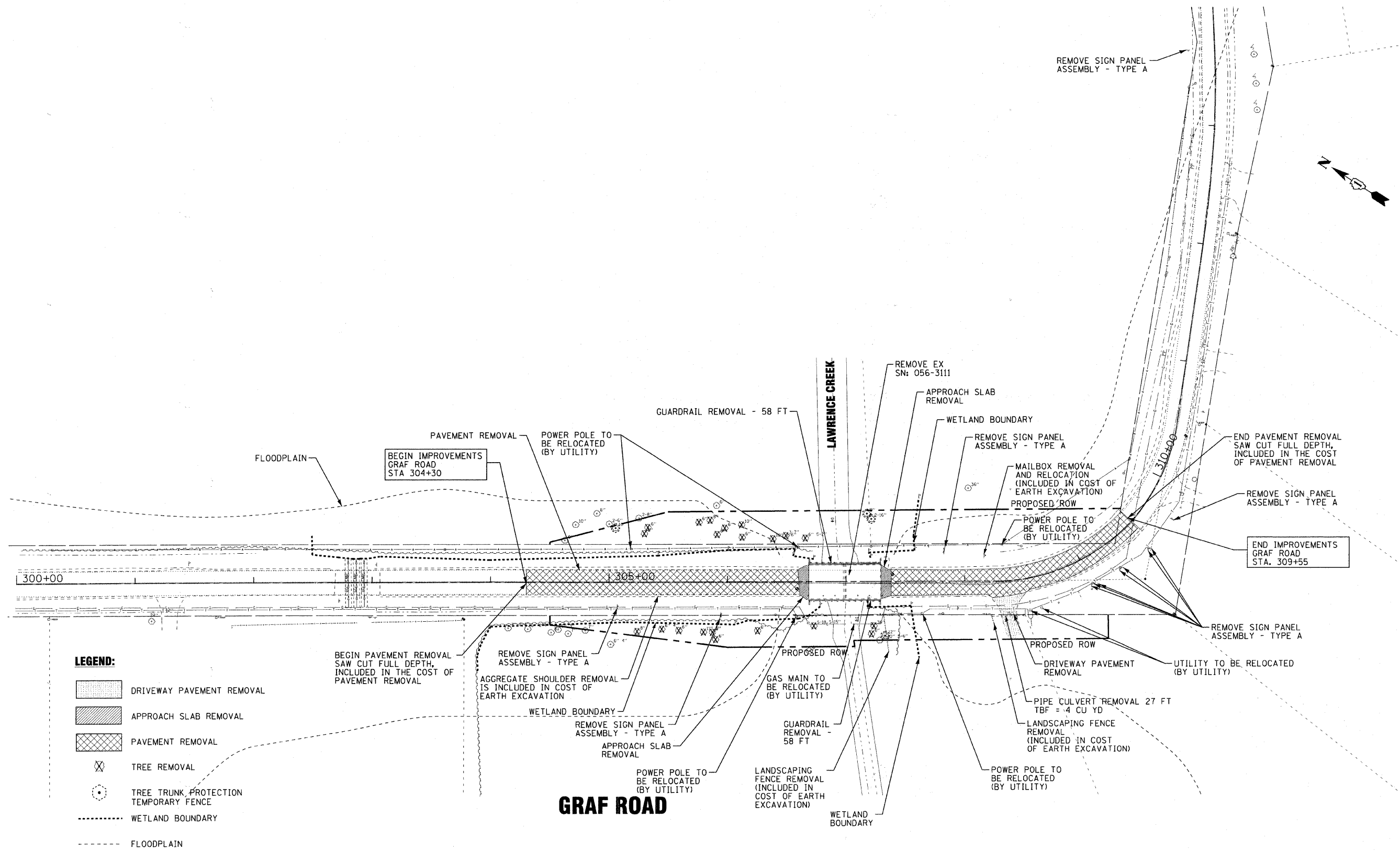


COPYRIGHT © 2011 BY BAXTER & WOODMAN, INC.
 STATE OF ILLINOIS PROFESSIONAL DESIGN FIRM
 LICENSE NO. 184-00121, EXPIRES 4/30/2011
 153655 3RD
 2/7/2011
 C:\p\Road\Bros\BROS-CAD\SUBSET\DRAWINGS\CDNS-PHASE 1\Grdf\East\0122-GrdfEast-Removal.dwg



DESIGNED - CAC	REVISED - 12/31/10 PER MCDOT
DRAWN - BCD	REVISED - 02/01/11 PER MCDOT
CHECKED - MDW	REVISED - 02/01/11 PER IDOT
DATE - 10/08/10	FILE -

MCHENRY COUNTY DIVISION OF TRANSPORTATION
GRAF ROAD BRIDGE OVER
LAWRENCE CREEK

EXISTING CONDITIONS AND REMOVAL PLAN
 SCALE: 1"=40'
 STA. 300+00 TO STA. 314+00

TR RTE	SECTION	COUNTY	TOTAL SHEETS	SHEET NO.
0037	06-00322-00-BR	MCHENRY	54	11
C-91-358-06		CONTRACT NO. 63569		
FED. ROAD DIST. NO. 1 ILLINOIS FED. AID PROJECT BROS-00016831				