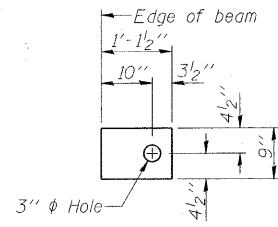


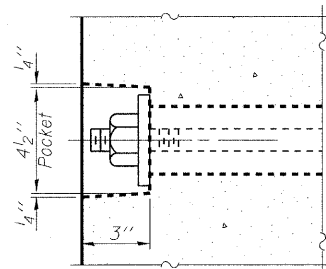
FABRIC BEARING PAD
(Interior - 32 Req'd)



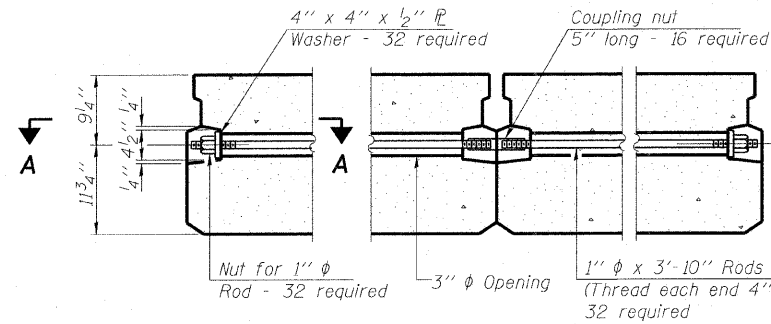
FABRIC BEARING PAD
(Exterior - 8 Req'd)

FIXED

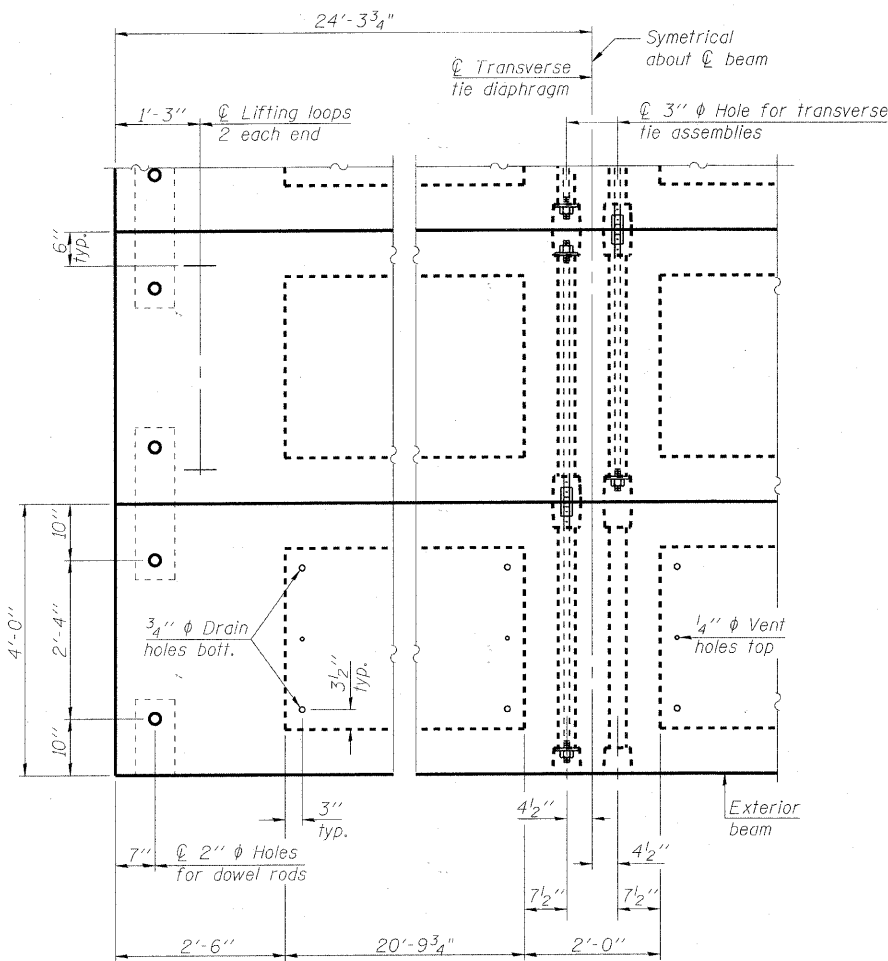
Notes:
All bearing pads shall be 1" thick.



SECTION A-A

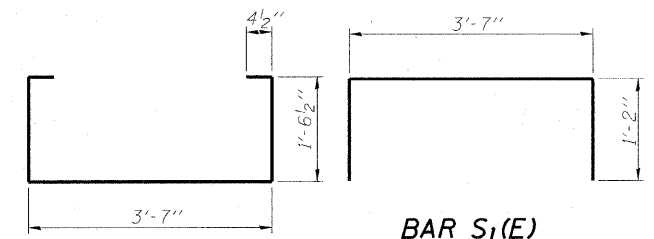


TYPICAL TRANSVERSE TIE ASSEMBLY

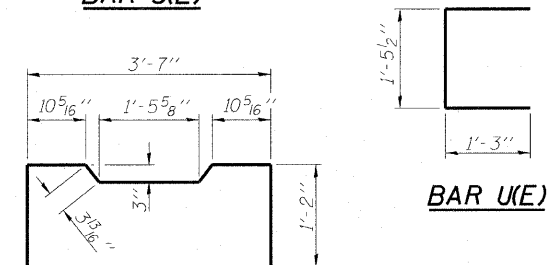


PLAN VIEW

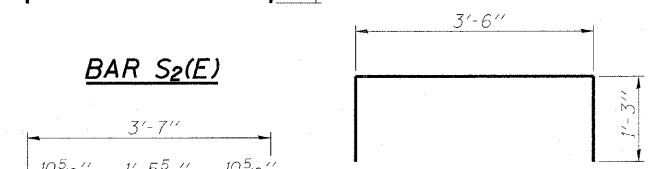
Note: Connect beams in pairs with the transverse tie configuration shown.



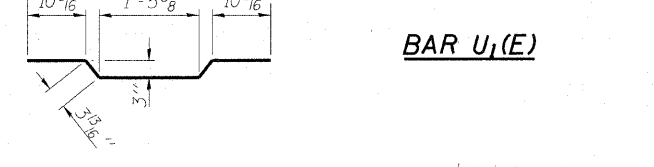
BAR S1(E)



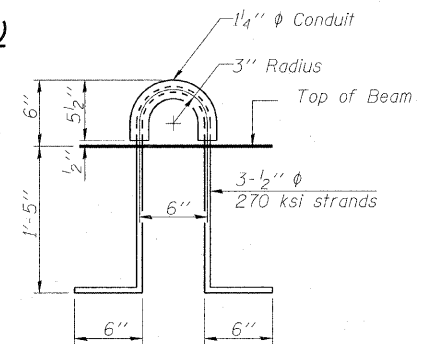
BAR S2(E)



BAR U1(E)



BAR A1(E)



LIFTING LOOP DETAIL

NOTES

- Prestressing steel shall be uncoated high strength, low relaxation 7-wire strand, Grade 270. The nominal diameter shall be 1/2" and the nominal cross-sectional area shall be 0.153 sq. in. The 1" diameter rods in the transverse tie assembly shall be tightened to a snug fit and the threads set. Pockets on exterior faces of bridge shall be filled with grout after transverse tie assembly is in place.
- Reinforcement bars shall conform to ASTM A 706, Grade 60. (See Special Provisions).
- Two 1/8" fabric adjusting shims of the dimensions of the exterior bearing pad shall be provided for each bearing pad location.
- A minimum 2 1/2" diameter lifting pin shall be used to engage the lifting loops during handling.
- Corrosion Inhibitor, per Article 1020.05(b)(12) and 1021.06 of the Standard Specifications, shall be used in the concrete for precast prestressed concrete deck beams.
- Compressive strength of prestressed concrete, f'c, shall be 6000 psi.
- Compressive strength of prestressed concrete at release, f'ci, shall be 5000 psi.

BILL OF MATERIAL

Precast Prestressed Conc. Deck Bms. (21" depth)	Sq. Ft.	3,501
---	---------	-------

COPYRIGHT © 2010 BY BAYTER & WOODMAN, INC. ALL RIGHTS RESERVED. PROJECT NO. 06-00322-00-BR. SHEET NO. 54 OF 27. DATE: 7/7/2010.

FILE NAME =	USER NAME =	DESIGNED - BLB	REVISED - PER MCDOT 12/31/10
		CHECKED - BAB	REVISED -
		DRAWN - BCD	REVISED -
		CHECKED - BLB	REVISED -

MCHENRY COUNTY DIVISION OF TRANSPORTATION
GRAF ROAD BRIDGE OVER
LAWRENCE CREEK

21" x 48" PPC DECK BEAM DETAILS
STRUCTURE NO. 056-3182
SHEET NO. 4 OF 19 SHEETS

TR	SECTION	COUNTY	TOTAL SHEETS	SHEET NO.
0037	06-00322-00-BR	MCHENRY	54	27
C-91-358-06		CONTRACT NO. 63569		
FED. ROAD DIST. NO. 1 ILLINOIS FED. AID PROJECT BR05-001(683)				