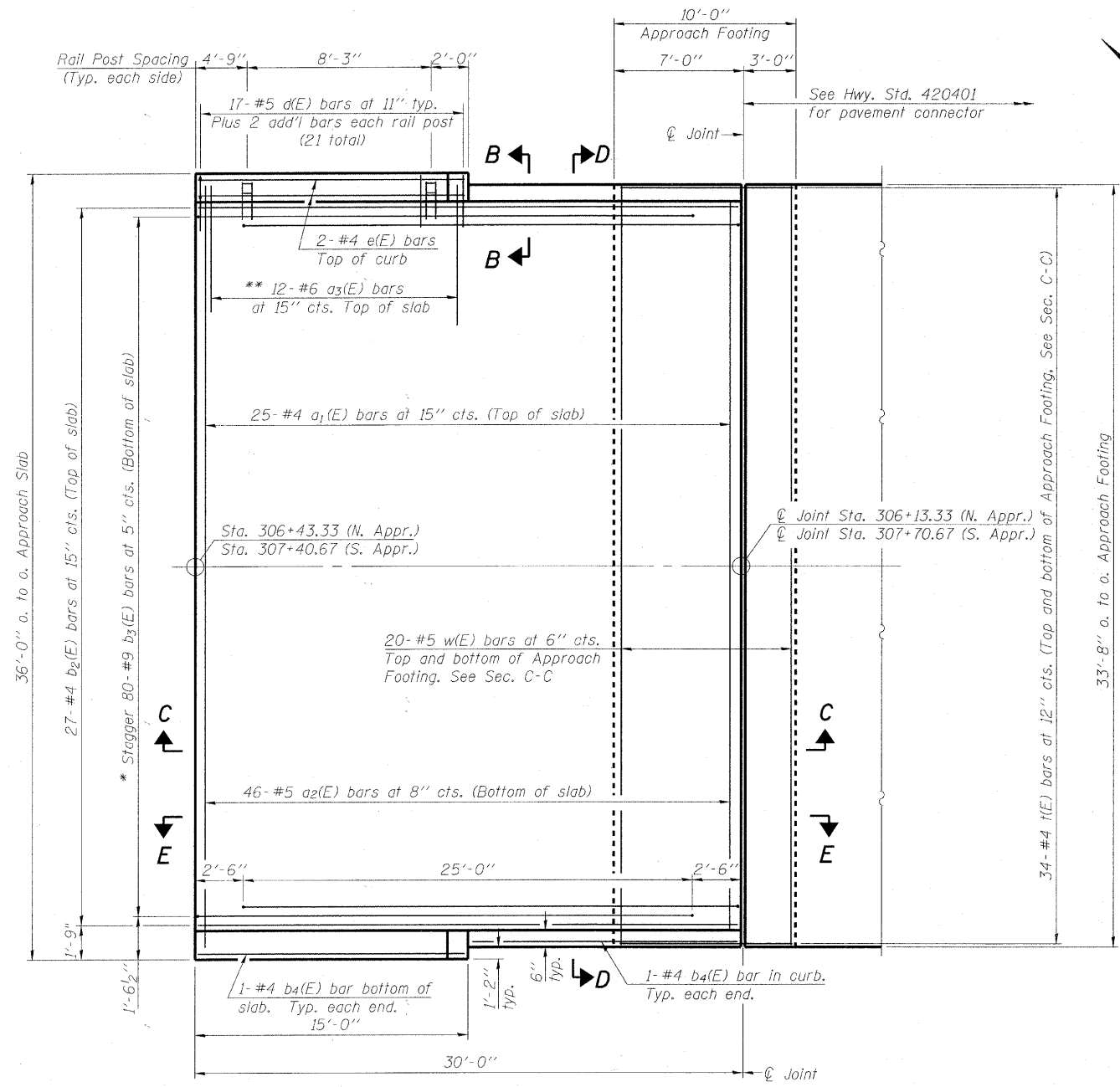


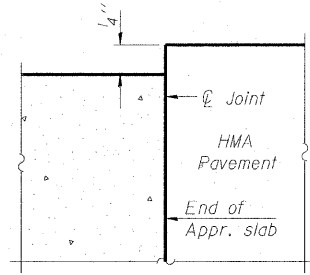
Notes:
 See sheet 8 of 19 for Sections C-C & D-D and View E-E.
 $a_1(E)$ and $a_2(E)$ bar spacings measured along ϕ Rdwy.
 See sheet 6 of 19 for Curb Details.
 See sheets 11 and 12 of 19 for Railing Details.
 See sheet 8 of 19 for location of Detail A.



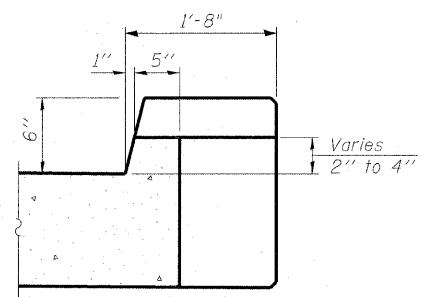
PLAN

South Approach Slab shown
 North Approach Slab similar

* Tilt #9 $b_3(E)$ bars as required to maintain clearance.
 ** Space between $a_1(E)$ bars, typ. ea. curb.



**FLEXIBLE PAVEMENT
 DETAIL A**



VIEW B-B

COPYRIGHT © 2010 BY BAYVEER & WOODMAN, INC.
 ALL RIGHTS RESERVED. PROJECT NO. 06-00322-00-BR
 LICENSE NO. 184-00120 - EXPIRES 4/30/2011
 5300 S. W. 11th St., Suite 100, Fort Lauderdale, FL 33309
 754-366-8800

FILE NAME =	USER NAME =	DESIGNED - BLB	REVISED - PER MCDOT 12/31/10	MCHENRY COUNTY DIVISION OF TRANSPORTATION GRAF ROAD BRIDGE OVER LAWRENCE CREEK	BRIDGE APPROACH SLAB DETAILS STRUCTURE NO. 056-3182	TR	SECTION	COUNTY	TOTAL	SHEET
		CHECKED - BAB	REVISED -			0037	06-00322-00-BR	MCHENRY	54	30
		DRAWN - BCD	REVISED -			C-91-358-06		CONTRACT NO. 63569		
		CHECKED - BLB	REVISED -			SHEET NO. 7 OF 19 SHEETS		FED. ROAD DIST. NO. 1 ILLINOIS FED. AID PROJECT		BROS-00016831

(Sheet 1 of 2)