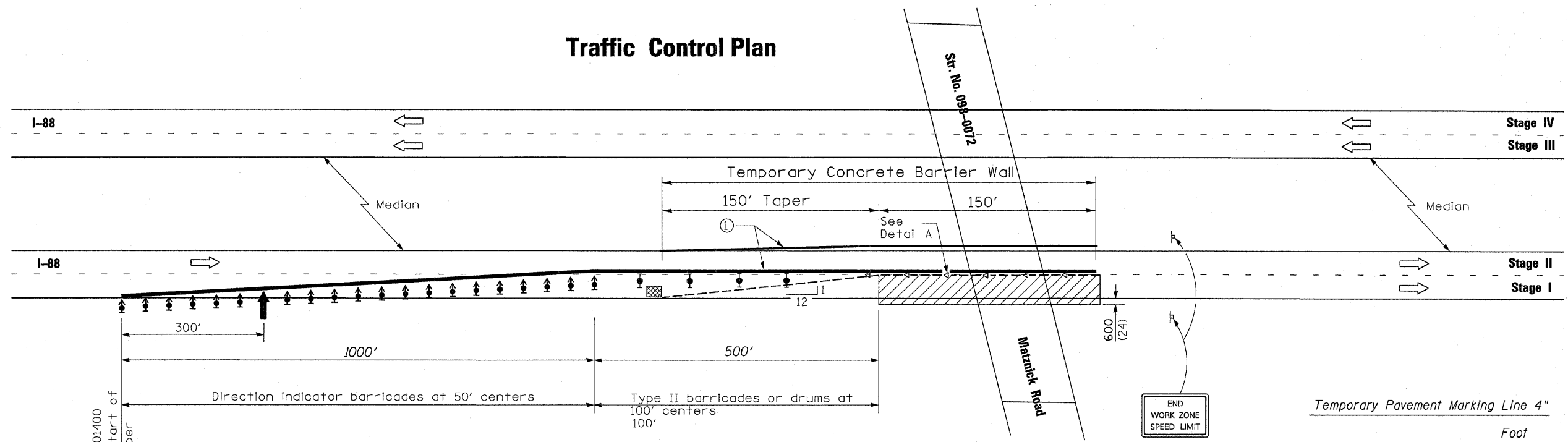


Traffic Control Plan



Pavement Marking Removal

Stage I	100
Stage II	100
Stage III	100
Stage IV	100
Total	400 Sq Ft

Temporary Concrete Barrier

Stage I	300 Feet
Total	300 Feet

Impact Attenuators, Temporary

Stage I	1 Each
Total	1 Each

Temporary Pavement Marking Line 4"

Stage I	1950
Stage II	1950
Stage III	1950
Stage IV	1950
Total	7800 Foot

Relocate Temporary Concrete Barrier

Stage II	300
Stage III	300
Stage IV	300
Total	900

Impact Attenuators, Relocate

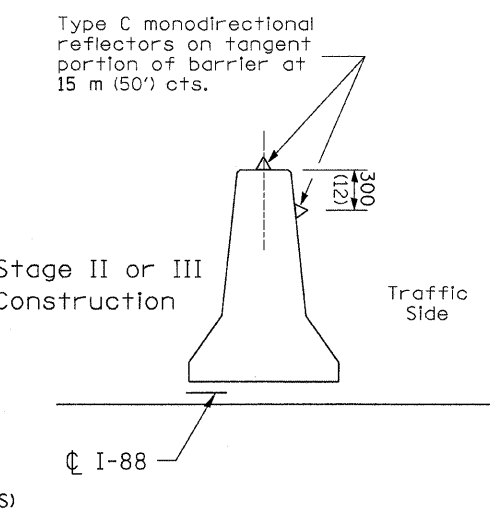
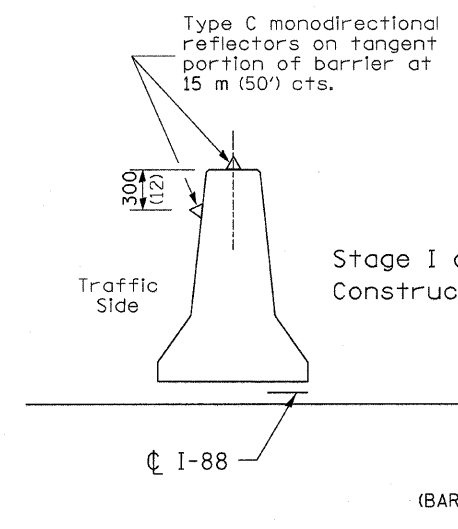
Stage II	1
Stage III	1
Stage IV	1
Total	3 Each

Workzone Pavement Marking Removal

Stage I	650
Stage II	650
Stage III	650
Stage IV	650
Total	2600 Sq Ft

Short-term pavement marking

Project	48
Total	48 Feet



- SYMBOLS**
- ↑ Arrow board
 - ▨ Work area
 - ⊥ Sign
 - ↑ Direction indicator barricade with steady burn monodirectional light
 - ⊥ Type II barricade or drum with steady burn monodirectional light
 - Temporary concrete barrier
 - ◁ Type C Monodirectional reflector
 - ▣ Impact attenuator

① Temporary pavement marking shall be placed throughout the taper and along-side the work area. The edge line shall be white for right lane closure and yellow for left lane closures.

All dimensions are in millimeters (inches) unless otherwise shown.

Traffic Control Plan
Matznick Road over I-88
FAI Route 88 Section D2 Bridge Painting 2011-1
Whiteside County
Structure No. 098-0072

FILE NAME =	USER NAME = linkdj	DESIGNED -	REVISD -	STATE OF ILLINOIS DEPARTMENT OF TRANSPORTATION	Traffic Control Plan Structure No. 098-0072	F.A.I. RTE.	SECTION	COUNTY	TOTAL SHEETS	SHEET NO.
D:\BR\Bridge Painting\Contracts\PAINTING\64G28\PLAN.dgn		DRAWN -	REVISD -			88	D2 Bridge Painting 2011-1	Whiteside	14	5
PLOT SCALE = 50.0000' / IN.		CHECKED -	REVISD -			CONTRACT NO. 64G28				
PLOT DATE = Sat Jan 22 06:48:39 2011		DATE -	REVISD -			FED. ROAD DIST. NO. ILLINOIS FED. AID PROJECT				