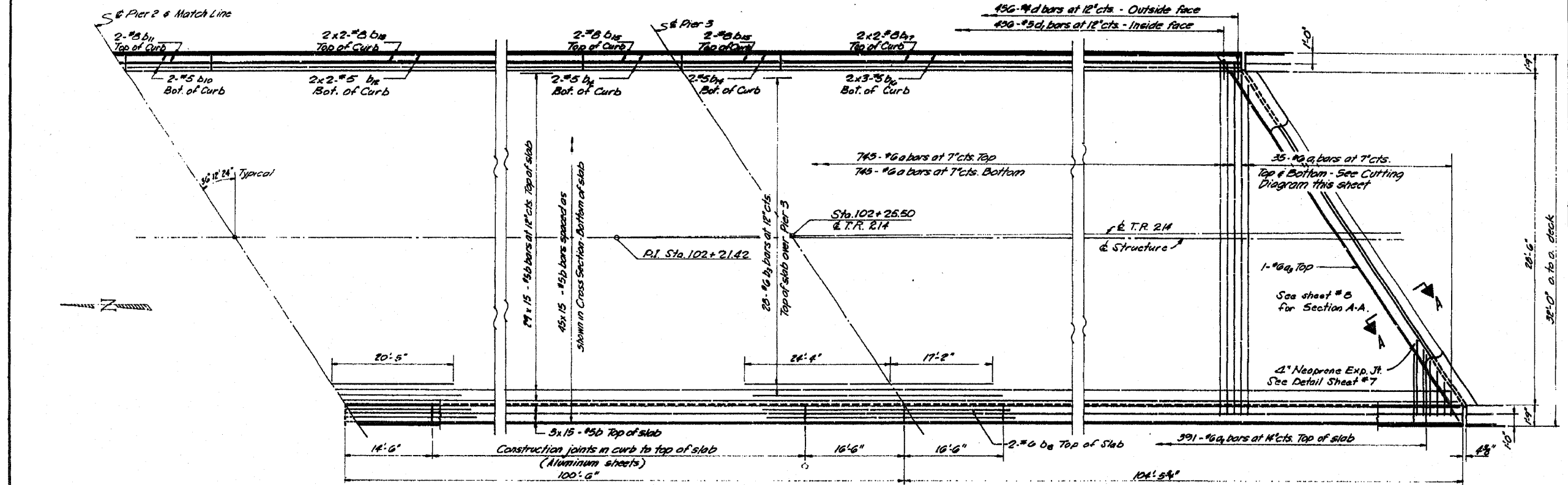


ROUTE NO.	SEC.	COUNTY	SHEET NO.	STREET NO.	SHEET NO. 7
FA. 403	195-2	WHITESIDE	450	120	18 SHEETS
FED. ROAD DIST. NO. 7 ILLINOIS F.A. PROJ.					



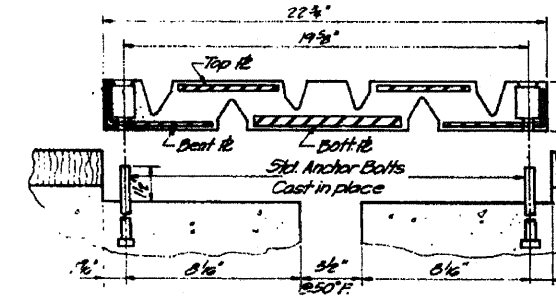
PART PLAN

BILL OF MATERIAL

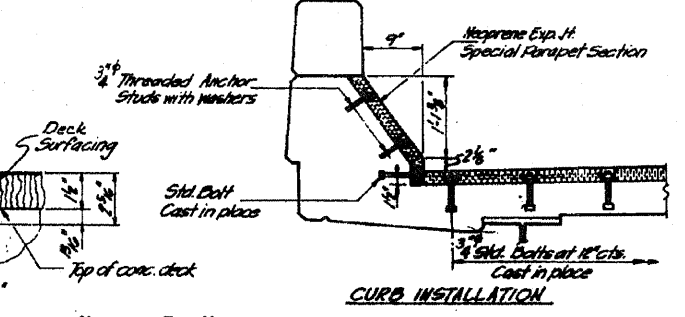
Bar	No.	Size	Length	Shape
a	1440	#8	30'-0"	
a1	70	#8	30'-10"	
a2	782	#8	2'-0"	
a3	2	#8	38'-10"	
b	1800	#5	31'-0"	
b1	32	#8	31'-9"	
b2	32	#8	38'-0"	
b3	32	#8	41'-0"	
b4	16	#5	27'-3"	
b5	12	#5	36'-9"	
b6	8	#5	20'-3"	
b7	8	#8	20'-3"	
b8	12	#8	30'-9"	
b9	8	#5	42'-7"	
b10	8	#5	12'-0"	
b11	8	#5	14'-0"	
b12	8	#5	38'-0"	
b13	8	#5	16'-3"	
b14	8	#5	16'-3"	
b15	12	#5	30'-7"	
b16	8	#5	16'-3"	
b17	8	#5	28'-4"	
d	412	#4	4'-9"	
d1	412	#5	3'-6"	
Reinforcement Bars				Lbs. 88890
Class I Concrete				Cu Yds. 567.4

CUTTING DIAGRAM - a, BARS

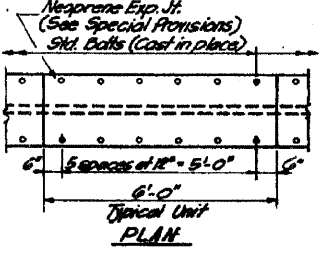
Order a bars full length - Cut as shown and use remainder in bottom of slab.



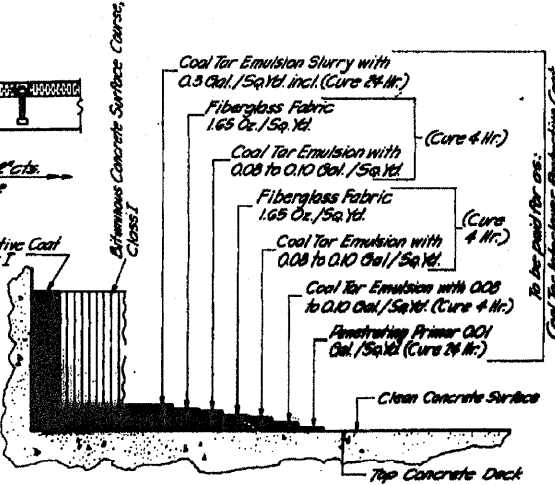
CROSS SECTION



CURB INSTALLATION



NEOPRENE EXPANSION JOINT DETAILS



DECK SURFACING DETAIL

DESIGNED	LR	EXAMINED	19
CHECKED	S.MCK	PASSED	
DRAWN	L.P.	APPROVED	
CHECKED	S.MCK		

FOR INFORMATION ONLY

SUPERSTRUCTURE
F.A. RTE. 403 - SEC. 195-2HVB
WHITESIDE COUNTY
STATION 1897+70.45