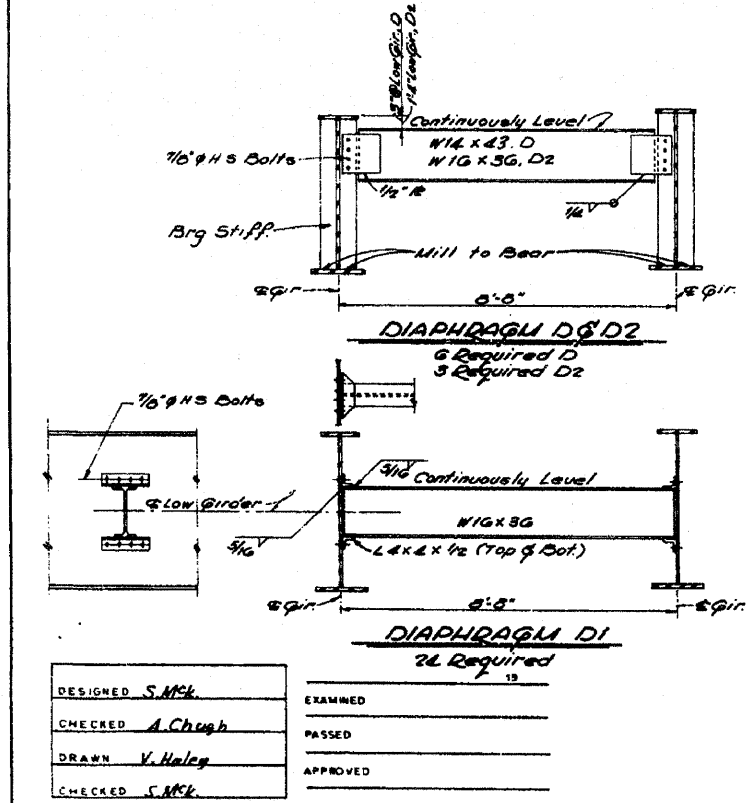
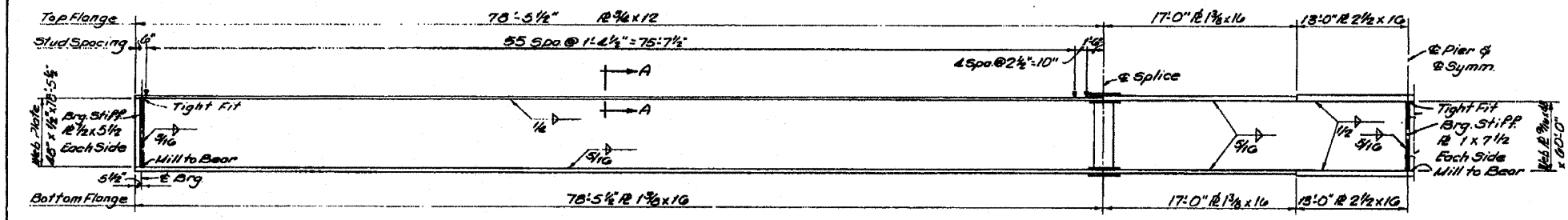
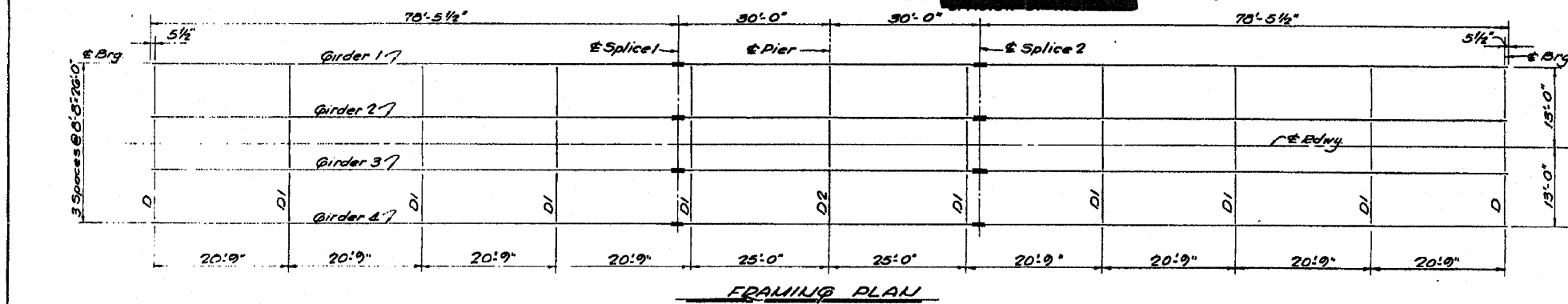


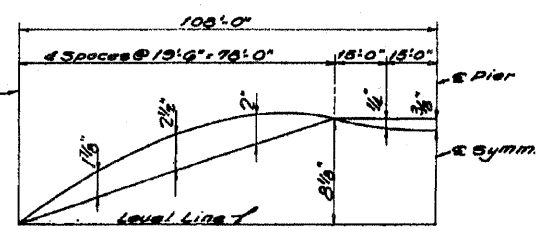
STATE OF ILLINOIS



HALF GIRDER ELEVATION

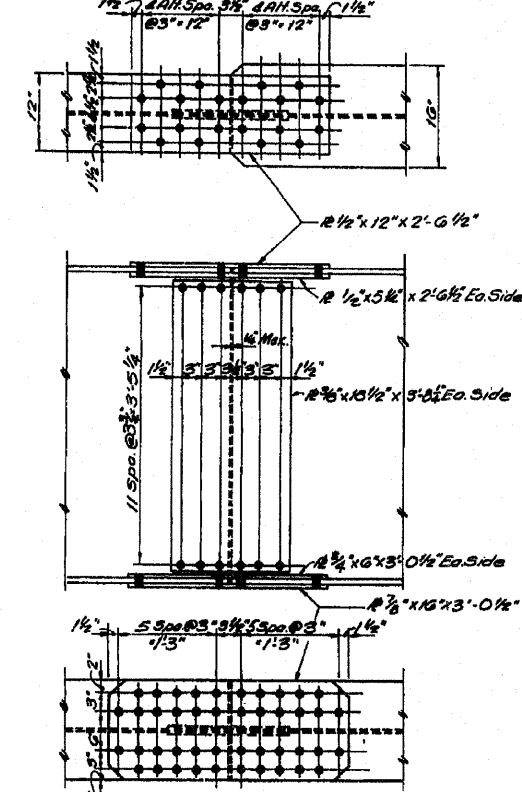
| | 0.4 Sp 1 | Pier |
|----------------------------------|----------|-------|
| I_x (in ⁴) | 21442 | 55655 |
| I_y (in ⁴) | 1101 | 2099 |
| D_x (in) | 1043 | 1043 |
| D_y (in) | 630 | 1819 |
| I_x (in ⁴) | 761 | 1039 |
| I_y (in ⁴) | 22419 | --- |
| S_x (in ³) | 413 | --- |
| S_y (in ³) | 0.501 | 0.501 |
| M_x (ft) | 4.55 | 823 |
| M_y (ft) | 3.87 | 4.70 |
| I_c (in ⁴) | 61849 | --- |
| S_c (in ³) | 1532 | --- |
| M_x (ft) | 217 | 678 |
| M_y (ft) | 176 | 150 |
| M_{max} (ft) | 225 | 268 |
| $I_{c,avail}$ (in ⁴) | 767 | 482 |
| $I_{c,avail}$ (in ⁴) | 1915 | 1991 |
| V_R (k) | 50.4 | --- |

| | Girder 1 | Girder 2 | Girder 3 | Girder 4 |
|----------------|----------|----------|----------|----------|
| Brig. U. Abut. | 650.083 | 650.234 | 650.234 | 650.083 |
| Splice 1 | 650.762 | 650.913 | 650.913 | 650.762 |
| Pier | 650.781 | 650.882 | 650.882 | 650.781 |
| Splice 2 | 650.762 | 650.913 | 650.913 | 650.762 |
| Brig. S. Abut. | 650.083 | 650.234 | 650.234 | 650.083 |



| | Abut. | Pier |
|------------|-------|-------|
| CE (k) | 40.7 | 228.3 |
| SE (k) | 34.9 | 22.5 |
| Imp. (k) | 7.5 | 18.4 |
| Excess (k) | 108.1 | 299.2 |

| ROUTE NO. | SEC. | COUNTY | TOTAL SHEETS | SHEET NO. | SHEET NO. OF |
|-----------|-------|-----------|--------------|-----------|--------------|
| F.A. 403 | 155-2 | WHITESIDE | 400 | 177 | 10 SHEETS |



3/4" x 4" CD 1020 STL granular or solid flux filled headed studs automatically end welded.

SECTION A-A (300 Studs per Girder)

STRUCTURAL STEEL
F.A. RTE. 403-SEC. 155-2 HS-2
WHITESIDE COUNTY
STATION 2027+48.41

FOR INFORMATION ONLY