

STATE OF ILLINOIS
DEPARTMENT OF TRANSPORTATION
DIVISION OF HIGHWAYS

**PROPOSED
HIGHWAY PLANS**

FAP ROUTE 738 (IL 251)
SECTION (5HB)M-1

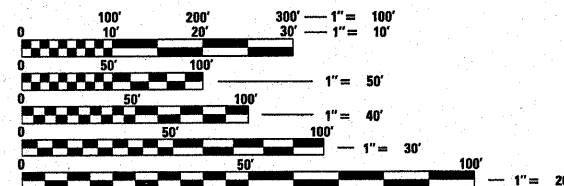
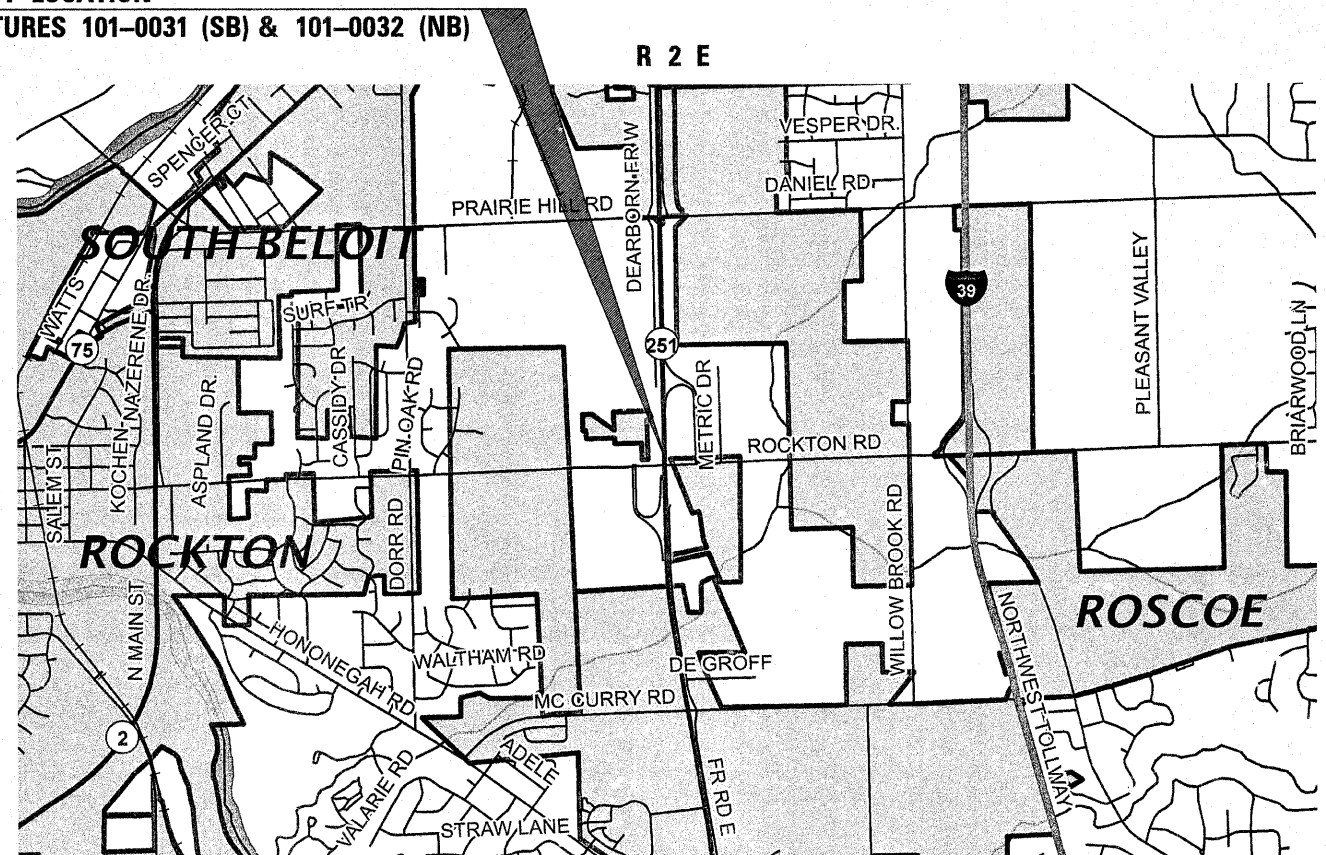
BRIDGE REPAIRS
WINNEBAGO COUNTY

C-92-072-11

F.A.P. RTE.	SECTION	COUNTY	TOTAL SHEETS	SHEET NO.
738	(5HB)M-1	WINNEBAGO	9	1
		ILLINOIS	CONTRACT NO. 64G89	

FOR INDEX OF SHEETS, SEE SHEET NO. 2

PROJECT LOCATION
STRUCTURES 101-0031 (SB) & 101-0032 (NB)

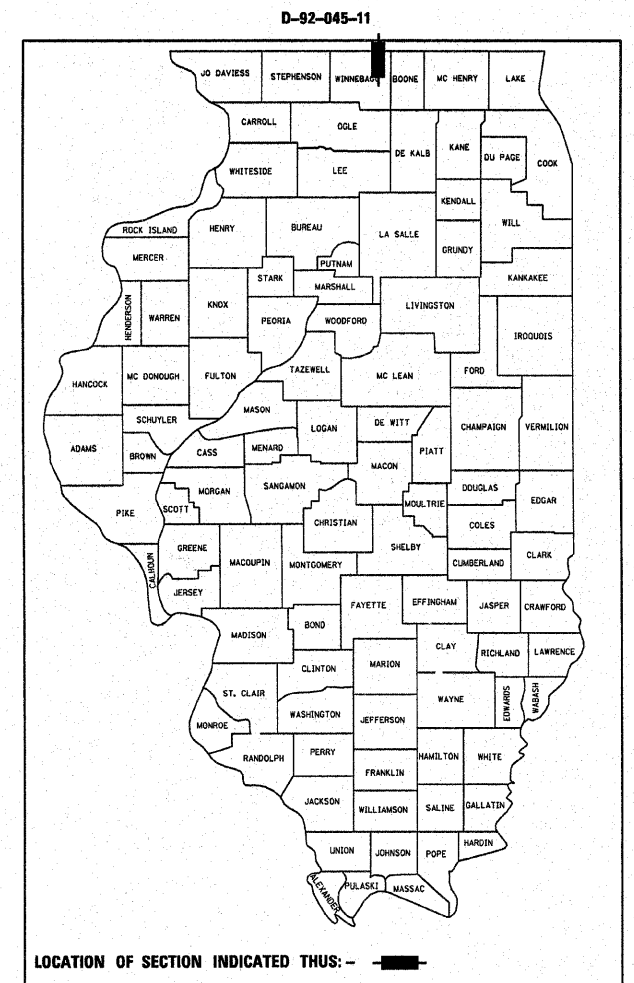


FULL SIZE PLANS HAVE BEEN PREPARED USING STANDARD ENGINEERING SCALES. REDUCED SIZED PLANS WILL NOT CONFORM TO STANDARD SCALES. IN MAKING MEASUREMENTS ON REDUCED PLANS, THE ABOVE SCALES MAY BE USED.

J.U.L.I.E.
JOINT UTILITY LOCATION INFORMATION FOR EXCAVATION
1-800-892-0123
OR 811

BRIDGE MAINTENANCE ENGINEER: Mahmoud Etemadi 815/284-5393
PLAN TECHNICIAN: Dan Link 815/284-5416

CONTRACT NO. 64G89



STATE OF ILLINOIS
DEPARTMENT OF TRANSPORTATION
DIVISION OF HIGHWAYS

SUBMITTED January 27, 2011
Eric S. Theobald
DEPUTY DIRECTOR OF HIGHWAYS, REGION ENGINEER

March 25, 2011
Scott E. Stitt P.E.
acting ENGINEER OF DESIGN AND ENVIRONMENT

March 25, 2011
Christine M. Reed
DIRECTOR OF HIGHWAYS, CHIEF ENGINEER

**PRINTED BY THE AUTHORITY
OF THE STATE OF ILLINOIS**

INDEX OF SHEETS

1. Cover Sheet
2. Index of Sheets, Standards, General Notes
3. Summary of Quantities
4. Traffic Control at Transitions
5. General Plan & Elevation
6. Abutment Backwall Repairs (SB)
7. PPC I-Beam Repairs (SB)
8. Abutment Backwall Repairs (NB)
9. PPC I-Beam Repairs (NB)

STANDARDS

- 701006-03 Off-Road Operations, 2L, 2W, 15 5/32 (4.5 m) to 24 9/32 (600 mm) From Pavement Edge
- 701101-02 Off-Road Operations, Multilane, 15' (4.5 m) to 24" (600 mm) From Pavement Edge
- 701601-07 Urban Lane Closure, Multilane, 1W or 2W with Nontraversable Median
- 720011-01 Metal Posts for Signs, Markers and Delineators
- 701901-01 Traffic Control Devices
- 728001-01 Telescoping Steel Sign Support
- 729001-01 Applications of Types A and B Metal Posts (For Signs & Markers)

GENERAL NOTES

The final top four inches of soil in any right-of-way area disturbed by the Contractor must be capable of supporting vegetation. The soil must be from the A horizon (zero to 2' deep) of soil profiles of local soils.

All Borrow/Waste/Use sites must be approved by the Department prior to removing any material from the project or initiating any earthmoving activities, including temporary stockpiling outside the limits of construction.

The Contractor shall seed all disturbed areas within the project limits. Seeding Class 4 or 2A shall be used, except in front of properties where the grass will be mowed, then use Seeding, Class 1. Class 2A shall be used on front slopes and ditch bottoms. Class 4 shall be used behind Type A gutter, on all backslopes and areas behind the backslope, and beyond the toe of front slope on fill sections without ditches. This work will be included in the contract unit price per Lump Sum for MOBILIZATION.

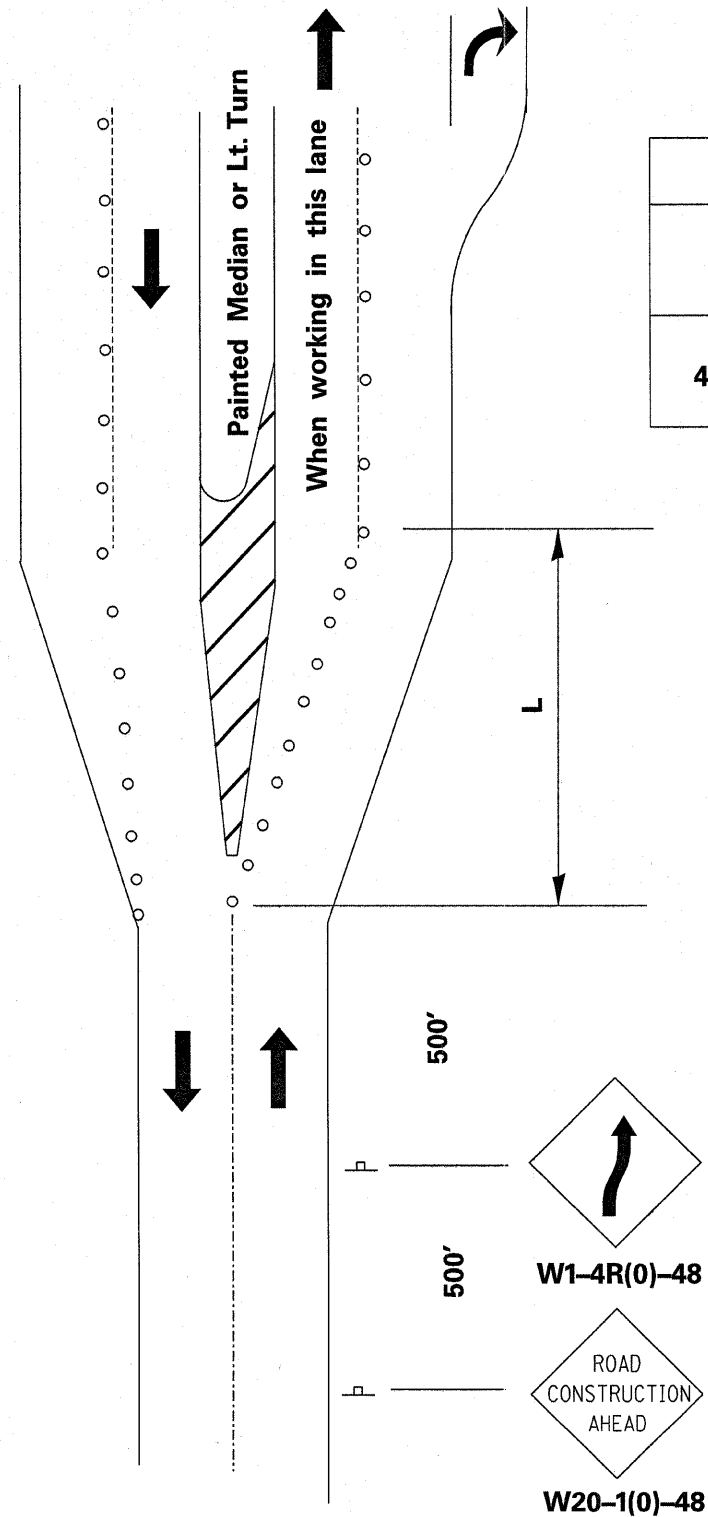
Fertilizer shall be applied to all disturbed areas and incorporated into the seedbed prior to seeding or placement of sod at the rate specified in Sections 250 and 252 of the Standard Specifications. This work shall be included in the cost of Mobilization.

Mulch Method II shall be applied over all seeded areas. This shall be included in the cost of the MOBILIZATION.

The Contractor shall be responsible for protecting utility property during construction operations as outlined in Article 107.31 of the Standard Specifications. A minimum of 48 hours advance notice is required for non-emergency work. The JULIE number is 800-892-0123.

FILE NAME =	USER NAME = lmkdj	DESIGNED -	REVISD -	STATE OF ILLINOIS DEPARTMENT OF TRANSPORTATION	INDEX OF SHEETS, GENERAL NOTES, STANDARDS	F.A.P. RTE.	SECTION	COUNTY	TOTAL SHEETS	SHEET NO.
0:\BR\CADD plans\Winnebago County\101001 & 0032\PLANeng.dgn	DRAWN -	REVISD -	738			(5)BM-1	WINNEBAGO	9	2	
PLOT SCALE = 50.0000' / IN.	CHECKED -	REVISD -	CONTRACT NO. 64C89							
PLOT DATE = Sat Jan 22 07:34:35 2011	DATE -	REVISD -	ILLINOIS FED. AID PROJECT							
SCALE: _____ SHEET NO. ___ OF ___ SHEETS STA. _____ TO STA. _____										

**TRAFFIC CONTROL AT TRANSITION
WHEN 1 LANE INCREASES TO 2 LANES IN THE SAME DIRECTION**



SPEED LIMIT	FORMULAS
40 MPH or Less	$L = \frac{WS^2}{60}$
45 MPH or Greater	$L = (W)(S)$

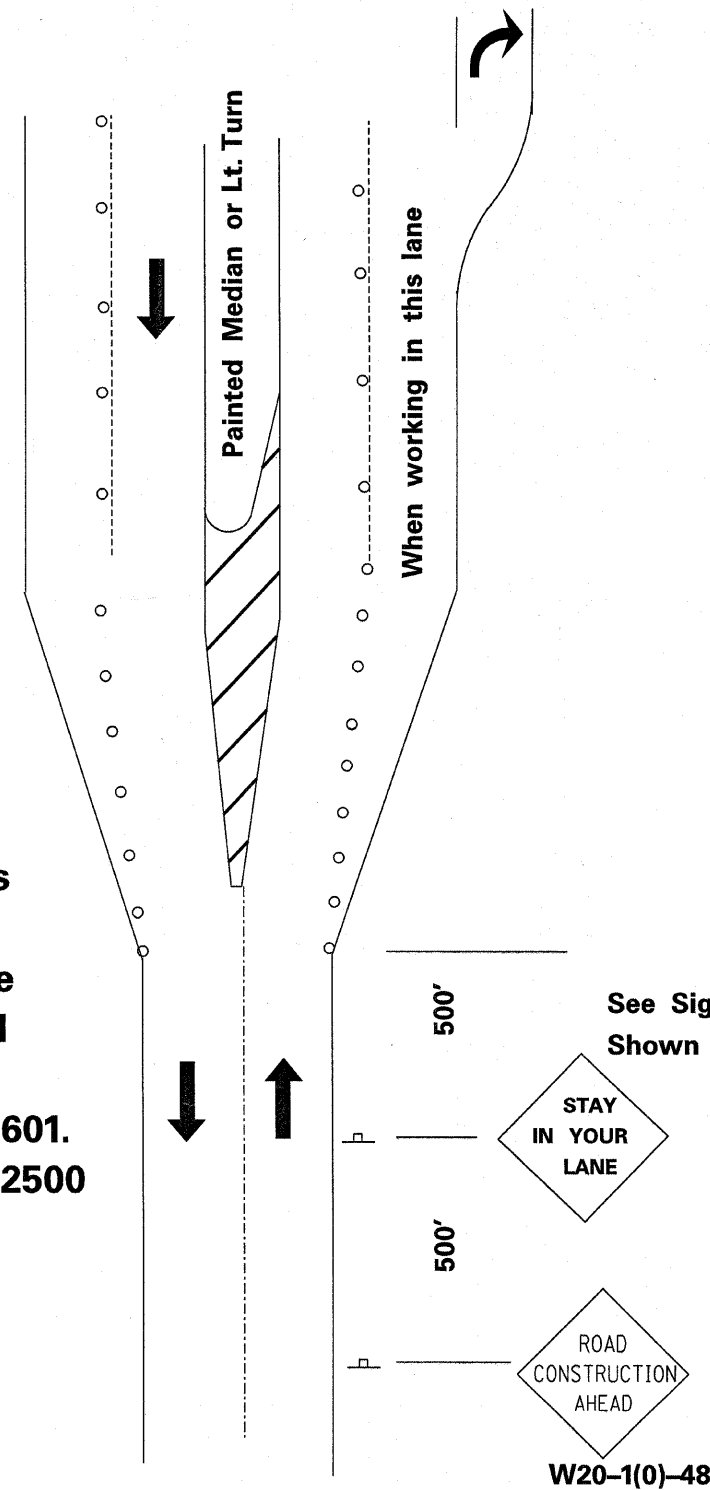
W = Width of Offset (Feet)

S = Normal Posted Speed (MPH)

○ Cone, Drum, or Barricade

NOTE:

All Costs To Comply with this Additional Traffic Control Shall be Considered Included in the Contract Unit Price Per L. SUM for TRAFFIC CONTROL AND PROTECTION STANDARD 701601. If the work area ends within 2500 feet of the transition, the lane closure must be extended as shown.

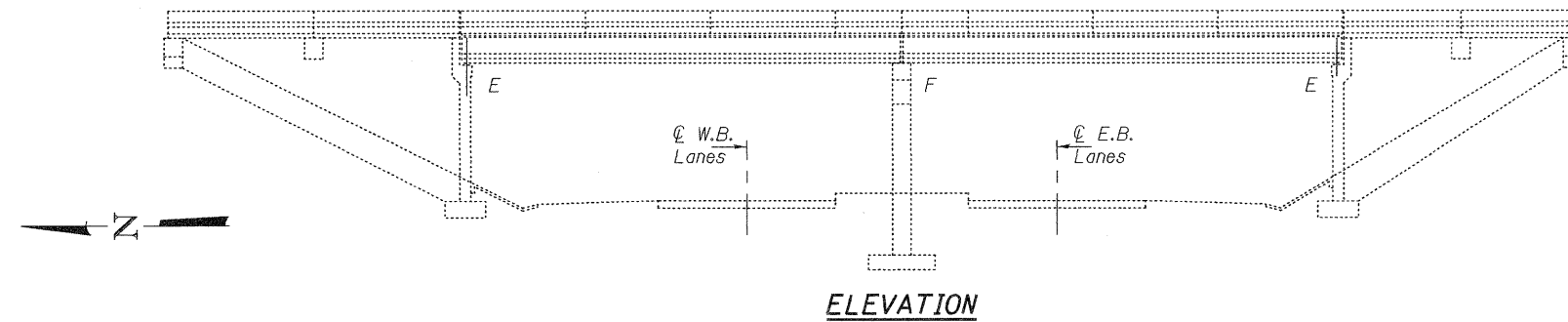


2Into4Intransitiontrafficcontrol.dgn

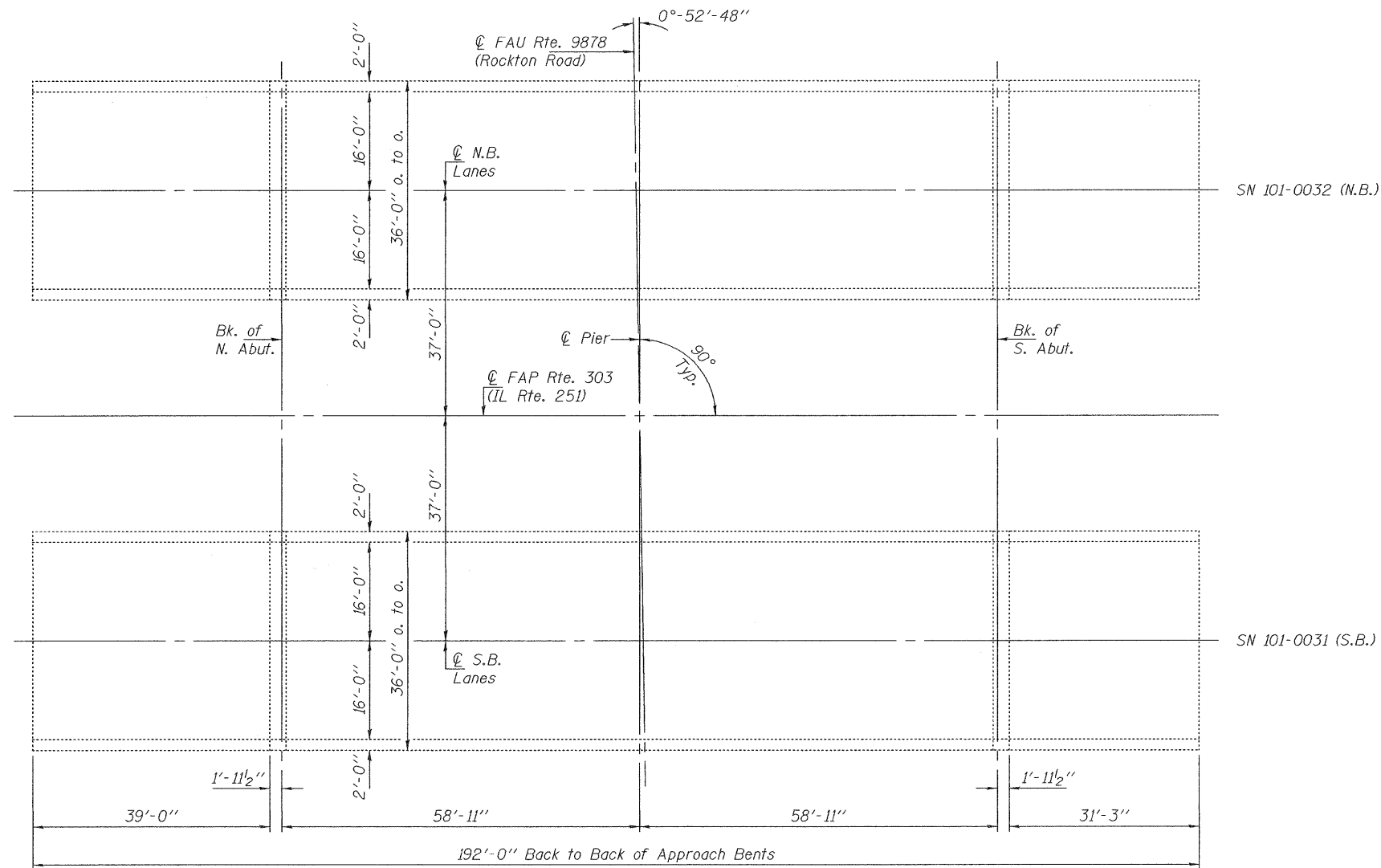
FILE NAME =	USER NAME = jinkdj	DESIGNED -	REVISED -	STATE OF ILLINOIS DEPARTMENT OF TRANSPORTATION	Traffic Control at Transitions	F.A.P. RTE.	SECTION	COUNTY	TOTAL SHEETS	SHEET NO.
D:\BR\CADD\plans\Winnebago County\1010231 & 0032\PLANeng.dgn	DRAWN -	REVISED -	738			(5)B/M-1	Winnebago	9	4	
PLOT SCALE = 50.0000' / IN.	CHECKED -	REVISED -	CONTRACT NO. 64C89							
PLOT DATE = Sat Jan 22 07:34:23 2011	DATE -	REVISED -	ILLINOIS FED. AID PROJECT							
SCALE: _____ SHEET NO. _____ OF _____ SHEETS STA. _____ TO STA. _____										

GENERAL NOTES

Plan dimensions and details relative to existing plans are subject to nominal construction variations. The Contractor shall field verify existing dimensions and details affecting new construction and make necessary approved adjustments prior to construction or ordering of materials. Such variations shall not be cause for additional compensation for a change in scope of the work, however, the Contractor will be paid for the quantity actually furnished at the unit price bid for the work.



ELEVATION



PLAN

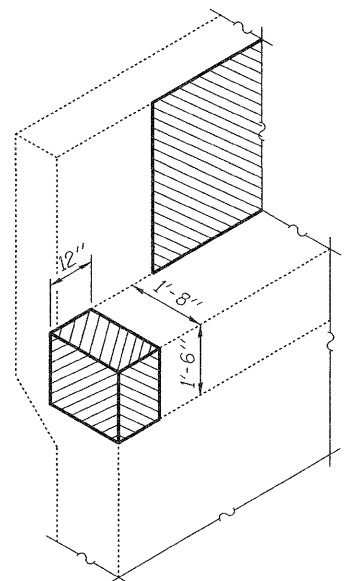
TOTAL BILL OF MATERIAL

ITEM	UNIT	QUANTITY
Polymer Modified Portland Cement Mortar	Sq. Ft.	4.75
Structural Repair of Concrete ≤ 5 inches	Sq. Ft.	244

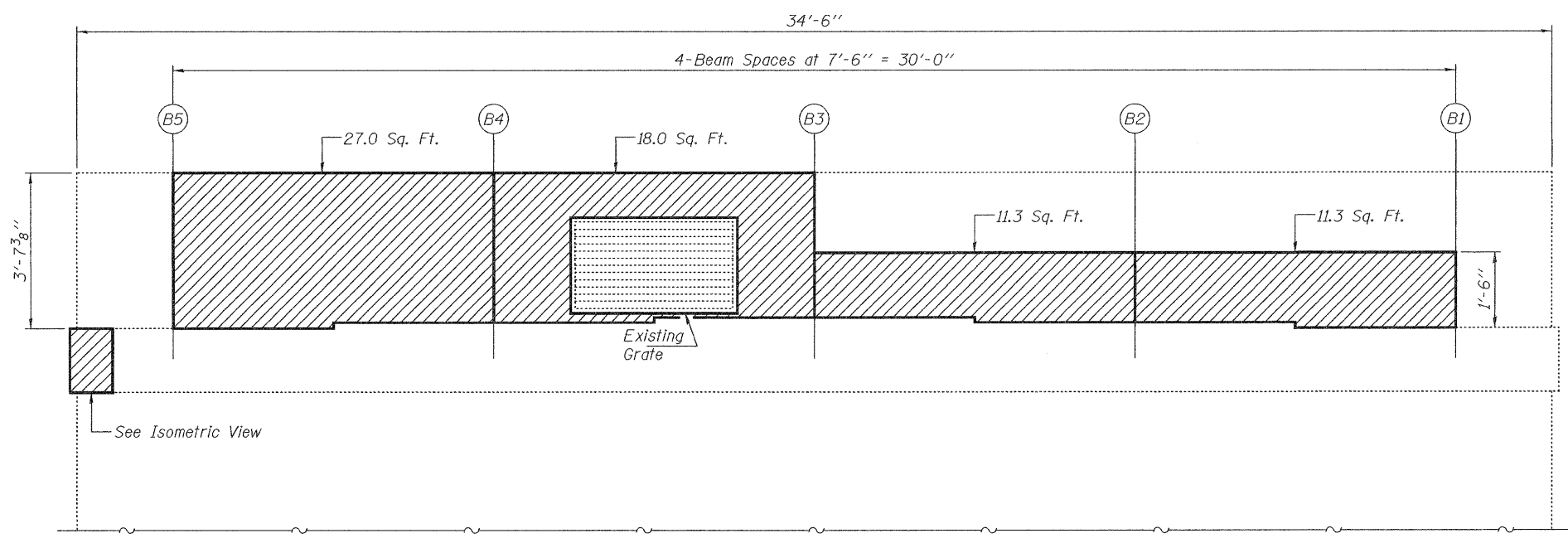


Expires: November 30, 2012

DESIGNED - <i>[Signature]</i>	EXAMINED - <i>[Signature]</i> DATE - MARCH 11, 2011	STATE OF ILLINOIS DEPARTMENT OF TRANSPORTATION	GENERAL PLAN & ELEVATION SN 101-0031 (S.B.) & 0032 (N.B.)	F.A.P. RTE. 738	SECTION (5HB)M1	COUNTY WINNEBAGO	TOTAL SHEETS 9	SHEET NO. 5
CHECKED - <i>[Signature]</i>	PASSED - <i>[Signature]</i>			SHEET NO. 1 OF 5 SHEETS			CONTRACT NO. 64G89	
DRAWN - Kyle M. Steffen	ACTING ENGINEER OF STRUCTURAL SERVICES			ILLINOIS FED. AID PROJECT				
CHECKED - ISL	ACTING ENGINEER OF BRIDGES AND STRUCTURES							

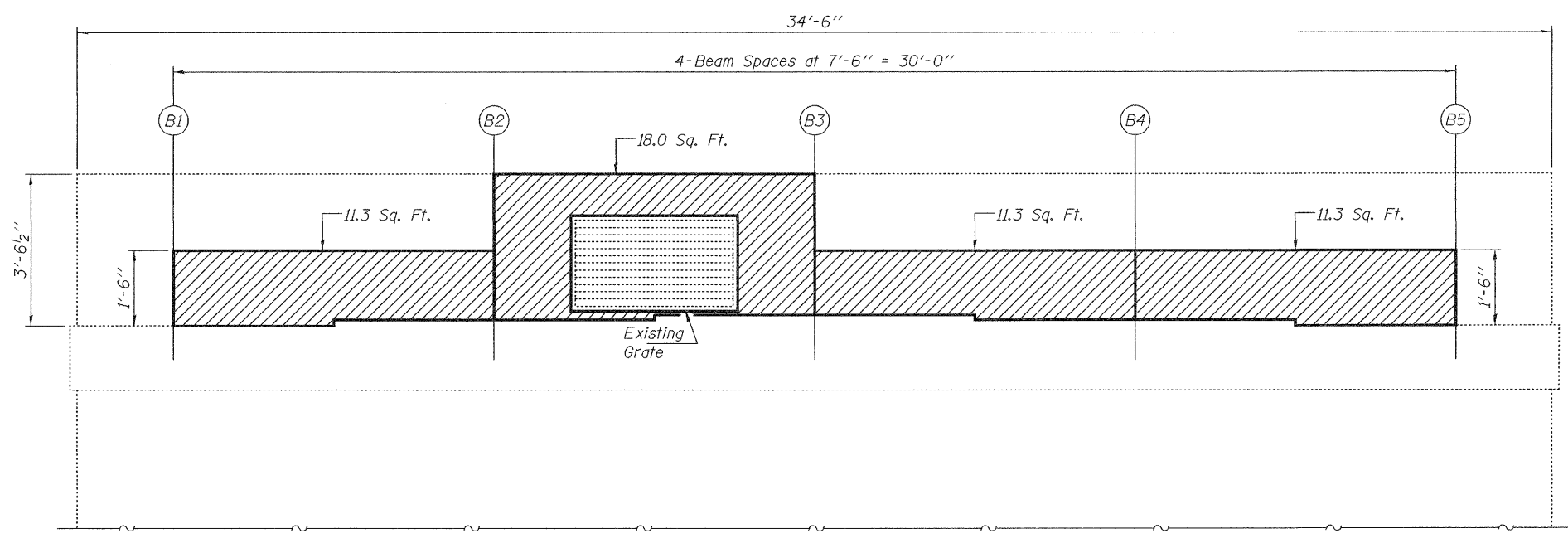


ISOMETRIC VIEW
P.P.C. I-Beam & Bearing
not shown for clarity.



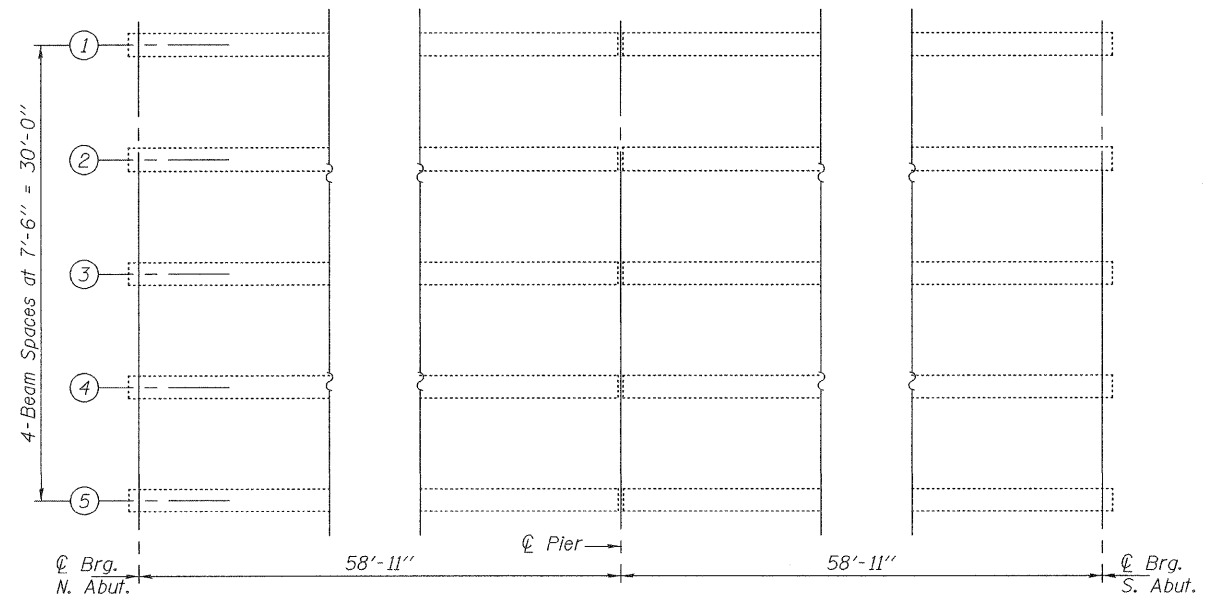
BACKWALL REPAIRS - NORTH ABUTMENT SN: 101-0032 (N.B.)
(Looking North)

- Structural Repair of Concrete ≤ 5 inches

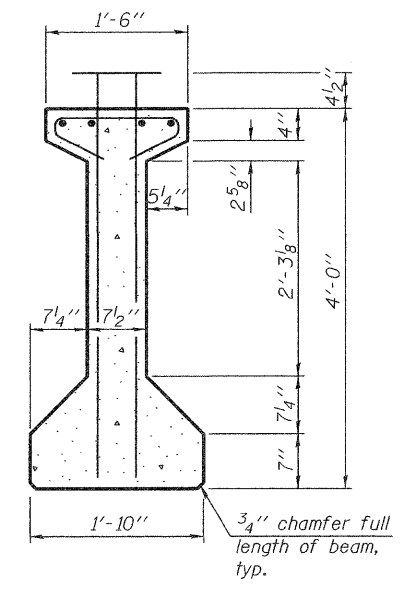


BACKWALL REPAIRS - SOUTH ABUTMENT SN: 101-0032 (N.B.)
(Looking South)

DESIGNED - IJL	EXAMINED - <i>Joanne F. Jelliffe</i>	DATE - MARCH 11, 2011	STATE OF ILLINOIS DEPARTMENT OF TRANSPORTATION	ABUTMENT BACKWALL REPAIR DETAILS SN 101-0032 (N.B.)	F.A.P. RTE. 738	SECTION (5HB)M1	COUNTY WINNEBAGO	TOTAL SHEETS 9	SHEET NO. 8
CHECKED - GGE	PASSED - <i>Carl King</i>				SHEET NO. 4 OF 5 SHEETS		CONTRACT NO. 64G89		
DRAWN - Kyle M. Steffen	ACTING ENGINEER OF STRUCTURAL SERVICES				ILLINOIS FED. AID PROJECT				
CHECKED - IJL GGE	ACTING ENGINEER OF BRIDGES AND STRUCTURES								

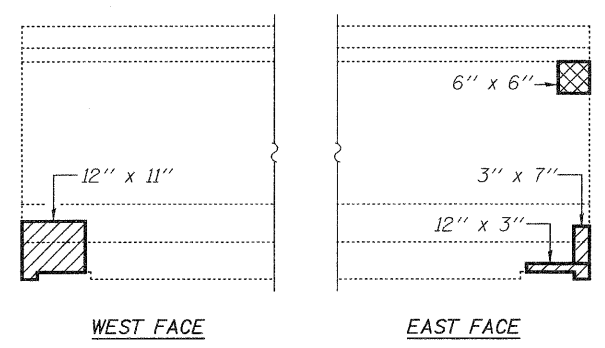
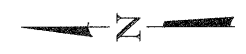


FRAMING PLAN - SN: 101-0032 (N.B.)

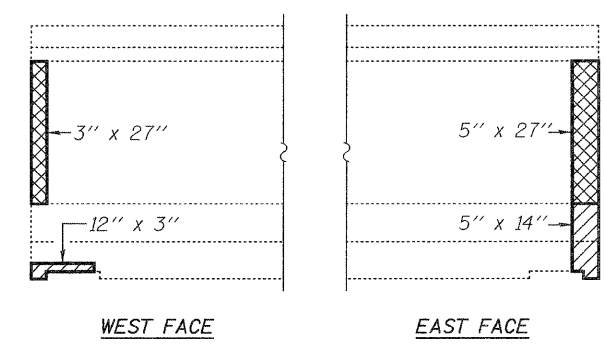


**BEAM DIMENSIONS
FOR INFORMATION ONLY**

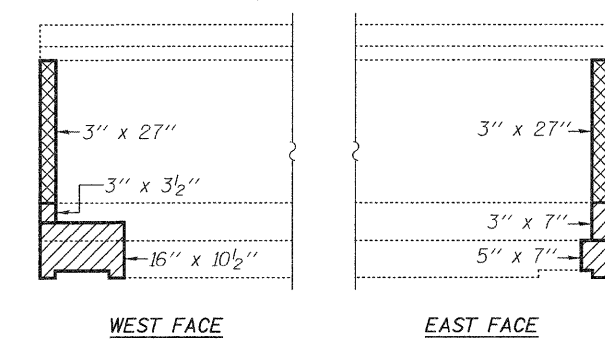
- Polymer Modified Portland Cement Mortar
- Structural Repair of Concrete ≤ 5 inches



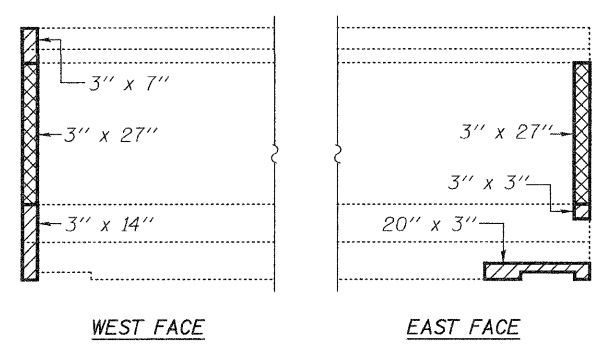
BEAM 1 - N. ABUT.



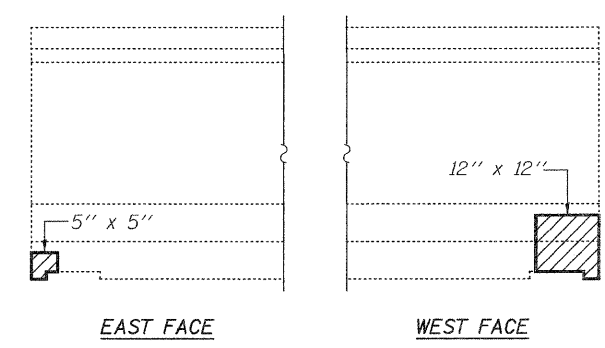
BEAM 3 - N. ABUT.



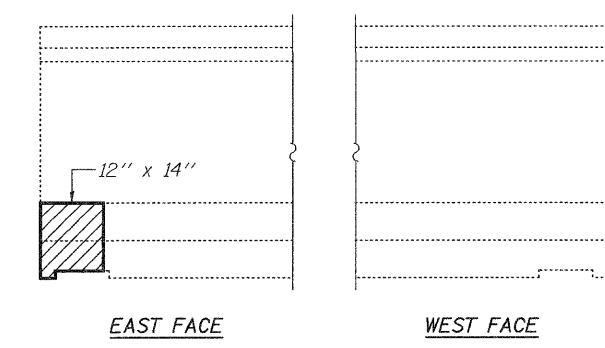
BEAM 4 - N. ABUT.



BEAM 5 - N. ABUT.



BEAM 1 - S. ABUT.



BEAM 5 - S. ABUT.

DESIGNED - IJL	EXAMINED - <i>Jayne F. Jelliffe</i> ACTING ENGINEER OF STRUCTURAL SERVICES	DATE - MARCH 11, 2011	STATE OF ILLINOIS DEPARTMENT OF TRANSPORTATION	P.P.C. I-BEAM END REPAIR DETAILS SN 101-0032 (N.B.)	F.A.P. RTE. 738	SECTION (5HB)M1	COUNTY WINNEBAGO	TOTAL SHEETS 9	SHEET NO. 9
CHECKED - GGE	PASSED - <i>Carl King</i> ACTING ENGINEER OF BRIDGES AND STRUCTURES								
DRAWN - Kyle M. Steffen									
CHECKED - IJL GGE									
				SHEET NO. 5 OF 5 SHEETS	ILLINOIS FED. AID PROJECT CONTRACT NO. 64G89				