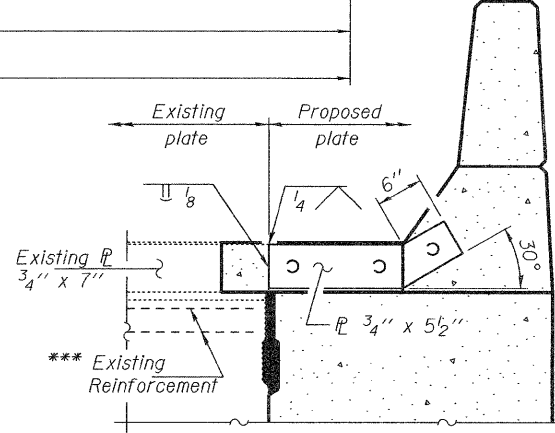


PARTIAL DECK PLAN

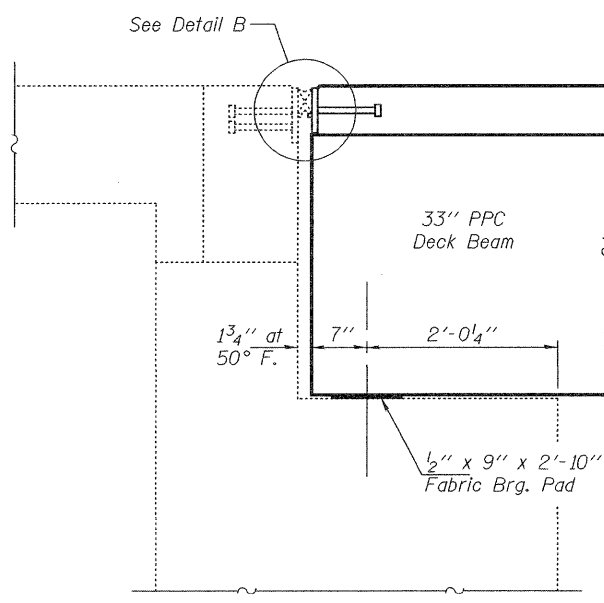
* Existing dowel rods are to be burned off, ground flush, and sealed with epoxy prior to placement of new beams. Cost included in Removal of Existing PPC Deck Beams. After beams have been erected holes shall be drilled into cap and dowel rods placed. Dowel holes shall be filled with non-shrink grout to top of beam and allowed to cure a minimum of 24 hours prior to grouting the shear keys.

** 1" Joint shall be filled with a non-shrink grout. Cost included with Concrete Superstructure.

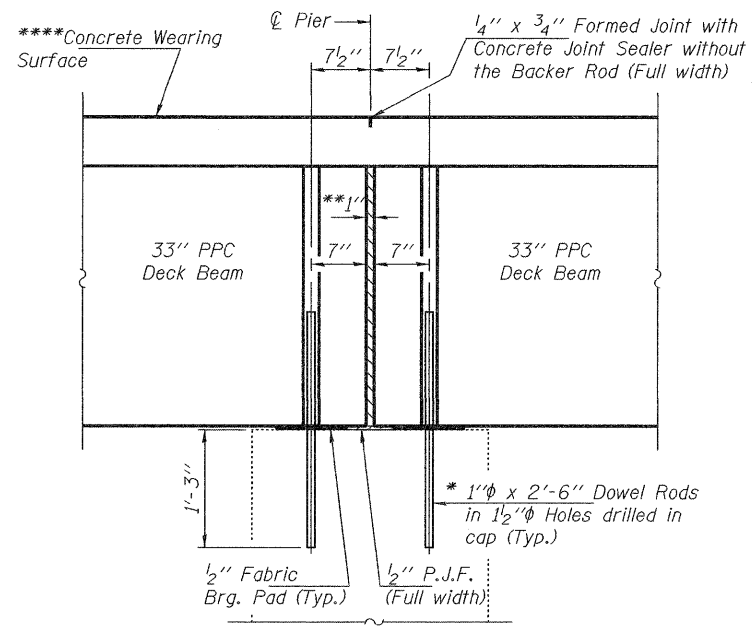
*** Existing transverse reinforcement extending to the new PPC Deck Beam at the abutments shall be cut.
 **** Cost included with Concrete Superstructure



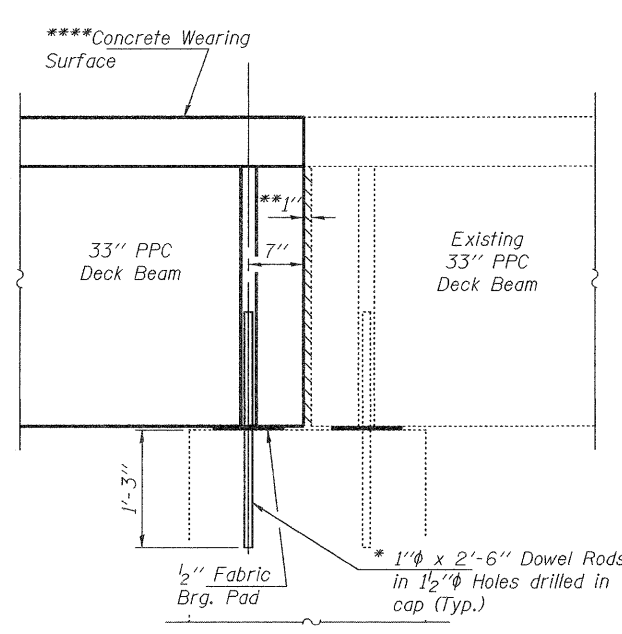
TYPICAL END TREATMENT OF PLATE AT PARAPET



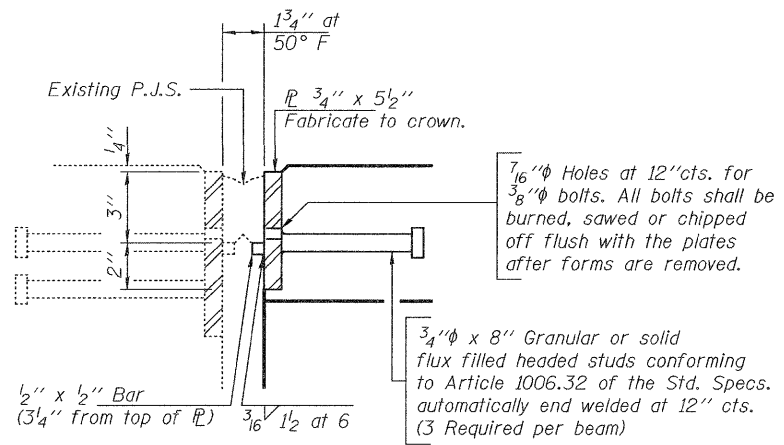
SECTION THRU ABUTMENTS



SECTION THRU PIER AT EAST FASCIA



SECTION THRU PIER AT WEST FASCIA



DETAIL B

Cost of Plates & Studs included with Concrete Superstructure

DESIGNED	I.J.L.	EXAMINED	<i>Joanne F. Duff</i>	DATE	MARCH 11, 2011
CHECKED	G.G.E.	PASSED	<i>Carl Long</i>		
DRAWN	Kyle M. Steffen				
CHECKED	I.J.L. G.G.E.				

**STATE OF ILLINOIS
DEPARTMENT OF TRANSPORTATION**

**REPAIR DETAILS
SN 043-0040**

SHEET NO. 5 OF 6 SHEETS

F.A.P. RTE.	SECTION	COUNTY	TOTAL SHEETS	SHEET NO.
642	10BR-3M	JO DAVIESS	12	11
CONTRACT NO. 64E90				
ILLINOIS FED. AID PROJECT				