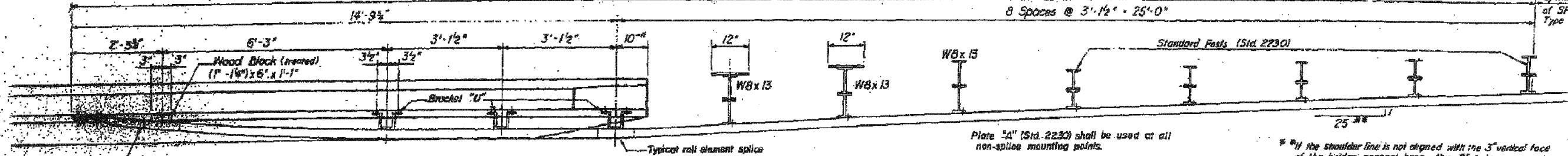


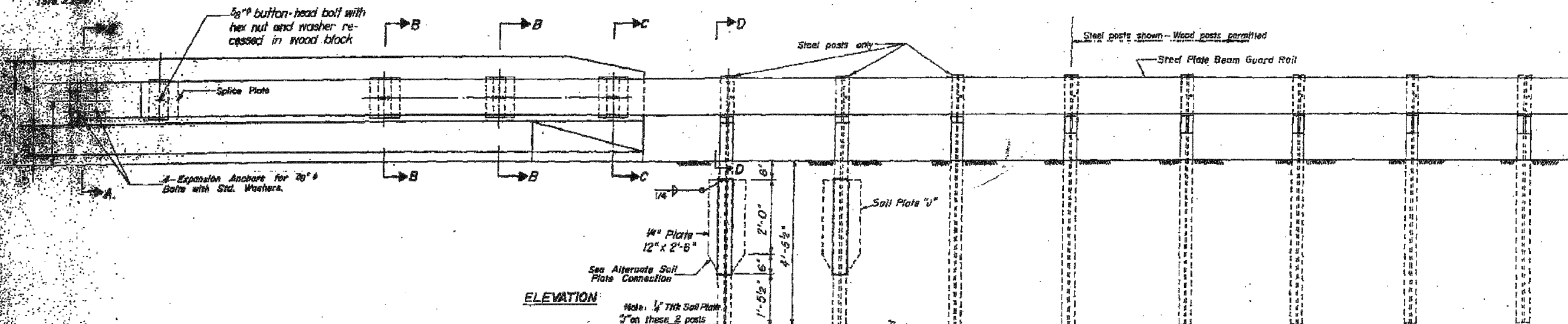
Pay limits of Traffic Barrier Terminal Type 6. (1 Each)

8 Spaces @ 3'-1 1/2" = 25'-0"

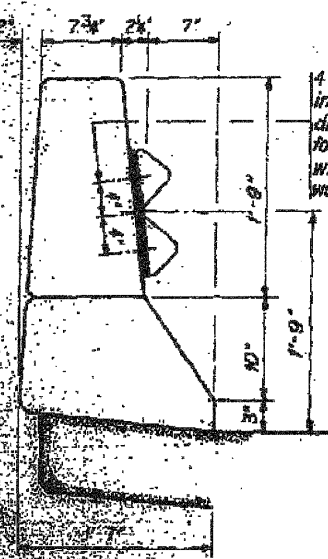
Pay limits of SPBR Type 4



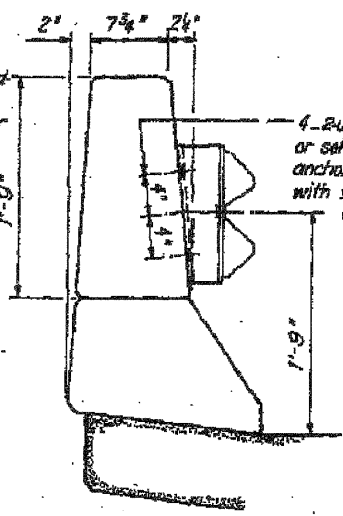
PLAN



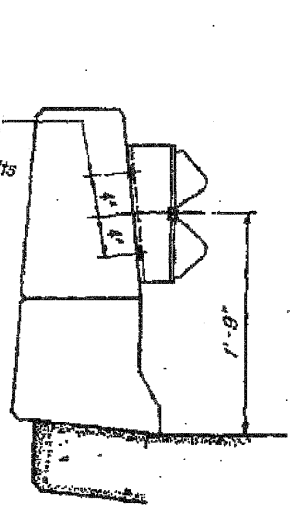
ELEVATION



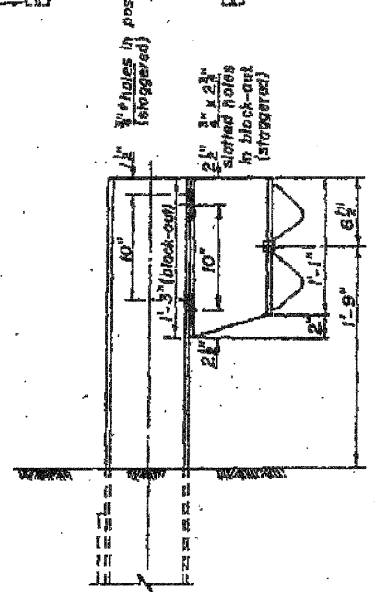
SECTION A-A



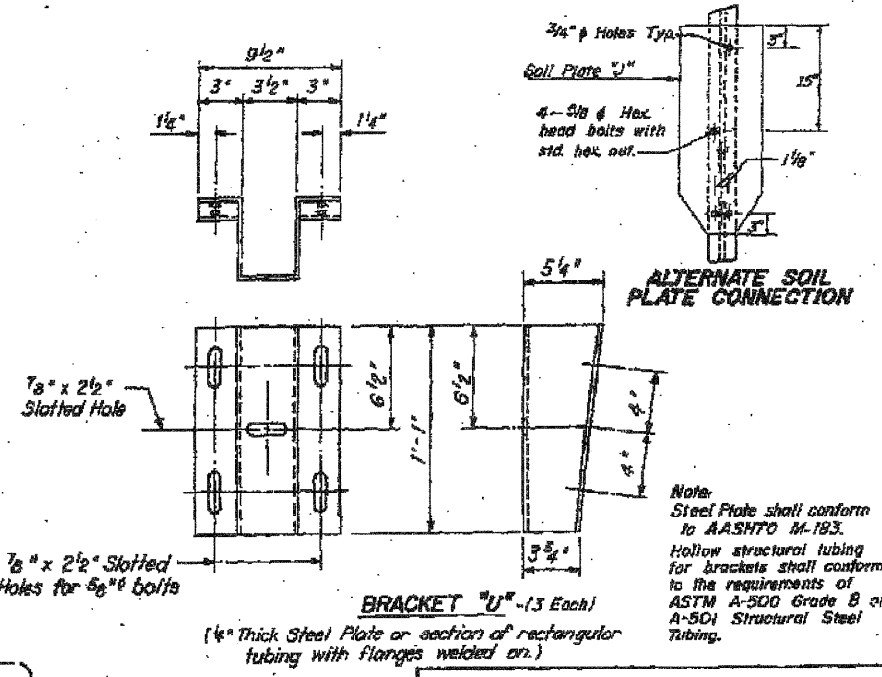
SECTION B-B



SECTION C-C



SECTION D-D



BRACKET 'U' - (3 Each)

ALTERNATE SOIL PLATE CONNECTION

GENERAL NOTES:
 For details of guardrail not shown see Standard 2250
 When a bridge expansion joint exists between the End Shoe and the first post, all splice bolts at the End Shoe and post bolts at the brackets shall be fitted with a locknut or double nuts tightened only to a point that will allow guardrail movement.

FOR INFORMATION ONLY

**TRAFFIC BARRIER
 TERMINAL TYPE 6
 STANDARD 2341-1**
 (Full Size)

E-3300

DESIGNED I.J.L.	EXAMINED Joanne F. Jelliff ACTING ENGINEER OF STRUCTURAL SERVICES	DATE MARCH 11, 2011	STATE OF ILLINOIS DEPARTMENT OF TRANSPORTATION		TRAFFIC BARRIER TERMINAL DETAILS (FOR INFORMATION ONLY) SN 043-0040		F.A.P. RTE. 642	SECTION 10BR-3M	COUNTY JO DAVIESS	TOTAL SHEETS 12	SHEET NO. 11A
CHECKED G.G.E.	PASSED Carl Perry ACTING ENGINEER OF BRIDGES AND STRUCTURES		STATE OF ILLINOIS DEPARTMENT OF TRANSPORTATION		TRAFFIC BARRIER TERMINAL DETAILS (FOR INFORMATION ONLY) SN 043-0040					CONTRACT NO. 64E90	
DRAWN Kyle M. Steffen			STATE OF ILLINOIS DEPARTMENT OF TRANSPORTATION		TRAFFIC BARRIER TERMINAL DETAILS (FOR INFORMATION ONLY) SN 043-0040					ILLINOIS FED. AID PROJECT	
CHECKED I.J.L. G.G.E.			STATE OF ILLINOIS DEPARTMENT OF TRANSPORTATION		TRAFFIC BARRIER TERMINAL DETAILS (FOR INFORMATION ONLY) SN 043-0040		SHEET NO. 6 OF 6 SHEETS				