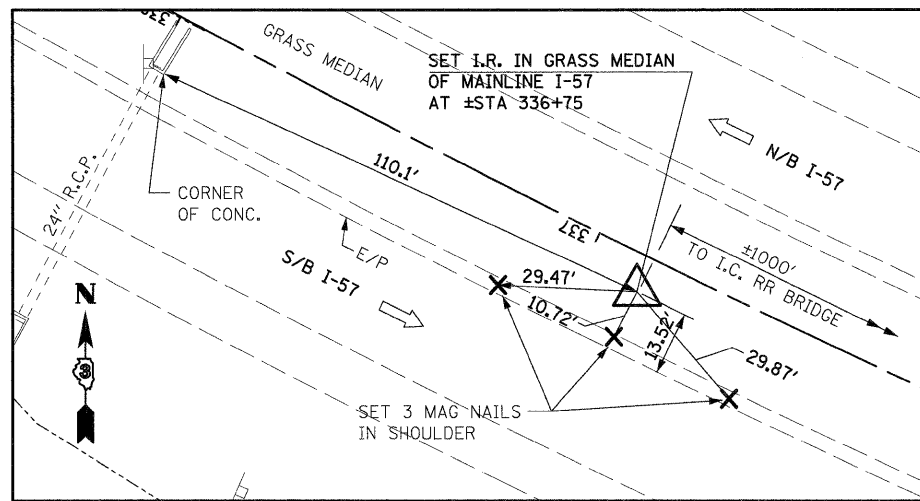
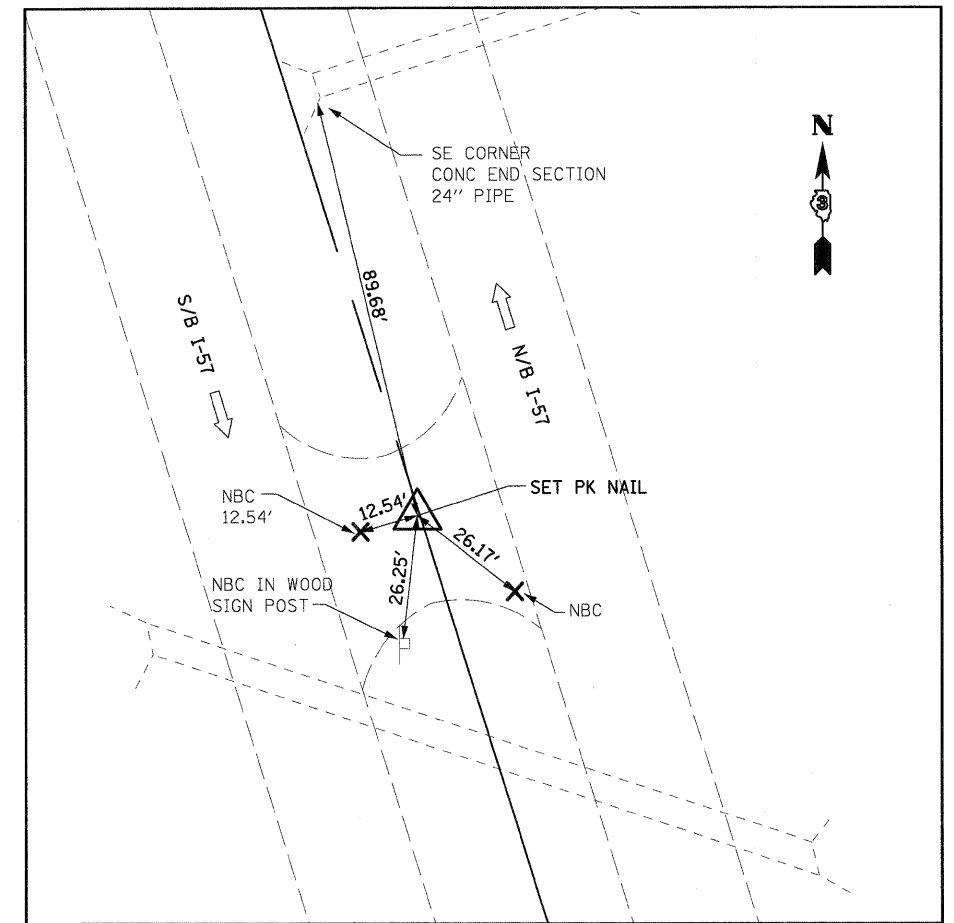


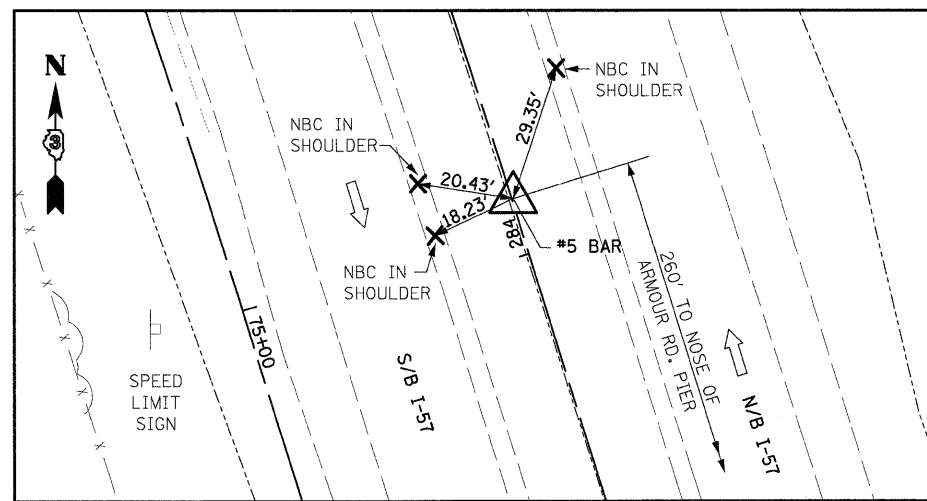
ASC #27 NORTHING : 1640544.909 STA 332+70.11 (I-57)
 EASTING : 1114922.478 OFFSET 3.41' RT
 ELEVATION : 702.88



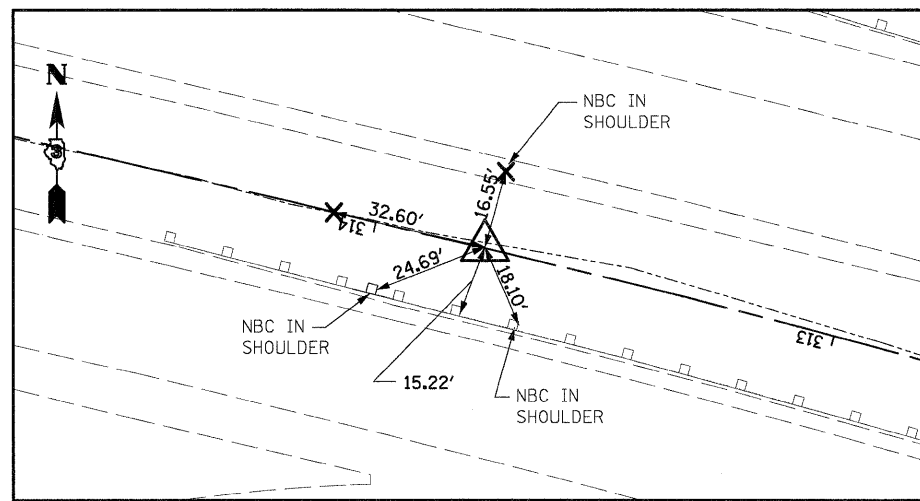
ASC #28 NORTHING : 1640690.791 STA 336+87.45 (I-57)
 EASTING : 1114531.369 OFFSET 7.65' LT
 ELEVATION : 701.16



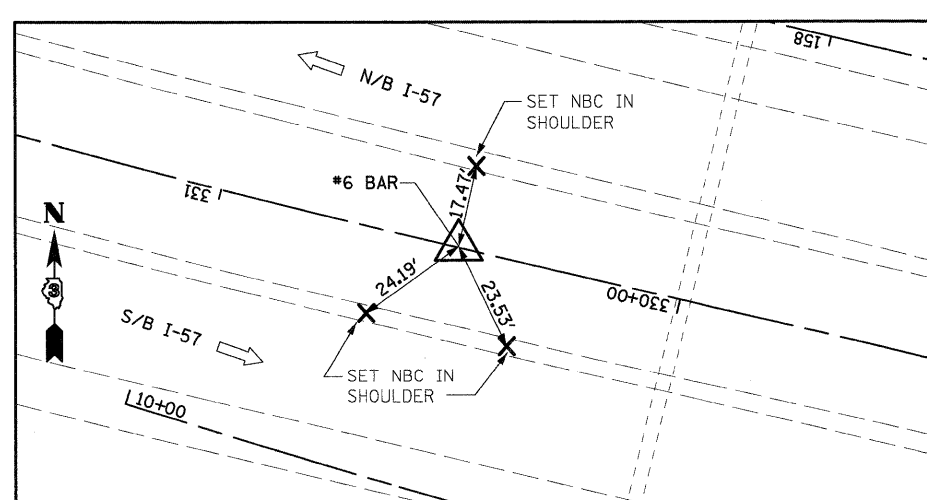
ASC #24208 NORTHING : 1634151.375 STA 242+08.56 BK =
 EASTING : 1120086.207 STA 242+09.83 AHD
 ELEVATION : 647.96



ASC #28412 NORTHING : 1638162.746 STA 284+12.05 (I-57)
 EASTING : 1118834.181 OFFSET 0.29' RT
 ELEVATION : 669.33



ASC #31376 NORTHING : 1640095.919 STA 313+76.30 (I-57)
 EASTING : 1116761.829 OFFSET 0.25' RT
 ELEVATION : 708.16



ASC #33048 NORTHING : 1640482.354 STA 330+48.24 (I-57)
 EASTING : 1115135.160 OFFSET 0.26' RT
 ELEVATION : 703.52

BENCHMARKS

BM #	ELEV.	DESCRIPTION
BM 278	664.080	CHISELED "□" W. SIDE OF W. LEG "EXIT 315 - 1/2 MILE" SIGN FOUNDATION, STA. 278+38, 79' RT.
BM 282	669.073	CHISELED "□" CENTER OF SLOPED HEADWALL WITH GRATE, STA. 282+50, 60' RT.
BM 284	668.957	REBAR, STA. 284+17, C I-57
BM 288	671.184	CHISELED "□" CENTER OF SLOPED HEADWALL WITH GRATE, STA. 288+00, 63' RT.
BM 298	680.446	CHISELED "X" N.W. BOLT OF LIGHT POLE FOUND. #36-7, STA. 298+02, 62' RT.
BM 303	681.484	CHISELED "□" CENTER OF CONCRETE HEADWALL, EXIT 315 N.B. EXIT RAMP, STA. 303+09, 102' RT.
BM 308	702.355	SPIKE IN 2ND WOOD GUARDRAIL POST FROM IL 50, STA. 308+48, 14' RT.
BM 312	711.652	CHISELED "□" IN N.E. WINGWALL OF S.N. 0015, STA. 312+42, 68' RT.

BENCHMARKS

BM #	ELEV.	DESCRIPTION
BM 317	708.173	CHISELED "□" CENTER UNDERDRAIN HEADWALL, STA. 318+10, 62' RT.
BM 325	709.491	CHISELED "□" S.E. WINGWALL BRIDGE S.N. 0017, STA. 325+09, 65' RT.
BM 331	703.640	REBAR, STA. 330+58, C I-57
BM 338	701.830	CHISELED "□" S.W. CORNER INLET BOX, STA. 337+94, 12.5' LT.
BM 344	700.965	TOP R.O.W. MARKER, STA. 343+94, 100' RT.
BM 349	697.318	CHISELED "□" N.W. CORNER INLET BOX, STA. 348+96, 15' LT.
BM 358	695.064	CHISELED "□" S. END OF CONCRETE HEADWALL, STA. 357+04, 80' RT.
BM 362	696.490	CHISELED "□" N.W. CORNER INLET BOX, STA. 362+30, 16' LT.
BM 367	697.555	CHISELED "□" CENTER CONCRETE HEADWALL AT S.N. 0087, STA. 367+01, 80.5' RT.
BM 377	697.267	CHISELED "□" N.W. CORNER INLET BOX, STA. 376+97, 18' LT.
BM 382	696.292	REBAR, STA. 382+55, C I-57

FILE NAME = I:\Dgn\sheets\tb025.dgn

USER NAME = Eriog
 PLOT SCALE = 1:20
 PLOT DATE = 12/22/2010

DESIGNED - JTF
 DRAWN - JTF
 CHECKED - EJG
 DATE - 12/17/10

REVISED -
 REVISED -
 REVISED -
 REVISED -

**STATE OF ILLINOIS
 DEPARTMENT OF TRANSPORTATION**

ALIGNMENT, TIES AND BENCHMARKS

SCALE: SHEET NO. OF SHEETS STA. TO STA.

F.A.I. RTE. 57 SECTION (46-2) I, HBR, VBR COUNTY KANKAKEE TOTAL SHEETS 558 SHEET NO. 42 CONTRACT NO. 66409 FED. ROAD DIST. NO. 3 ILLINOIS FED. AID PROJECT