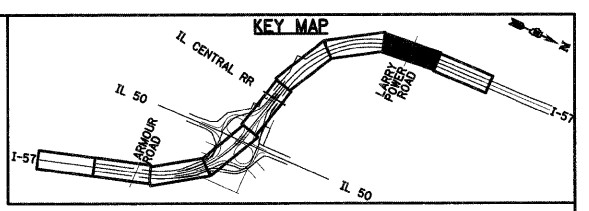
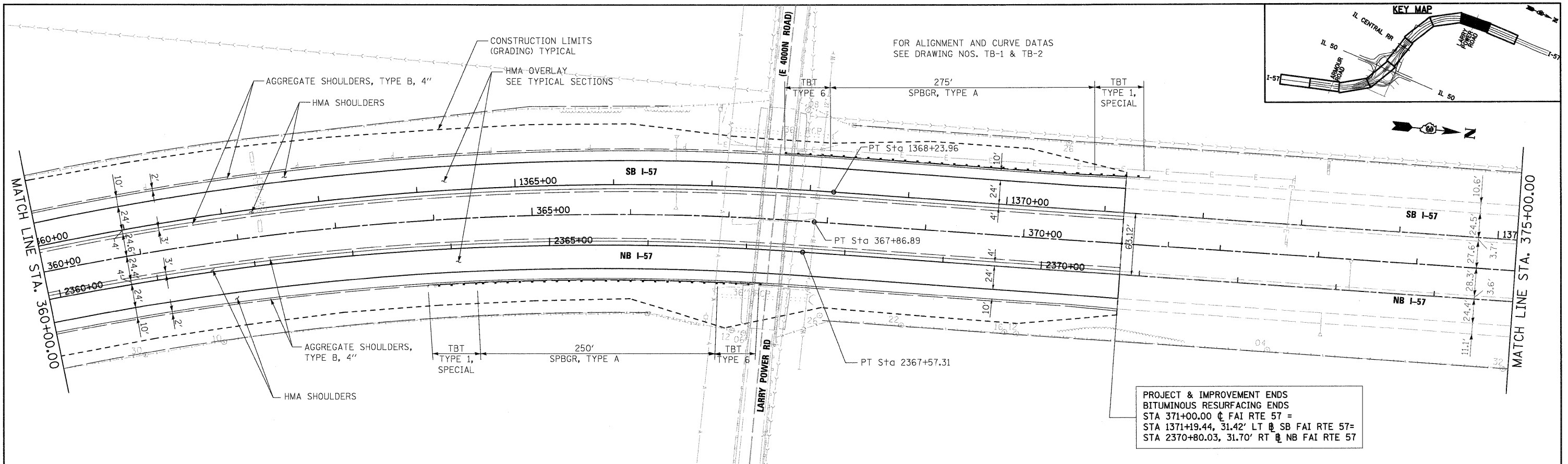
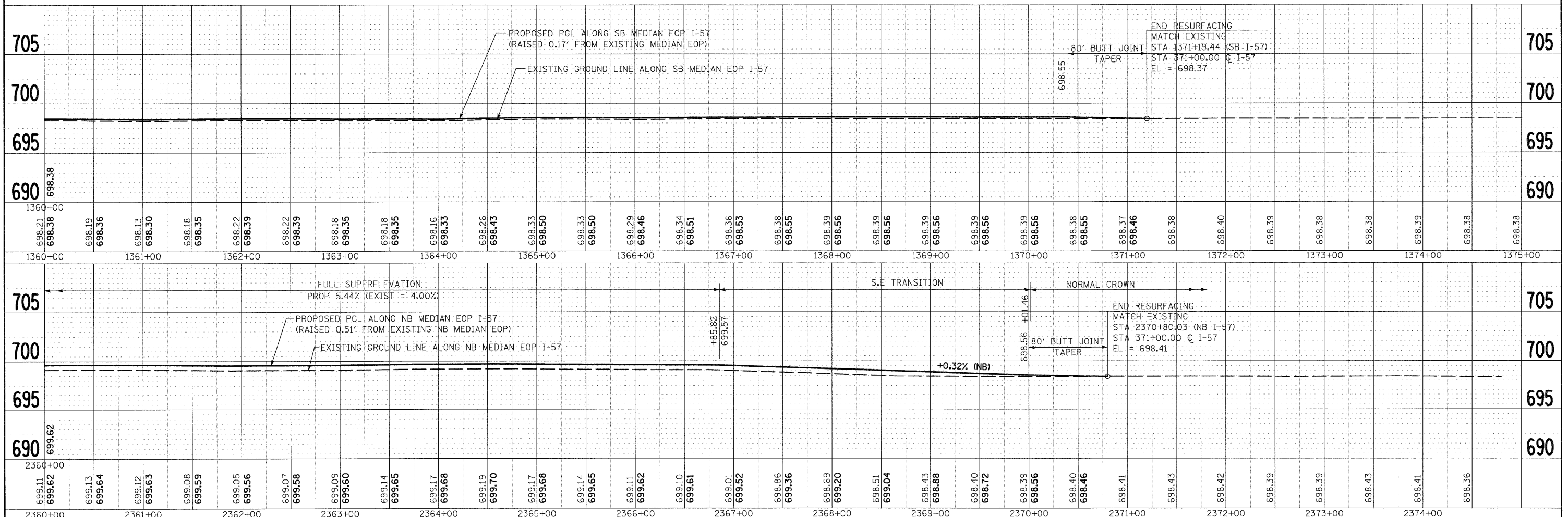


PLAN	REVISIONS	DATE
NO.		
CADD FILE NAME		
CHECKED		
ALIGNED		
PLOTTED		
BY		

PROFILE	REVISIONS	DATE
NO.		
NOTED		
CHECKED		
PLOTTED		
BY		



PROJECT & IMPROVEMENT ENDS
 BITUMINOUS RESURFACING ENDS
 STA 371+00.00 @ FAI RTE 57 =
 STA 1371+19.44, 31.42' LT @ SB FAI RTE 57=
 STA 2370+80.03, 31.70' RT @ NB FAI RTE 57



FILE NAME = I:\Dgn\sheet\p0808.dgn	USER NAME = EricG	DESIGNED - JTF	REVISED -	STATE OF ILLINOIS DEPARTMENT OF TRANSPORTATION	I-57 PROPOSED PLAN AND PROFILE			F.A.I. RTE.	SECTION	COUNTY	TOTAL SHEETS	SHEET NO.			
PLOT SCALE = 1:50	DRAWN - EJG	CHECKED - JTF	REVISED -		SCALE:	SHEET NO.	OF	SHEETS	STA.	TO STA.	57	(46-2) I, HBR, VBR	KANKAKEE	558	58
PLOT DATE = 12/22/2010	CHECKED - 12/17/10	REVISED -	REVISED -		FED. ROAD DIST. NO. 3	ILLINOIS FED. AID PROJECT									
											CONTRACT NO. 66409				