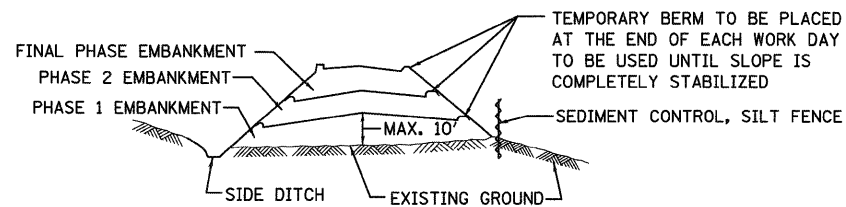


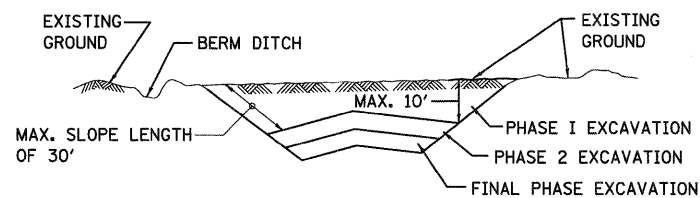
**EMBANKMENT PHASING PLAN-FILL SECTION**



**NOTES:**

1. THE EMBANKMENT WILL BE MADE IN STAGES NOT TO EXCEED 10'. THE EMBANKMENT SLOPES WILL BE STABILIZED USING TEMPORARY MEASURES BEFORE BEGINNING NEXT STAGE.
- 2.(A) AT THE END OF EACH WORK DAY TEMPORARY BERMS (EARTH) AND TEMPORARY PIPE SLOPE DRAINS WILL BE CONSTRUCTED ALONG THE TOP EDGE(S) OF THE EMBANKMENT TO INTERCEPT SURFACE RUNOFF.
- 2.(B) IN LIEU OF PERFORMING WORK DESCRIBED IN 2(A) AT THE END OF EACH WORK DAY, THE CONTRACTOR MAY EMPLOY A "CERTIFIED CONSULTANT METEOROLOGIST" TO PROVIDE A WRITTEN DAILY WEATHER FORECAST TO THE DEPARTMENT'S ENGINEER. SHOULD THE FORECAST PREDICT A 10% (OR LESS) CHANCE OF PRECIPITATION IN THE NEXT 36 HOUR TIME PERIOD, THE BERMS AND SLOPE DRAINS NEED NOT BE DONE THAT DAY. ON WORK DAYS PRECEDING NON-WORK DAYS, THE FORECAST MUST EXTEND TO THE SCHEDULED RESUMPTION OF WORK.
3. CONSTRUCTION SEQUENCE FOR EMBANKMENT
  - (A) EXCAVATE AND STABILIZE SIDE DITCH AND/OR INSTALL PROPOSED PERIMETER CONTROLS AT THE TOE OF SLOPE.
  - (B) PLACE PHASE 1 EMBANKMENT AND STABILIZE WITH TEMPORARY SEEDING AND MULCH.
  - (C) PLACE PHASE 2 EMBANKMENT AND STABILIZE WITH TEMPORARY SEEDING AND MULCH.
  - (D) PLACE FINAL PHASE EMBANKMENT AND STABILIZE WITH PERMANENT VEGETATIVE PLAN ON THE ENTIRE SLOPE.
4. ONCE THE PLACEMENT OF FILL WITHIN A SPECIFIC AREA HAS BEGUN, THE OPERATION SHALL BE CONTINUOUS FROM STRIPPING THROUGH THE COMPLETION OF THE GRADING AND PLACEMENT OF PERMANENT VEGETATIVE PLAN. ANY INTERRUPTIONS IN THE OPERATION OF 14 DAYS OR MORE MUST BE APPROVED BY THE ENGINEER. ANY VIOLATION OF THIS REQUIREMENT WILL RESULT IN THE CONTRACTOR ASSUMING THE RESPONSIBILITY OF PLACING TEMPORARY STABILIZATION AT HIS OWN COST AND EXPENSE AS DIRECTED BY THE ENGINEER.

**EXCAVATION PHASING PLAN-CUT SECTION**



**NOTES:**

1. ALL CUT SLOPES SHALL BE EXCAVATED AND STABILIZED (PLACE TOPSOIL, PREPARE SEEDBED, APPLY SEED, PROTECT SLOPE WITH MULCH OR EROSION BLANKET) AS THE WORK PROGRESSES.
2. CONSTRUCTION SEQUENCE FOR EXCAVATION:
  - (A) EXCAVATE AND STABILIZE BERM, SIDE AND OUTLET DITCHES, PROVIDE SEDIMENT TRAPS FOR DITCHES.
  - (B) PERFORM PHASE 1 EXCAVATION AND STABILIZE SLOPES WITH PERMANENT SEEDING.
  - (C) PERFORM PHASE 2 EXCAVATION AND STABILIZE SLOPES WITH PERMANENT SEEDING. OVERSEED PHASE 1 SLOPES, IF REQUIRED.
  - (D) PERFORM FINAL PHASE EXCAVATION, AND STABILIZE WITH PERMANENT VEGETATIVE PLAN ON THE ENTIRE SLOPE. STABILIZE SURFACE DRAIN DITCHES. OVERSEED PHASE 1 & 2 SLOPES, IF REQUIRED, AS DETERMINED BY THE ENGINEER.
3. IF PERMANENT SEEDING CANNOT BE PLACED DUE TO CONTRACT REQUIREMENTS REGARDING PLANTING SEASONS, THE CUT SLOPE IS TO HAVE TOPSOIL PLACED AND SEEDBED PREPARED PRIOR TO USING TEMPORARY STABILIZATION WITH STRAW MULCH OR TEMPORARY SEEDING WITH EROSION BLANKET.
4. THE CONTRACTOR HAS THE OPTION OF DELAYING TOPSOIL AND/OR SEEDING BEYOND THE 10 FOOT VERTICAL LIMITATION. (SEE GENERAL NOTE 9) IF SO THE CUT SLOPE MUST BE TEMPORARILY STABILIZED AT NO COST TO THE DEPARTMENT.
5. ONCE THE EXCAVATION WITHIN A SPECIFIC AREA HAS BEGUN, THE OPERATION SHALL BE CONTINUOUS FROM STRIPPING THROUGH THE COMPLETION OF THE GRADING AND PLACEMENT OF SLOPE STABILIZATION MEASURES. ANY INTERRUPTIONS IN THE OPERATION 14 DAYS OR MORE MUST BE APPROVED BY THE ENGINEER. ANY VIOLATIONS OF THIS REQUIREMENT WILL RESULT IN THE CONTRACTOR ASSUMING THE RESPONSIBILITY OF PLACING TEMPORARY STABILIZATION AT HIS OWN COST AND EXPENSE AS DIRECTED BY THE ENGINEER.

**EROSION AND SEDIMENT CONTROL LEGEND**

- TEMPORARY FENCE
- PERIMETER EROSION BARRIER
- TP TREE TRUNK PROTECTION
- ◇ TEMPORARY DITCH CHECKS
- IF INLET FILTERS
- ◇ INLET AND PIPE PROTECTION
- SEDIMENT BASIN
- STONE OUTLET STRUCTURE SEDIMENT TRAP
- EROSION CONTROL BLANKET WITH SEEDING, CLASS 2A
- SEEDING, CLASS 4A
- SODDING, SALT TOLERANT
- DITCH FLOW

**EROSION AND SEDIMENT CONTROL STRATEGY**

RECEIVING WATERS: SOLDIER CREEK

1. ERECT PERIMETER EROSION BARRIER AS SHOWN ON THE PLANS.
2. CLEAR AND GRUB. REMOVE EXISTING TREES AS NECESSARY.
3. CONSTRUCT STORM SEWER AND DETENTION PONDS ERECT INLET PROTECTION AS SHOWN.
4. ESTABLISH PROPOSED DITCHES, STABILIZE WITH SEEDING OR SODDING, AND INSTALL TEMPORARY DITCH CHECKS AT 18" VERTICAL INTERVALS
5. WHEN FINAL STABILIZATION IS ESTABLISHED, REMOVE INLET PROTECTION AND TEMPORARY DITCH CHECKS.

FILE NAME = I:\0gn\sheet\ec01.dgn	USER NAME = EricG	DESIGNED - JWM	REVISED -	<b>STATE OF ILLINOIS DEPARTMENT OF TRANSPORTATION</b>	<b>LANDSCAPING AND EROSION AND SEDIMENT CONTROL LEGEND, STRATEGY AND SECTIONS</b>	F.A.I. RTE.	SECTION	COUNTY	TOTAL SHEETS	SHEET NO.
PLOT SCALE = 1:50	DRAWN - JWM	REVISED -	57			(46-2) I, HBR, VBR	KANKAKEE	558	122	
PLOT DATE = 12/22/2010	CHECKED - EUG	REVISED -	CONTRACT NO. 66409							
DATE - 12/17/10	DATE - 12/17/10	REVISED -	FED. ROAD DIST. NO. 3 ILLINOIS FED. AID PROJECT							
SCALE:		SHEET NO.	OF SHEETS	STA.	TO STA.					