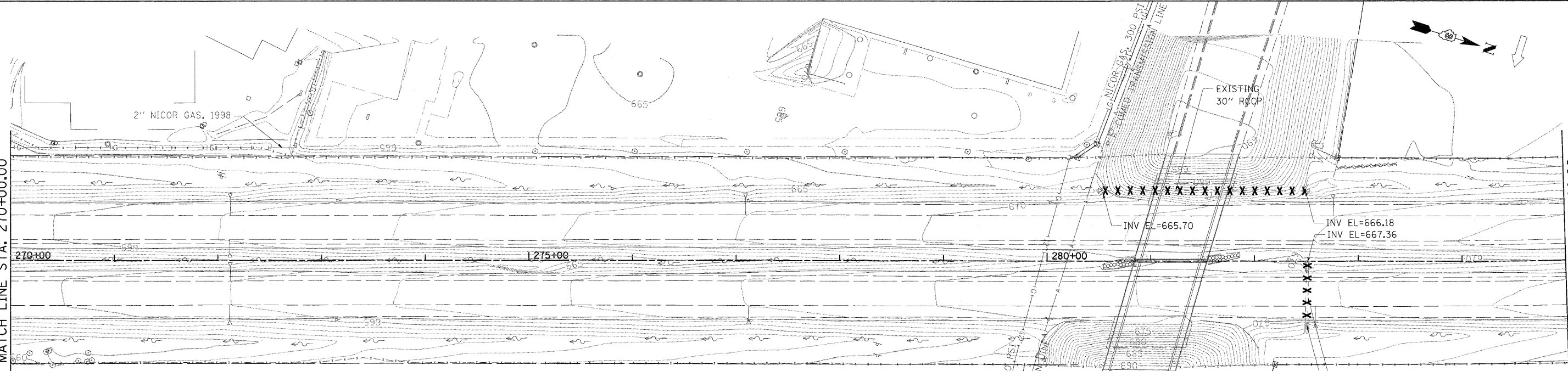


EXISTING DRAINAGE LEGEND

- [R] DRAINAGE STRUCTURE REMOVAL
 - [F] DRAINAGE STRUCTURE TO BE FILLED
 - XXX DRAINAGE PIPE OR PAVED DITCH REMOVAL
- NOTE: REMOVAL OF EXISTING END SECTIONS AND CONCRETE HEADWALLS SHALL NOT BE MEASURE FOR PAYMENT, BUT SHALL BE CONSIDERED INCIDENTAL TO THE COST OF REM. OF STORM SEWERS & CULVERTS.



DRAINAGE REMOVALS

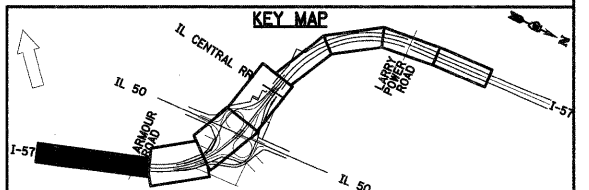
EXISTING DRAINAGE LEGEND

- [R] DRAINAGE STRUCTURE REMOVAL
- [F] DRAINAGE STRUCTURE TO BE FILLED
- XXX DRAINAGE PIPE OR PAVED DITCH REMOVAL

STORM SEWER REMOVAL 24"					TRENCH BACKFILL	
FROM STATION	TO STATION	OFFSET	QUANTITY FOOT	QUANTITY CU YD	QUANTITY	QUANTITY
282+50.3	282+51.1	61.4 RT	50.8	6.0		
			TOTAL	50.8	6.0	

STORM SEWER REMOVAL 30"					TRENCH BACKFILL	
FROM STATION	TO STATION	OFFSET	QUANTITY FOOT	QUANTITY CU YD	QUANTITY	QUANTITY
280+53.2	282+49.0	68.4 LT	195.8	N/A		
			TOTAL	195.8	N/A	

NOTE: REMOVAL OF EXISTING END SECTIONS AND CONCRETE HEADWALLS SHALL NOT BE MEASURE FOR PAYMENT, BUT SHALL BE CONSIDERED INCIDENTAL TO THE COST OF REM. OF STORM SEWERS & CULVERTS.



FILE NAME = 3:\0gn\sheet\du01.dgn	USER NAME = EricG	DESIGNED - JWM	REVISED -	STATE OF ILLINOIS DEPARTMENT OF TRANSPORTATION	EXISTING DRAINAGE AND UTILITY PLAN				F.A.I. RTE. 57	SECTION (46-2) I, HBR, VBR	COUNTY KANKAKEE	TOTAL SHEETS 558	SHEET NO. 133
	PLOT SCALE = 1:50	CHECKED - EJG	REVISED -		SCALE:	SHEET NO.	OF SHEETS	STA.	TO STA.	CONTRACT NO. 66409			
	PLOT DATE = 12/22/2010	DATE - 12/17/10	REVISED -		FED. ROAD DIST. NO. 3 ILLINOIS FED. AID PROJECT								