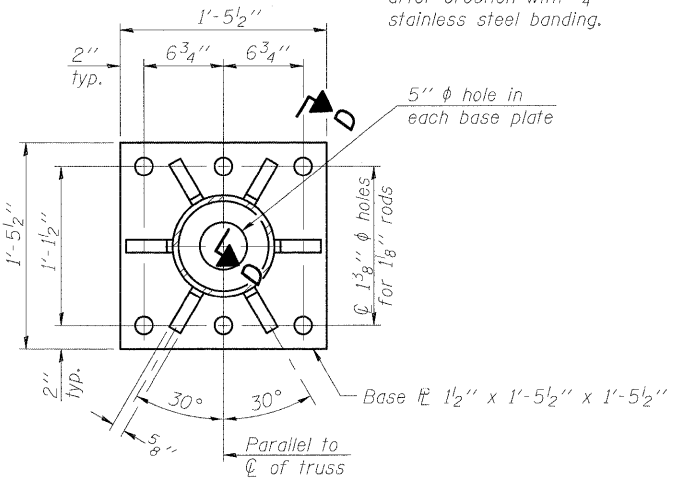


DETAIL B

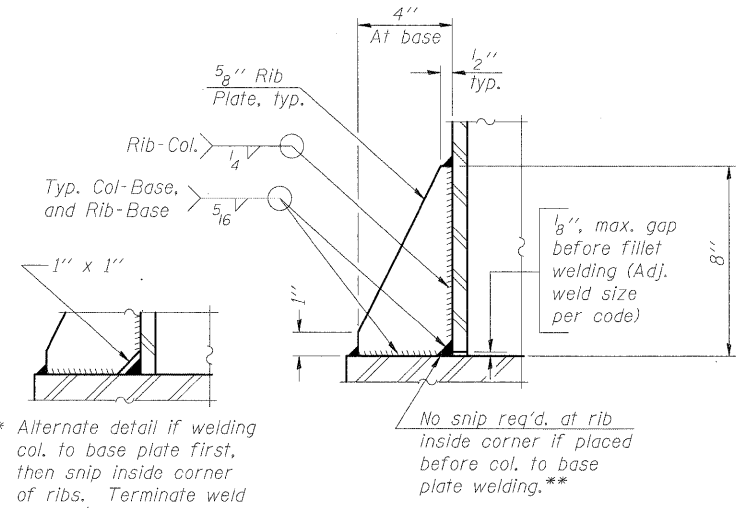
Hexagon locknut and washer (top), leveling nut and washer (bottom). Galvanize per AASHTO M232. Nuts shall each be tightened against base plate with 200 lb.-ft. minimum torque.

Ribs shall be cut to fit slope of pipe.

Stainless Steel Standard Grade Wire Cloth, 3" wide, 1/4" maximum opening with a minimum wire diameter of AWG. No. 16 with a minimum 2" lap. Secure to base plate after erection with 3/4" stainless steel banding.



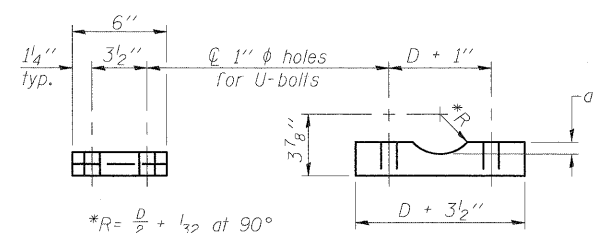
SECTION B-B



SECTION D-D

** Alternate detail if welding col. to base plate first, then snip inside corner of ribs. Terminate weld on rib 1/4" from snip.

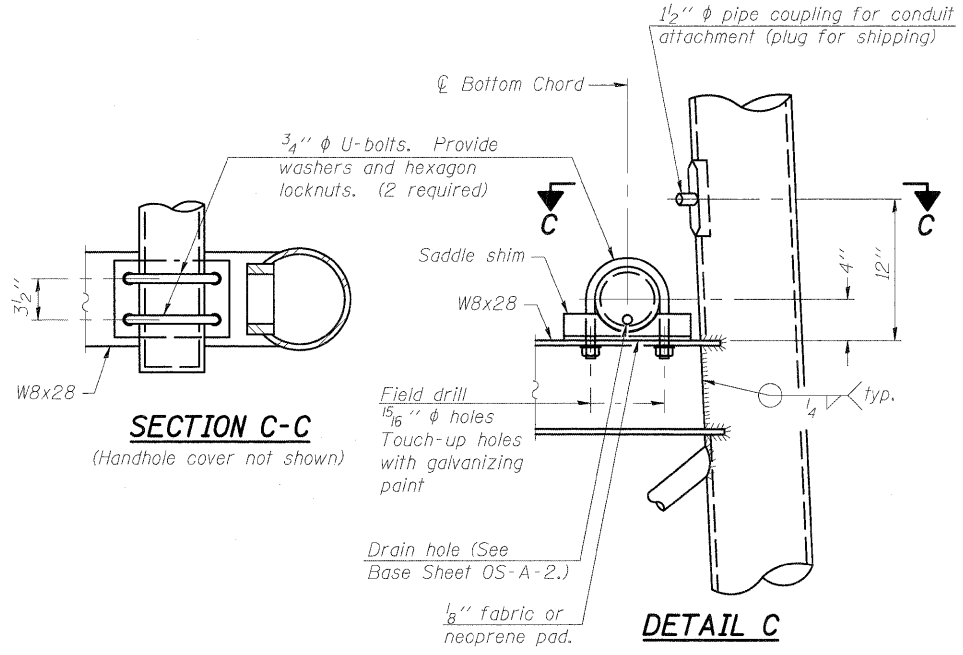
No snip req'd. at rib inside corner if placed before col. to base plate welding.



SADDLE SHIM DETAIL

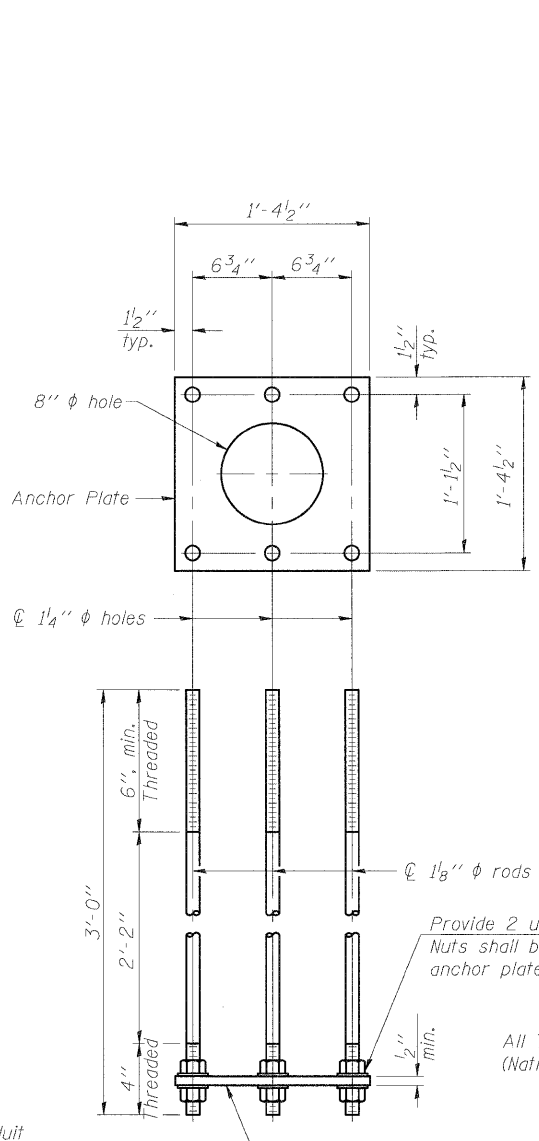
ASTM B26 Alloy 356-F or ASTM B209 Alloy 6061-T651 (4 required per sign truss)

Truss Chord Nominal Dia.	a
5"	3/4"
5 1/2"	13/16"
6"	7/8"
6 1/2"	15/16"

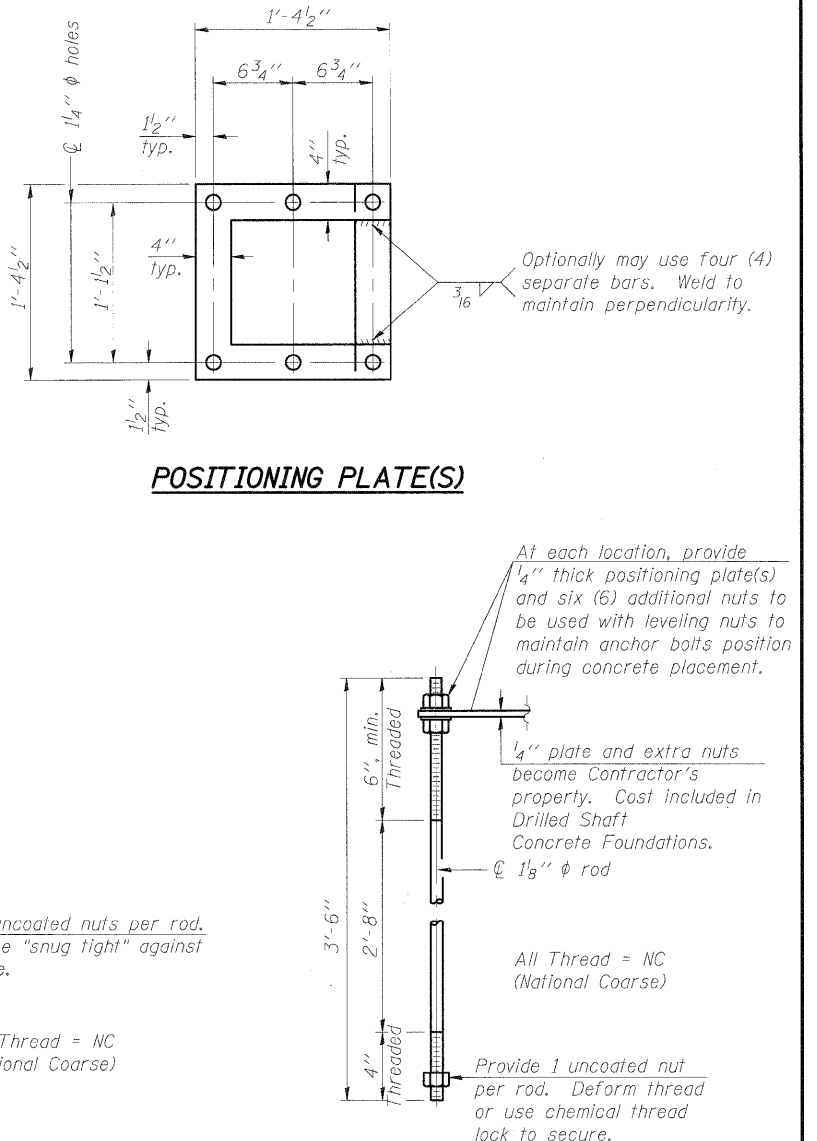


SECTION C-C

DETAIL C



ANCHOR ROD DETAIL
Spread Footing Foundation



ANCHOR ROD DETAIL
Drilled Shaft Foundation

Anchor rods shall conform to AASHTO M314 Grade 36 or 55 and meet Charpy V-Notch (CVN) energy of 15 lb.-ft. at 40° F. Galvanize upper 12" per AASHTO M232. No welding shall be permitted on rods.

TYPE I-A TRUSS
8" φ PIPE SUPPORT FRAME DETAILS

OS-A-4A

7-1-10

FILE NAME = H:\07031\Struct\dgn\shc\1L 50-S128.dgn	USER NAME = EricG
PLOT SCALE = 1:8.0933333	PLOT DATE = 12/22/2010

DESIGNED - MGB	REVISIONS -
CHECKED - BB	REVISIONS -
DRAWN - MGB	REVISIONS -
CHECKED - BB	REVISIONS -

STATE OF ILLINOIS
DEPARTMENT OF TRANSPORTATION

OVERHEAD SIGN STRUCTURES
SUPPORT FRAME DETAILS - ALUMINUM TRUSS
SHEET NO. 6 OF 10 SHEETS

F.A.I. RTE. 57	SECTION (46-2) I, HBR, VBR	COUNTY KANKAKEE	TOTAL SHEETS 558	SHEET NO. 221
CONTRACT NO. 66409			FED. ROAD DIST. NO. 3 ILLINOIS FED. AID PROJECT	